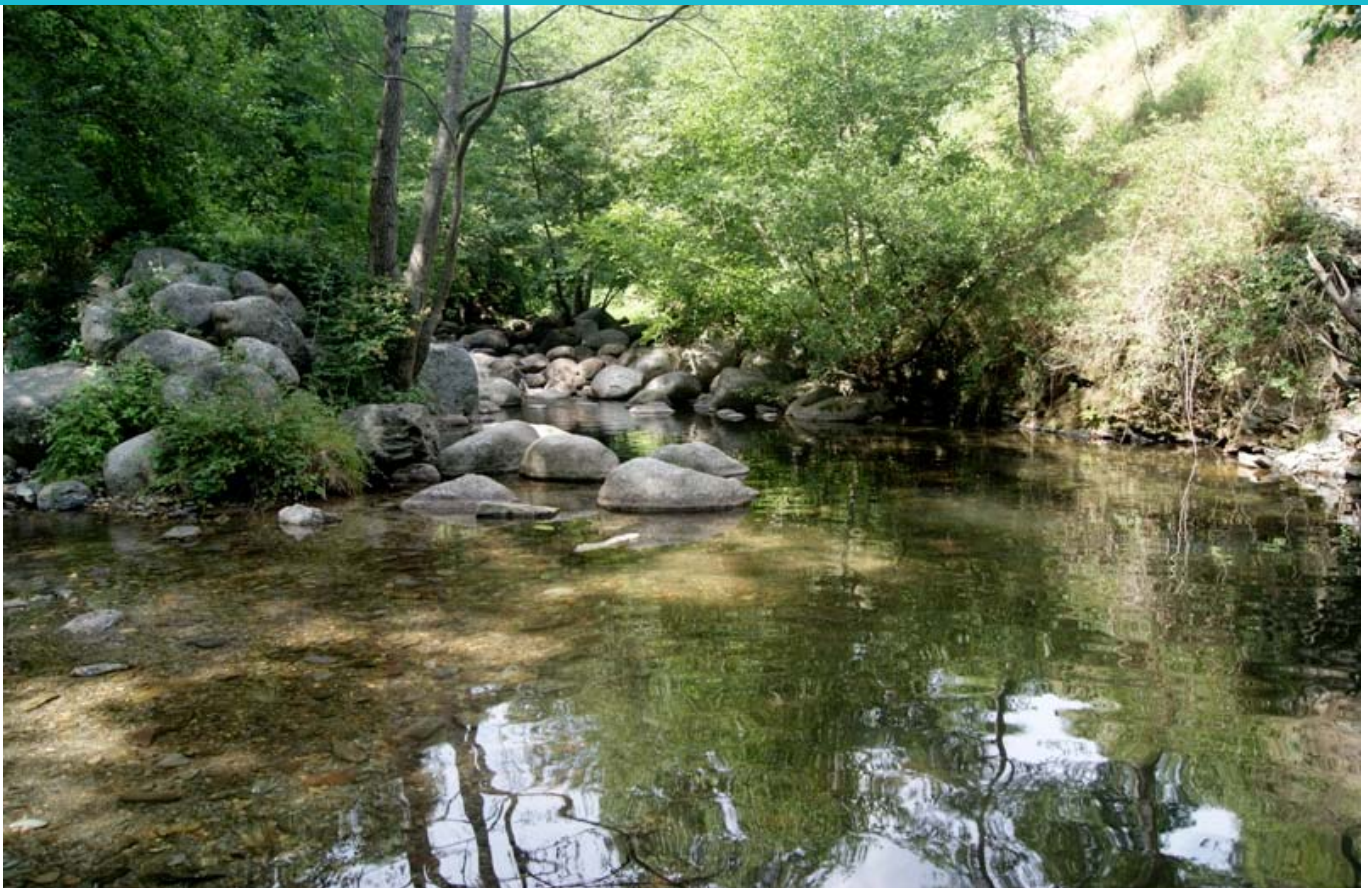


## AGLAE 2024

### PROFICIENCY TESTING SCHEME CATALOGUE

### Organic pollutants in clean waters



#### **AGLAE Association**

Parc des Pyramides  
427 rue des Bourelliers  
59320 Hallennes lez Haubourdin  
France

☎ +33 (0)3 20 16 91 40

[www.association-aglae.fr](http://www.association-aglae.fr)

[contact@association-aglae.fr](mailto:contact@association-aglae.fr)

## Organic pollutants in clean waters: new and list of PTs

### New programmes in the catalogue

#### Organic pollutants

- ✓ 5E Chelating agents in fresh waters

Organic pollutants
<b>Fresh waters</b>
<b>4C</b> Volatile organohalogens and benzene derivatives in fresh waters
<b>4Cb</b> Volatile organohalogens and benzene derivatives in fresh waters at low concentration levels
<b>5E</b> Chelating agents in fresh waters
<b>20A</b> Chlorophenols in fresh waters
<b>21A</b> Alkylphenols in fresh waters
<b>22A</b> Chloroanilines in fresh waters
<b>23A</b> Organotin compounds in fresh waters
<b>24A</b> Brominated Diphenyl Ethers in fresh waters
<b>24C</b> HBCDD in fresh waters and HBCDD, HBB in waste waters
<b>25A</b> Biphenyl in fresh waters
<b>26A</b> Phthalates in fresh waters
<b>27A</b> C10-C13 chloroalkanes (SCCPs) in fresh waters
<b>28A</b> Haloacetic acids in fresh waters
<b>29A</b> Epichlorohydrin in fresh waters
<b>52</b> AOX in waters
<b>54</b> Toxins of cyanobacteria in fresh waters
<b>55</b> Glyphosate, AMPA and other herbicides in fresh waters
<b>57</b> Pharmaceuticals in fresh waters
<b>58</b> Bisphenol A and S in fresh waters
<b>59</b> Perfluorinated compounds in fresh waters
<b>64</b> PAHs and PCBs in fresh waters
<b>65A</b> Pesticides and degradation residues - List 1 - in fresh waters
<b>65B</b> Pesticides and degradation residues – List 2 - in fresh waters
<b>65C</b> Pesticides and degradation residues - List 3 - in fresh waters
<b>65D</b> Pesticides and degradation residues - List 4 - in fresh waters
<b>65E</b> Parabens in fresh waters
<b>65F</b> Pesticides and degradation residues - List 5 - in fresh waters
<b>65G</b> Pesticides and degradation residues - List 6 - in fresh waters
<b>67</b> Acrylamide in fresh waters
<b>69</b> Metabolites of chloroacetamides in fresh waters
<b>Swimming pool waters</b>
<b>66</b> THMs in swimming pool waters
<b>Atypical and non-atypical mineral waters</b>
<b>92</b> BTEX and VOC in atypical and non-atypical natural mineral waters

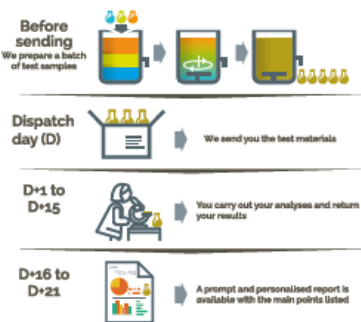
## Participate in AGLAE's External Quality Control



A WAY OF WORKING THAT PROVIDES YOU WITH THE HIGHEST STANDARD OF RESULTS WITH CONFIDENTIALITY AND IMPARTIALITY

Each step of the way, AGLAE is there supporting you.

### REGISTRATIONS FOR PROFICIENCY TESTING ARE DONE KNOWING THE WHOLE PROCESS, WITH A DETAILED AND RIGOUROUS SCHEDULE

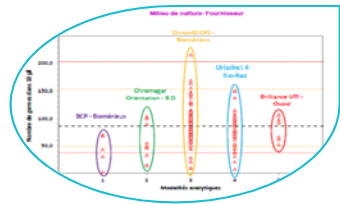


- ✓ The number of evaluations per year for each parameter is specified in the catalogue, concentration levels and stabilisation are available on request.
- ✓ AGLAE uses "express" shipments for your samples and makes sure of their distribution to your laboratory.
- ✓ A sufficient delay to analyse and the report the results.
- ✓ Via your member area, **enter your results and find instructions, assigned codes, reports, summaries of your results, certificate of participation...**

### THE OPTIMISATION OF RISK MANAGEMENT FOR YOUR LABORATORY



- You have a better visibility of potential anomalies through:
- ✓ An appropriate test design (duplicate samples, repeated measurements),
  - ✓ A large number of participants: around 200 laboratories in the field of 'base' microbiology and 'base' physico-chemical analyses.



- ✓ Influence of the analytical methods, manufacturers (equipment and consumables)... factors that we study to help you improve the quality of your analyses,
- ✓ For waters intended for medical use and water microbiology, estimation of your own uncertainties in microbiology,
- ✓ Check of your uncertainty estimates in chemistry (zeta-score),
- ✓ A report validated by experts of the field and personalised for most tests.

### ATTRACTIVE DISCOUNTS, PAYMENT CONDITIONS MADE EASIER

- Choose among the various programmes and benefit from discounts up to 15%,
- A possible payment in 2 or 3 folds depending on the amount your participation.
- Payment possible by cheque (in €), bank transfer, credit card on <https://www.helloasso.com/associations/a-g-l-a-e/paiements/aglae>

Amount of your invoice (excluding transport cost)	Discount
3000 ≤ Amount < 6000 € excl. VAT	<b>5%</b>
6000 ≤ Amount < 9000 € excl. VAT	<b>10%</b>
Amount ≥ 9000 € excl. VAT	<b>15%</b>

## Additional services



### ADDITIONAL TEST SAMPLES TO TEST ANOTHER METHOD, EVALUATE A TECHNICIAN

- ✓ Test samples available for almost all the tests at half price.
- ✓ Besides your usual distribution, you receive one (or several) additional parcel(s).
- ✓ The results of these samples are not statistically processed by AGLAE but for most tests you get a sheet **in your results file** where to **calculate your z-score**. Note that this sheet can also be used in case of unit error, incorrect results' report, etc.

⇒ Check the **list of samples and their price on your Member Area** (Downloads / Catalogues) and contact us to receive a quote. These additional samples need to be ordered after you registration for the test and before the shipment.



### QUALITY CONTROL MATERIALS FOR YOUR MONITORING AND IMPROVEMENT OF YOUR ANALYTICAL PERFORMANCE

- ✓ Materials coming from the **solid matrices tests: sediments, sludge, polluted sites and soils**.
- ✓ Purchased at any time during the year and delivered with a certificate presenting the precision values obtained during the test (assigned value and uncertainties).

⇒ Check the **list of materials, prices and available quantities on your Member Area** (Downloads / Catalogues) and contact us to receive a quote.

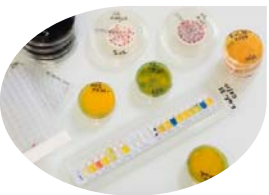


### TRAINING SESSIONS IN MICROBIOLOGY: ONE TOPIC POSSIBLY PROVIDED IN ENGLISH

Two-day on-line session to become operational for:

- ✓ Characterising a microbiological method according to ISO 13843 in order to validate it

⇒ *Should you be interested in such a session, please get back to us.*



### CUSTOMIZED SERVICE: 'PERFORMANCE CHARACTERISTICS OF MICROBIOLOGICAL METHODS'

Do you need to characterise specific methods?

AGLAE can provide you support to establish methods performance characteristics, in conformity with ISO 13843\*. Benefit from AGLAE's technical and statistical experience to validate your microbiological method.

\* *Water quality — Requirements for establishing performance characteristics of quantitative microbiological methods*

⇒ *Should you have such needs, contact us to study your request together and issue a quote.*



### SUMMARY OF YOUR RESULTS FOR WATER MICROBIOLOGY AND WATER FOR MEDICAL USE TESTS

Gather at any time your results and performance: for a selected period, your results are grouped in an Excel file; this is a tool to support you in your Internal Quality Control, your audits...

## Programmes' description

### Content

For each programme's description, you will find the technical content of the test : volumes, parameters, matrices, dispatch month...

The concentration levels and stabilisation modalities of the samples are available on request.

*The samples' dispatch months are given for information only.*

**Transport costs depend on the destination and tests selected within the programmes; contact us to get a quote.**

Our aim is to prepare materials as close as possible to the samples analysed in routine: the contamination levels can therefore be very low or very high.

➔ **Our concentration levels are available on request.**

### Caption



This logo shows that the programme is accredited by LABORATORIES section in compliance with ISO/IEC 17043.

## Glossary of the matrices used

Name of the matrix for water chemistry		Below the matrices that can be used, alone or mixed, to comply with the representativity of the specified matrix				
		public drinking waters	bottled waters	reverse osmosis waters	deionised waters	surface waters
<b>Natural mineral waters</b>						
<b>Non-atypical*</b>			<b>x</b> flat (dry residue at 180°C<1500 mg/L)			
<b>Atypical</b>	<b>carbo-gaseous</b>		<b>x</b> gaseous (CO <sub>2</sub> >250 mg/L)	<b>x</b> regasified (CO <sub>2</sub> >250 mg/L)		
	<b>highly mineralised</b>		<b>x</b> plates (dry residue at 180°C<1500 mg/L)			
<b>Fresh waters</b>						
<b>Non-atypical natural mineral waters*</b>			<b>x</b> flat (dry residue at 180°C<1500 mg/L)			
<b>Natural waters</b>						<b>x</b>
<b>Clean waters</b>		<b>x</b>	<b>x</b>	<b>x</b>	<b>x</b>	<b>x (clear)</b>

For more information on atypical waters, check the following document: [ANSES/LHN/REF-CSE - Version 3](#) (in French)

*\* For some parameters in non-atypical natural mineral waters, specific programmes exist (3C, 92) with concentration levels different from those in fresh waters.*

Name of the matrix for water chemistry		Below the matrices that can be used, alone or mixed, to comply with the representativity of the specified matrix			
		Waste waters from urban WWTP	Swimming pool waters	Estuary water, costal water	Synthetic waters
<b>Swimming pool waters</b>			<b>x</b>		
<b>Waste waters</b>		<b>x</b>			<b>x</b>
<b>Saline and brackish waters</b>				<b>x</b>	<b>x</b>

WWTP: Waste Water Treatment Plant

## PROGRAMME 4C:

### VOLATILE ORGANOHALOGENS AND BENZENE DERIVATIVES IN FRESH WATERS

The materials are suitable for the check of public drinking waters, spring waters and non-atypical natural mineral waters except for BTEX and VOHs provided in non-atypical mineral waters of programme 92.



€ 556 excl. VAT - total amount for 1 test (excluding transport costs)

56 participants in 2023 - EXPERIENCE > 25 YEARS



**Need to test another method, evaluate your staff?**

Order **additional test samples** (parcel in its entirety): € 280 excl. VAT (excluding transport costs)

#### Parameters to analyse

##### 24M4C.1 - Clean water - sent in March 2024 - Refrigerated parcel

**BTEX:** 1,2,3-trimethylbenzene<sup>[1]</sup>, 1,2,4-trimethylbenzene<sup>[1]</sup> (= pseudocumene), 1,3,5-trimethylbenzene<sup>[1]</sup> (= mesitylene), benzene, bromobenzene, ethylbenzene, isopropylbenzene, toluene, total xylenes, xylene ortho, xylene para + xylene meta

**VOHs:** 1,1,1,2-tetrachloroethane, 1,2-dichloroethane, bromoform, bromochloromethane, chloroform, dibromochloromethane, dibromomethane, dichlorobromomethane, tetrachloroethylene, trichloroethylene, THMs\*, vinyl chloride

**chlorobenzenes - light:** 1,2-dichlorobenzene, 1,3-dichlorobenzene, 1,4-dichlorobenzene, chlorobenzene, dichlorobenzenes (sum of the 3 isomers),  
**chlorotoluenes:** 2-chlorotoluene, 3-chlorotoluene, 4-chlorotoluene, chlorotoluenes (sum of the 3 isomers),  
**VOHs:** 1,1,1-trichloroethane, 1,1,2,2-tetrachloroethane, 1,1,2-trichloroethane, 1,1-dichloroethane, 1,1-dichloroethylene, 1,2-dibromoethane, 1,2-dichloroethylene (cis+trans), 1,2-dichloroethylene cis, 1,2-dichloroethylene trans, 1,2-dichloropropane, 1,3-dichloropropane, 1,3-dichloropropene (cis+trans), 3-chloroprene (3-chloropropene), carbon tetrachloride, chloroprene, dichloromethane, hexachlorobutadiene, hexachloroethane, , methyl bromide (bromomethane), methyl ter-butyl ether (MTBE), sec-butylbenzene<sup>[1]</sup>

#### Hexachlorobutadiene

**nitro-aromatics:** 1-chloro-2-nitrobenzene, 1-chloro-3-nitrobenzene, 1-chloro-4-nitrobenzene, 2,4-dinitrotoluene, 2,6-dinitrotoluene, 2-nitrotoluene, nitrobenzene,  
**chlorobenzenes:** 1,2,4,5-tetrachlorobenzene, tetrachlorobenzenes (sum of the 3 isomers), 1,2,3-trichlorobenzene, 1,2,4-trichlorobenzene, 1,3,5-trichlorobenzene, trichlorobenzenes (sum of the 3 isomers), hexachlorobenzene, pentachlorobenzene

<sup>[1]</sup> parameter not covered by accreditation (see general conditions of registration)

\*THM (= trihalomethanes): Sum of contents in chloroform + bromoform + dichlorobromomethane + dibromochloromethane.

## PARTICULARITIES



### Other recommended proficiency tests:

↳ **Programme 4Cb** 'Volatile organohalogenes and benzene derivatives in fresh waters at low concentration levels - **'Environmental approval'** to meet the requirements of French legislation (contact us for the concentration ranges).

↳ **Programme 92** 'BTEX and VOC in atypical and non-atypical natural mineral waters - **'Health approval'**



## PROGRAMME 4Cb: VOLATILE ORGANOHALOGENS AND BENZENE DERIVATIVES IN FRESH WATERS AT LOW CONCENTRATION LEVELS

*The materials are suitable for the check of public drinking waters, spring waters and non-atypical natural mineral waters except for BTEX and VOHs provided in non-atypical mineral waters of programme 92.*



€ 333 excl. VAT - total amount for 1 test (excluding transport costs)

61 participants in 2023 - EXPERIENCE > 25 YEARS



**Need to test another method, evaluate your staff?**

Order **additional test samples** (parcel in its entirety): € 170 excl. VAT (excluding transport costs)

Parameters to analyse
<b>24M4Cb.1 - Clean water - sent in November 2024 - Refrigerated parcel</b>
<b>BTEX:</b> 1,2,3-trimethylbenzene <sup>[1]</sup> , 1,2,4-trimethylbenzene <sup>[1]</sup> (= pseudocumene), 1,3,5-trimethylbenzene <sup>[1]</sup> (= mesitylene), benzene, bromobenzene, ethylbenzene, isopropylbenzene, toluene, total xylenes, xylene ortho, xylene para + xylene meta
<b>VOHs:</b> 1,1,1,2-tetrachloroethane, 1,2-dichloroethane, bromoform, bromochloromethane, chloroform, dibromochloromethane, dibromomethane, dichlorobromomethane, tetrachloroethylene, trichloroethylene, THMs*, vinyl chloride
<b>chlorobenzenes - light:</b> 1,2-dichlorobenzene, 1,3-dichlorobenzene, 1,4-dichlorobenzene, chlorobenzene, dichlorobenzenes (sum of the 3 isomers), <b>chlorotoluenes:</b> 2-chlorotoluene, 3-chlorotoluene, 4-chlorotoluene, chlorotoluenes (sum of the 3 isomers), <b>VOHs:</b> 1,1,1-trichloroethane, 1,1,2,2-tetrachloroethane, 1,1,2-trichloroethane, 1,1-dichloroethane, 1,1-dichloroethylene, 1,2-dibromoethane, 1,2-dichloroethylene (cis+trans), 1,2-dichloroethylene cis, 1,2-dichloroethylene trans, 1,2-dichloropropane, 1,3-dichloropropane, 1,3-dichloropropene (cis+trans), 3-chloroprene (3-chloropropene), carbon tetrachloride, chloroprene, dichloromethane,, hexachlorobutadiene, hexachloroethane, methyl bromide (bromomethane), methyl ter-butyl ether (MTBE), sec-butylbenzene <sup>[1]</sup>
Hexachlorobutadiene <b>nitro-aromatics:</b> 1-chloro-2-nitrobenzene, 1-chloro-3-nitrobenzene, 1-chloro-4-nitrobenzene, 2,4-dinitrotoluene, 2,6-dinitrotoluene, 2-nitrotoluene, nitrobenzene, <b>chlorobenzenes:</b> 1,2,4,5-tetrachlorobenzene, tetrachlorobenzenes (sum of the 3 isomers), 1,2,3-trichlorobenzene, 1,2,4-trichlorobenzene, 1,3,5-trichlorobenzene, trichlorobenzenes (sum of the 3 isomers), hexachlorobenzene, pentachlorobenzene
<sup>[1]</sup> parameter not covered by accreditation (see general conditions of registration)

\*THM (= trihalomethanes): Sum of contents in chloroform + bromoform + dichlorobromomethane + dibromochloromethane.

## PARTICULARITIES

**'Environment approval'**: this is an additional proficiency test identical to the tests of programme 4C but at low concentration levels to meet the requirements of French legislation (contact us for the concentration ranges).



### Other recommended proficiency test:

↳ **Programme 92** 'BTEX and VOC in atypical and non-atypical natural mineral waters - **'Health approval'**

**PROGRAMME 5E:  
CHELATING AGENTS IN FRESH WATERS**

€ 149 excl. VAT - total amount for 1 test (excluding transport costs)

16 participants in 2022 – EXPERIENCE: 1 YEAR



**Need to test another method, evaluate your staff?**

Order **additional test samples** (parcel in its entirety): **€ 75 excl. VAT** (excluding transport costs)

**New:** NTA, DTPA

<b>Parameters to analyse</b>
<b>24M5E.1 - Natural water - sent in June 2024 - Refrigerated parcel</b>
EDTA, NTA, DTPA

<b>PARTICULARITIES</b>
<b>Biannual periodicity:</b> this programme is provided one year out of two. It will be provided again in 2026.

## PROGRAMME 20A: CHLOROPHENOLS IN FRESH WATERS



€ 258 excl. VAT - total amount for 2 tests (excluding transport costs)

32 participants in 2023 - EXPERIENCE > 10 YEARS



**Need to test another method, evaluate your staff?**

Order **additional test samples** (parcel in its entirety): € 65 excl. VAT (excluding transport costs)

### Parameters to analyse

#### 24M20A.1 - Natural water - sent in January 2024 - Refrigerated parcel

2-chlorophenol, 3-chlorophenol, 4-chlorophenol, chlorophenols (sum of the 3 isomers),  
2,3-dichlorophenol, 2,4-dichlorophenol, 2,6-dichlorophenol,  
3,4-dichlorophenol, 3,5-dichlorophenol, dichlorophenols (sum of the 6 isomers),  
2,3,4-trichlorophenol, 2,3,5-trichlorophenol, 2,3,6-trichlorophenol,  
2,4,5-trichlorophenol, 2,4,6-trichlorophenol, 3,4,5-trichlorophenol,  
trichlorophenols (sum of the 6 isomers), pentachlorophenol, 4-chloro-3-methylphenol

#### 24M20A.2 - Natural water - sent in May 2024 - Refrigerated parcel

2-chlorophenol, 3-chlorophenol, 4-chlorophenol, chlorophenols (sum of the 3 isomers),  
2,3-dichlorophenol, 2,4-dichlorophenol, 2,6-dichlorophenol,  
3,4-dichlorophenol, 3,5-dichlorophenol, dichlorophenols (sum of the 6 isomers),  
2,3,4-trichlorophenol, 2,3,5-trichlorophenol, 2,3,6-trichlorophenol,  
2,4,5-trichlorophenol, 2,4,6-trichlorophenol, 3,4,5-trichlorophenol,  
trichlorophenols (sum of the 6 isomers), pentachlorophenol, 4-chloro-3-methylphenol

### PARTICULARITIES



You will receive a concentrated solution in addition to the bottles of natural water. The analyses have to be carried out with the reconstituted samples.

## PROGRAMME 21A: ALKYLPHENOLS IN FRESH WATERS



€ 187 excl. VAT -total amount for 2 tests (excluding transport costs)

29 participants in 2023 - EXPERIENCE > 10 YEARS



**Need to test another method, evaluate your staff?**

Order **additional test samples** (parcel in its entirety): € 50 excl. VAT (excluding transport costs)

### Parameters to analyse

#### 24M21A.1 - Natural water - sent in January 2024 - Refrigerated parcel

2-methylphenol [CAS 95-48-7], 4-methylphenol [CAS 106-44-5],  
4-n-nonylphenol [CAS 104-40-5], 4-nonylphenols [CAS 84852-15-3],  
4-tert-butylphenol [CAS 98-54-4], 4-tert-octylphenol [CAS 140-66-9],  
NP1EO - 4-nonylphenol monoethoxylate

#### 24M21A.2 - Natural water - sent in May 2024 - Refrigerated parcel

2-methylphenol [CAS 95-48-7], 4-methylphenol [CAS 106-44-5],  
4-n-nonylphenol [CAS 104-40-5], 4-nonylphenols [CAS 84852-15-3],  
4-tert-butylphenol [CAS 98-54-4], 4-tert-octylphenol [CAS 140-66-9],  
NP1EO - 4-nonylphenol monoethoxylate

### PARTICULARITIES



You will receive a concentrated solution in addition to the bottles of natural water. The analyses have to be carried out with the reconstituted samples.

## PROGRAMME 22A: CHLOROANILINES IN FRESH WATERS



€ 157 excl. VAT - total amount for 2 tests (excluding transport costs)

14 participants in 2023 - EXPERIENCE > 10 YEARS



**Need to test another method, evaluate your staff?**

Order **additional test samples** (parcel in its entirety): € 40 excl. VAT (excluding transport costs)

### Parameters to analyse

#### 24M22A.1 - Natural water - sent in January 2024 - Refrigerated parcel

2-chloroaniline, 3-chloroaniline, 4-chloroaniline,  
Chloroanilines (sum of the 3 isomers),  
3,4-dichloroaniline, 4-chloro-2-nitroaniline

#### 24M22A.2 - Natural water - sent in May 2024 - Refrigerated parcel

2-chloroaniline, 3-chloroaniline, 4-chloroaniline,  
Chloroanilines (sum of the 3 isomers),  
3,4-dichloroaniline, 4-chloro-2-nitroaniline

### PARTICULARITIES



You will receive a concentrated solution in addition to the bottles of natural water. The analyses have to be carried out with the reconstituted samples.

## PROGRAMME 23A: ORGANOTIN COMPOUNDS IN FRESH WATERS



€ 200 excl. VAT - total amount for 2 tests (excluding transport costs)

17 participants in 2023 - EXPERIENCE > 10 YEARS



**Need to test another method, evaluate your staff?**

Order **additional test samples** (parcel in its entirety): € 50 excl. VAT (excluding transport costs)

### Parameters to analyse

#### 24M23A.1 - Natural water - sent in February 2024 - Refrigerated parcel

monobutyltin cation, dibutyltin cation,  
dioctyltin cation<sup>[1]</sup>, tributyltin cation,  
triphenyltin cation, tetrabutyltin

#### 24M23A.2 - Natural water - sent in July 2024 - Refrigerated parcel

monobutyltin cation, dibutyltin cation,  
dioctyltin cation<sup>[1]</sup>, tributyltin cation,  
triphenyltin cation, tetrabutyltin

<sup>[1]</sup> parameter not covered by accreditation (see general conditions of registration)

### PARTICULARITIES



You will receive a concentrated solution in addition to the bottles of natural water.  
The analyses have to be carried out with the reconstituted samples.

## PROGRAMME 24A: BROMINATED DIPHENYL ETHERS IN FRESH WATERS



€ 247 excl. VAT - total amount for 2 tests (excluding transport costs)

17 participants in 2023 - EXPERIENCE > 10 YEARS



**Need to test another method, evaluate your staff?**

Order **additional test samples** (parcel in its entirety): € 65 excl. VAT (excluding transport costs)

### Parameters to analyse

#### 24M24A.1 - Natural water - sent in February 2024 - Refrigerated parcel

BDE-28, BDE-47, BDE-99, BDE-100,  
BDE-153, BDE-154, BDE-183, BDE-209

#### 24M24A.2 - Natural water - sent in October 2024 - Refrigerated parcel

BDE-28, BDE-47, BDE-99, BDE-100,  
BDE-153, BDE-154, BDE-183, BDE-209

### PARTICULARITIES



You will receive a concentrated solution in addition to the bottles of natural water. The analyses have to be carried out with the reconstituted samples.



## PROGRAMME 24C: HBCDD IN FRESH WATERS AND HBCDD, HBB IN WASTE WATERS



€ 361 excl. VAT - total amount for 2 tests (excluding transport costs)

14 participants in 2023 - EXPERIENCE: 5 YEARS

### Parameters to analyse

#### 24M24C.1 - Natural water - sent in April 2024 - Refrigerated parcel

alpha-HBCDD (alpha-hexabromocyclododecane)  
beta-HBCDD (beta-hexabromocyclododecane)  
gamma-HBCDD (gamma-hexabromocyclododecane)  
total HBCDD (total hexabromocyclododecane)

#### 24M24C.2 - Waste water - sent in October 2024 - Refrigerated parcel

total HBCDD (total hexabromocyclododecane)  
HBB (hexabromobiphenyl)<sup>[1]</sup>

<sup>[1]</sup> parameter not covered by accreditation (see general conditions of registration)

### PARTICULARITIES



You will receive a concentrated solution in addition to the bottles of natural water or waste water. The analyses have to be carried out with the reconstituted samples.

**PROGRAMME 25A:  
BIPHENYL IN FRESH WATERS**



**€ 213 excl. VAT** - total amount for 2 tests (excluding transport costs)

**14 participants** in 2023 - EXPERIENCE > 10 YEARS



**Need to test another method, evaluate your staff?**

Order **additional test samples** (parcel in its entirety): **€ 55 excl. VAT** (excluding transport costs)

Parameters to analyse
<b>24M25A.1 - Natural water - sent in February 2024 - Refrigerated parcel</b>
Biphenyl
<b>24M25A.2 - Natural water - sent in November 2024 - Refrigerated parcel</b>
Biphenyl

**PARTICULARITIES**



You will receive a concentrated solution in addition to the bottles of natural water. The analyses have to be carried out with the reconstituted samples.

## PROGRAMME 26A: PHTHALATES IN FRESH WATERS



€ 229 excl. VAT - total amount for 2 tests (excluding transport costs)

29 participants in 2023 - EXPERIENCE > 10 YEARS



**Need to test another method, evaluate your staff?**

Order **additional test samples** (parcel in its entirety): € 60 excl. VAT (excluding transport costs)

### Parameters to analyse

#### 24M26A.1 - Natural water - sent in February 2024 - Refrigerated parcel

BBzP (Butyl benzyl phthalate),  
DBP (Dibutylphthalate),  
DEHP (Di(2-ethylhexyl)phthalate),  
DEP (Diethylphthalate),  
DMP (Dimethylphthalate),  
DiBP (Diisobutylphthalate)

#### 24M26A.2 - Natural water - sent in November 2024 - Refrigerated parcel

BBzP (Butyl benzyl phthalate),  
DBP (Dibutylphthalate),  
DEHP (Di(2-ethylhexyl)phthalate),  
DEP (Diethylphthalate),  
DMP (Dimethylphthalate),  
DiBP (Diisobutylphthalate)

### PARTICULARITIES



You will receive a concentrated solution in addition to the bottles of natural water. The analyses have to be carried out with the reconstituted samples.

**PROGRAMME 27A:  
C10-C13 CHLOROALKANES (SCCPs) IN FRESH WATERS**



**€ 219 excl. VAT** - - total amount for 2 tests (excluding transport costs)

**11 participants** in 2023 - EXPERIENCE > 10 YEARS



**Need to test another method, evaluate your staff?**

Order **additional test samples** (parcel in its entirety): **€ 55 excl. VAT** (excluding transport costs)

Parameters to analyse
<b>24M27A.1 - Natural water - sent in March 2024 - Refrigerated parcel</b>
C10-C13 chloroalkanes
<b>24M27A.2 - Natural water - sent in October 2024 - Refrigerated parcel</b>
C10-C13 chloroalkanes

## PROGRAMME 28A: HALOACETIC ACIDS IN FRESH WATERS

*The materials are suitable for the check of analyses in public distribution waters,  
spring waters and non-atypical natural mineral water.*



**€ 246 excl. VAT** -total amount for 2 tests (excluding transport costs)

**26 participants** in 2023 - EXPERIENCE > 10 YEARS



**Need to test another method, evaluate your staff?**

Order **additional test samples** (parcel in its entirety): **€ 65 excl. VAT**  
(excluding transport costs)

### Parameters to analyse

#### 24M28A.1 - Clean water - sent in March 2024 - Refrigerated parcel

bromoacetic acid, bromochloroacetic acid, bromodichloroacetic acid,  
chloroacetic acid, dibromoacetic acid, dibromochloroacetic acid,  
dichloroacetic acid, tribromoacetic acid, trichloroacetic acid,  
sum of the 5 haloacetic acids: chloroacetic acid + dichloroacetic acid  
+ trichloroacetic acid + bromoacetic acid + dibromoacetic acid

#### 24M28A.2 - Clean water - sent in October 2024 - Refrigerated parcel

bromoacetic acid, bromochloroacetic acid, bromodichloroacetic acid,  
chloroacetic acid, dibromoacetic acid, dibromochloroacetic acid,  
dichloroacetic acid, tribromoacetic acid, trichloroacetic acid,  
sum of the 5 haloacetic acids: chloroacetic acid + dichloroacetic acid  
+ trichloroacetic acid + bromoacetic acid + dibromoacetic acid

### PARTICULARITIES



You will receive a concentrated solution in addition to the bottles of clean water. The analyses have to be carried out with the reconstituted samples.

**PROGRAMME 29A:  
EPICHLOROHYDRIN IN FRESH WATERS**

*The materials are suitable for the check of analyses in fresh waters, public drinking waters, spring waters and non-atypical natural mineral waters.*



**€ 187 excl. VAT** - total amount for 2 tests (excluding transport costs)

**23 participants** in 2023 - EXPERIENCE > 10 YEARS



**Need to test another method, evaluate your staff?**

Order **additional test samples** (parcel in its entirety): **€ 50 excl. VAT** (excluding transport costs)

Parameters to analyse
<b>24M29A.1 - Clean water - sent in April 2024 - Refrigerated parcel</b>
epichlorohydrin
<b>24M29A.2 - Natural water - sent in December 2024 - Refrigerated parcel</b>
epichlorohydrin

## PROGRAMME 52: AOX IN WATERS



**€ 334 excl. VAT** - total amount for 4 tests (excluding transport costs)

**40 participants** in 2023 - EXPERIENCE > 20 YEARS



**Need to test another method, evaluate your staff?**

Order **additional test samples** (parcel in its entirety): **€ 45 excl. VAT** (excluding transport costs)

Parameters to analyse
<b>24M52.1 - Clean water - sent in January 2024 - Refrigerated parcel</b>
AOX
<b>24M52.2 - Waste water - sent in July 2024 - Refrigerated parcel</b>
AOX, SPE-AOX <sup>[1]</sup>
<b>24M52.3 - Clean water - sent in September 2024 - Refrigerated parcel</b>
AOX
<b>24M52.4 - Waste water - sent in November 2024 - Refrigerated parcel</b>
AOX, SPE-AOX <sup>[1]</sup>
<sup>[1]</sup> parameter not covered by accreditation (see general conditions of registration)

**PROGRAMME 54:  
TOXINS OF CYANOBACTERIA IN FRESH WATERS**



**€ 1680 excl. VAT** - total amount for 2 tests (excluding transport costs)

**18 participants** in 2023 - EXPERIENCE > 15 YEARS



**Need to test another method, evaluate your staff?**

Order **additional test samples** (parcel in its entirety): **€ 420 excl. VAT** (excluding transport costs)

Parameters to analyse
<b>24M54.1 - Natural water - sent in March 2024 - Refrigerated parcel</b>
microcystin-LR, microcystin-RR, microcystin-YR microcystins by ELISA <sup>[1]</sup> test
<b>24M54.2 - Natural water - sent in August 2024 - Refrigerated parcel</b>
microcystin-LR, microcystin-RR, microcystin-YR microcystins by ELISA <sup>[1]</sup> test
<sup>[1]</sup> parameter not covered by accreditation (see general conditions of registration)



**PROGRAMME 55:**  
**GLYPHOSATE, AMPA AND OTHER HERBICIDES IN FRESH WATERS**

*The materials are suitable for the check of analyses in clear freshwaters, public drinking waters, spring waters and non-atypical natural mineral waters.*



**€ 448 excl. VAT** - total amount for 2 tests (excluding transport costs)

**30 participants** in 2023 - EXPERIENCE > 15 YEARS



**Need to test another method, evaluate your staff?**

Order **additional test samples** (parcel in its entirety): **€ 115 excl. VAT** (excluding transport costs)

Parameters to analyse	
<b>24M55.1 - Clean water - sent in February 2024 - Refrigerated parcel</b>	
AMPA, aminotriazole, glufosinate, glyphosate	
<b>24M55.2 - Clean water - sent in August 2024 - Refrigerated parcel</b>	
AMPA, aminotriazole, glufosinate, glyphosate	

## PROGRAMME 57: PHARMACEUTICALS IN FRESH WATERS

*The materials are suitable for the check of analyses in fresh waters, public drinking waters, spring waters and non-atypical natural mineral waters.*



€ 823 excl. VAT -total amount for 2 tests (excluding transport costs)

34 participants in 2023 - EXPERIENCE > 10 YEARS



**Need to test another method, evaluate your staff?**

Order **additional test samples** (parcel in its entirety): € 210 excl. VAT (excluding transport costs)

**New:** 17-beta-estradiol

Parameters to analyse
<b>24M57.1 - Clean water - sent in February 2024 - Refrigerated parcel</b>
1-hydroxy ibuprofen <sup>[1]</sup> , <b>17-beta-estradiol<sup>[1]</sup></b> , 2-hydroxy ibuprofen <sup>[1]</sup> , acetazolamide <sup>[1]</sup> , caffeine, cyclophosphamide, erythromycin, estrone, ethynylestradiol, fenofibric acid, ibuprofen, lorazepam, metformin, metoprolol, metronidazole, oxazepam, paracetamol, sotalol, sulfamethazine, sulfamethoxazole
1,7-dimethylxanthine <sup>[1]</sup> , acetylsalicylic acid <sup>[1]</sup> , atenolol, carbamazepine, carbamazepine epoxide, carboxyibuprofen <sup>[1]</sup> , ciprofloxacin, cotinine, diazepam, diclofenac, ketoprofen, niflumic acid, norethindrone, ofloxacin, tramadol, triclocarban
<b>24M57.2 - Natural water - sent in August 2024 - Refrigerated parcel</b>
1-hydroxy ibuprofen <sup>[1]</sup> , <b>17-beta-estradiol<sup>[1]</sup></b> , 2-hydroxy ibuprofen <sup>[1]</sup> , acetazolamide <sup>[1]</sup> , caffeine, cyclophosphamide, erythromycin, estrone, ethynylestradiol, fenofibric acid, ibuprofen, lorazepam, metformin, metoprolol, metronidazole, oxazepam, paracetamol, sotalol, sulfamethazine, sulfamethoxazole
1,7-dimethylxanthine <sup>[1]</sup> , acetylsalicylic acid <sup>[1]</sup> , atenolol, carbamazepine, carbamazepine epoxide, carboxyibuprofen <sup>[1]</sup> , ciprofloxacin, cotinine, diazepam, diclofenac, ketoprofen, niflumic acid, norethindrone, ofloxacin, tramadol, triclocarban
<sup>[1]</sup> parameter not covered by accreditation (see general conditions of registration)

### PARTICULARITIES



You will receive two concentrated solutions in addition to the bottles of water. The analyses have to be carried out with the reconstituted samples.

## PROGRAMME 58: BISPHENOL A AND S IN FRESH WATERS

*The materials are suitable for the check of analyses in public distribution waters,  
spring waters and non-atypical natural mineral water.*



**€ 207 excl. VAT** - total amount for 2 tests (excluding transport costs)

**23 participants** in 2023 - EXPERIENCE > 10 YEARS



**Need to test another method, evaluate your staff?**

Order **additional test samples** (parcel in its entirety): **€ 55 excl. VAT** (excluding transport costs)

### Parameters to analyse

#### 24M58.1 - Clean water - sent in April 2024 - Refrigerated parcel

bisphenol A, bisphenol S

#### 24M58.2 - Clean water - sent in August 2024 - Refrigerated parcel

bisphenol A, bisphenol S

### PARTICULARITIES



You will receive a concentrated solution in addition to the bottles of clean water. The analyses have to be carried out with the reconstituted samples.

## PROGRAMME 59: PERFLUORINATED COMPOUNDS IN FRESH WATERS



€ 484 excl. VAT - total amount for 2 tests (excluding transport costs)

45 participants in 2023 - EXPERIENCE > 10 YEARS



**Need to test another method, evaluate your staff?**

Order **additional test samples** (parcel in its entirety): € 125 excl. VAT (excluding transport costs)

**New:** sum of the 20 perfluorinated compounds

### Parameters to analyse

#### 24M59.1 - Natural water - sent in May 2024 - Refrigerated parcel

PFBA [CAS 375-22-4], PFBS<sup>[1]</sup> [CAS 375-73-5], PFDA [CAS 335-76-2],  
 PFDS [CAS 335-77-3], PFDoDA [CAS 307-55-1] (=PFDoA),  
 PFDoDS<sup>[1]</sup> [CAS 79780-39-5], PFHpA [CAS 375-85-9], PFHpS<sup>[1]</sup> [CAS 375-92-8],  
 PFHxA [CAS 307-24-4], PFHxS - linear isomer [CAS 355-46-4] (=PFHS), PFNA [CAS 375-95-1],  
 PFNS [CAS 68259-12-1], PFOA [CAS 335-67-1], PFOS - linear isomer [CAS 1763-23-1],  
 PFPeA [CAS 2706-90-3], PFPeS [CAS 2706-91-4],  
 PFTTrDA [CAS 72629-94-8], PFTTrDS<sup>[1]</sup> [CAS 791563-89-8],  
 PFUnDA [CAS 2058-94-8], PFUnDS<sup>[1]</sup> [CAS 749786-16-1]  
**Sum of the 20 perfluorinated compounds<sup>[1]</sup>**

#### 24M59.2 - Natural water - sent in September 2024 - Refrigerated parcel

PFBA [CAS 375-22-4], PFBS<sup>[1]</sup> [CAS 375-73-5], PFDA [CAS 335-76-2],  
 PFDS [CAS 335-77-3], PFDoDA [CAS 307-55-1] (=PFDoA),  
 PFDoDS<sup>[1]</sup> [CAS 79780-39-5], PFHpA [CAS 375-85-9], PFHpS<sup>[1]</sup> [CAS 375-92-8],  
 PFHxA [CAS 307-24-4], PFHxS - linear isomer [CAS 355-46-4] (=PFHS),  
 PFNA [CAS 375-95-1], PFNS [CAS 68259-12-1], PFOA [CAS 335-67-1],  
 PFOS - linear isomer [CAS 1763-23-1], PFPeA [CAS 2706-90-3], PFPeS [CAS 2706-91-4],  
 PFTTrDA [CAS 72629-94-8], PFTTrDS<sup>[1]</sup> [CAS 791563-89-8],  
 PFUnDA [CAS 2058-94-8], PFUnDS<sup>[1]</sup> [CAS 749786-16-1]  
**Sum of the 20 perfluorinated compounds<sup>[1]</sup>**

<sup>[1]</sup> parameter not covered by accreditation (see general conditions of registration)

### PARTICULARITIES



You will receive a concentrated solution in addition to the bottles of natural water. The analyses have to be carried out with the reconstituted samples.

## PROGRAMME 64: PAHs AND PCBs IN FRESH WATERS

*The materials are suitable for the control of public drinking waters,  
spring waters and non-atypical natural mineral waters.*



€ 838 excl. VAT - total amount for 2 tests (excluding transport costs)

53 participants in 2023 - EXPERIENCE > 25 YEARS



**Need to test another method, evaluate your staff?**

Order **additional test samples** (parcel in its entirety): € 210 excl. VAT (excluding transport costs)

Parameters to analyse
<b>24M64.1 - Clean water - sent in January 2024 - Refrigerated parcel</b>
<p><b>PAHs:</b> 2-methylfluoranthene, 2-methylnaphtalene, acenaphtene, acenaphtylene, anthracene, benzo[a]anthracene, benzo[a]pyrene, benzo[b]fluoranthene, benzo[g,h,i]perylene, benzo[k]fluoranthene, chrysene, dibenzo[a,h]anthracene, fluoranthene, fluorene, indeno[1,2,3 - cd]pyrene, naphtalene, phenanthrene, pyrene</p>
<p><b>PCBs:</b> PCB 28, PCB 52, PCB 101, PCB 118, PCB 138, PCB 153, PCB 180, PCB 194</p>
<b>24M64.2 - Clean water - sent in June 2024 - Refrigerated parcel</b>
<p><b>PAHs:</b> 2-methylfluoranthene, 2-methylnaphtalene, acenaphtene, acenaphtylene, anthracene, benzo[a]anthracene, benzo[a]pyrene, benzo[b]fluoranthene, benzo[g,h,i]perylene, benzo[k]fluoranthene, chrysene, dibenzo[a,h]anthracene, fluoranthene, fluorene, indeno[1,2,3 - cd]pyrene, naphtalene, phenanthrene, pyrene</p>
<p><b>PCBs:</b> PCB 28, PCB 52, PCB 101, PCB 118, PCB 138, PCB 153, PCB 180, PCB 194</p>

## PROGRAMME 65A:

### PESTICIDES AND DEGRADATION RESIDUES - LIST 1 - IN FRESH WATERS

*The materials are suitable for the check of analyses in fresh waters, public drinking waters, spring waters and non-atypical natural mineral waters.*



€ 514 excl. VAT - total amount for 2 tests (excluding transport costs)

48 participants in 2023 - EXPERIENCE > 25 YEARS



**Need to test another method, evaluate your staff?**

Order **additional test samples** (parcel in its entirety): € 130 excl. VAT (excluding transport costs)

#### Parameters to analyse

##### 24M65A.1 - Clean water - sent in March 2024 - Refrigerated parcel

Pesticides and degradation residues - list 1

##### 24M65A.2 - Natural water - sent in October 2024 - Refrigerated parcel

Pesticides and degradation residues - list 1

#### PARTICULARITIES

##### Particularity of the test design:

\*You have 2L of sample (2 bottles of 1L) to carry out one measurement of all the parameters. You will receive a concentrated solution in addition to the bottles of water. **The analyses have to be carried out with the reconstituted samples.**



**Pesticides and degradation residues - list 1:** 2,4'-DDD , 2,4'-DDE, 2,4'-DDT, 4,4'-DDD, 4,4'-DDE, 4,4'-DDT, aclonifen, alachlor, aldrin, alpha-endosulfan, alpha-HCH, anthraquinone, beta-endosulfan, beta-HCH, bifenox, chlordane (total), chlordecone, chlorfenvinphos, chlormephos, chlorpropham, chlorpyrifos-ethyl, chlorpyrifos-methyl, cis-chlordane (CAS 5103-71-9), cypermethrin, delta-HCH, deltamethrin, demeton-O<sup>[1]</sup>, diazinon, dichlorvos, diclofop methyl, dieldrin, endosulfan (total), endrin, epsilon HCH, ethion, ethofumesate, ethoprophos, fenitrothion, fenvalerate, flurochloridone, HCH total (sum of isomers alpha+beta+gamma+delta), heptachlorepoxyde (total), heptachlorepoxyde endo trans, heptachlorepoxyde exo cis, heptachlor, ixynil octanoate, iprodione, isodrin, lambda-cyhalothrin, lindane (gamma-HCH), malathion, oxadiazon, parathion-ethyl, parathion-methyl, pendimethalin, piperonyl butoxyde, procymidone, pyrimiphos-methyl, quinoxifen, trans-chlordane (CAS 5103-74-2), tributyl phosphate, trifluralin

<sup>[1]</sup> parameter not covered by accreditation (see general conditions of registration)

## PROGRAMME 65B: PESTICIDES AND DEGRADATION RESIDUES - LIST 2 - IN FRESH WATERS

*The materials are suitable for the check of analyses in fresh waters, public drinking waters, spring waters and non-atypical natural mineral waters.*



€ 545 excl. VAT - total amount for 2 tests (excluding transport costs)

54 participants in 2023 - EXPERIENCE > 25 YEARS



**Need to test another method, evaluate your staff?**

Order **additional test samples** (parcel in its entirety): € 140 excl. VAT (excluding transport costs)

### Parameters to analyse

#### 24M65B.1 - Clean water - sent in March 2024 - Refrigerated parcel

Pesticides and degradation residues - list 2

#### 24M65B.2 - Natural water - sent in October 2024 - Refrigerated parcel

Pesticides and degradation residues - list 2

### PARTICULARITIES

\* **Particularity of the test design:** You have 2L of sample (2 bottles of 1L) to carry out one measurement of all the parameters.

**Pesticides and degradation residues - list 2:** 2,4-D, MCPA, 2,6-dichlorobenzamide, 2-hydroxyatrazine, acetochlor, ametryn, atrazine, azoxystrobin, bentazon, boscalid, bromacil, carbendazim, carbofuran, chloridazone, chlortoluron, clomazone, cyanazine, cyproconazole, cyprodinil, deisopropylatrazine, desethylatrazine, desethylterbuthylazine, dichlorprop, difenoconazole, diflufenicanil, dimethachlor, dimethenamid, dimethomorph, diuron, epoxiconazole, fenpropidin, flusilazole, hexaconazole, hexazinone, imidaclopride, isoproturon, isoproturon-didemethyl (= IPPU), kresoxim-methyl, lenacile, linuron, mecoprop (= MCPP), metamitron, metazachlor, methabenzthiazuron, methomyl, metobromuron, metolachlor, metoxuron, metribuzin, monuron, napropamide, oxadixyl, prometryn, propachlor, propazine, propiconazole, propyzamide, pyrimethanil, simazine, tebuconazole, terbumeton, terbuthylazine, terbutryn, tetraconazole, tolyltriazole

## PROGRAMME 65C:

### PESTICIDES AND DEGRADATION RESIDUES - LIST 3 - IN FRESH WATERS

*The materials are suitable for the check of the analyses in fresh waters, public drinking waters, spring waters and non-atypical natural mineral waters.*



€ 458 excl. VAT - total amount for 2 tests (excluding transport costs)

46 participants in 2023 - EXPERIENCE > 5 YEARS



**Need to test another method, evaluate your staff?**

Order **additional test samples** (parcel in its entirety): € 115 excl. VAT (excluding transport costs)

#### Parameters to analyse

##### 24M65C.1 - Clean water - sent in April 2024 - Refrigerated parcel

Pesticides and degradation residues - list 3

##### 24M65C.2 - Natural water - sent in November 2024 - Refrigerated parcel

Pesticides and degradation residues - list 3

#### PARTICULARITIES

\* **Particularity of the test design:** You have 2L of sample (2 bottles of 1L) to carry out one analysis of all the parameters.

**Pesticides and degradation residues - list 3:** 1-(3,4-dichlorophenyl)-3-methylurea(= demethyl diuron), asulame, atrazine 2-hydroxy-desethyl, atrazine deisopropyl desethyl, benfluralin, benzotriazole, bromoxynil, cybutryn, cymoxanil, dicamba, dichlormid, dimethoate, dinoterbe, ethidimuron, fenarimol, fenoxycarb, fipronil, flonicamid, florasulam, fludioxonil, flufenacet (=thiaflumide), fluroxypyr, flurtamone, foramsulfuron, fosthiazate, hydroxyterbuthylazine, imazalil, imazamox, iodosulfuron-methyl, ioxynil, isoxaflutole, mercaptodimethur (= methiocarb), mesosulfuron-methyl, mesotrione, metaldehyde, metconazole, metsulfuron methyl, nicosulfuron, omethoate, oryzalin, picloram, pirimicarb, prochloraz, propamocarb, propham, prosulfocarb, prosulfuron, quinmerac, rimsulfuron, spiroxamine, sulcotrione, sulfosulfuron, tebutame, terbumeton desethyl, thiabendazole, thiamethoxam, thifensulfuron methyl, triadimenol, triclopyr, triclosan, trinexapac-ethyl



## PROGRAMME 65D:

### PESTICIDES AND DEGRADATION RESIDUES - LIST 4 - IN FRESH WATERS

The materials are suitable for the control of public drinking waters, spring waters and non-atypical natural mineral waters.



€ 261 excl. VAT - total amount for 2 tests (excluding transport costs)

26 participants in 2023 - EXPERIENCE > 5 YEARS



**Need to test another method, evaluate your staff?**

Order **additional test samples** (parcel in its entirety): € 65 excl. VAT (excluding transport costs)

#### Parameters to analyse

##### 24M65D.1 - Clean water - sent in April 2024 - Refrigerated parcel

beflubutamid, benoxacor, bixafen, cadusafos, clethodim,  
daminozide, dichlobenil, fipronil sulfone, galaxolide, maleic hydrazide,  
N-butylbenzenesulfonamide (NBBS),  
N,N-dimethyl-N'-P-tolylsulphamide (DMST),  
triflurosulfuron-methyl

chlormequat, diquat, fosetyl aluminium, mepiquat, paraquat

##### 24M65D.2 - Clean water - sent in December 2024 - Refrigerated parcel

beflubutamid, benoxacor, bixafen, cadusafos, clethodim,  
daminozide, dichlobenil, fipronil sulfone, galaxolide, maleic hydrazide,  
N-butylbenzenesulfonamide (NBBS),  
N,N-dimethyl-N'-P-tolylsulphamide (DMST),  
triflurosulfuron-methyl

chlormequat, diquat, fosetyl aluminium, mepiquat, paraquat

#### PARTICULARITIES

Some molecules are analysed by few laboratories. If the number of results is lower than 8, the assigned value will be the spiking value and the standard deviation for proficiency assessment will be determined from reproducibility values observed during previous tests.

## PROGRAMME 65E: PARABENS IN FRESH WATERS

*The materials are suitable for the check of analyses in freshwaters, public drinking waters, spring waters and non-atypical natural mineral waters.*



€ 213 excl. VAT - total amount for 2 tests (excluding transport costs)

10 participants in 2023 - EXPERIENCE: 5 YEARS



**Need to test another method, evaluate your staff?**

Order **additional test samples** (parcel in its entirety): € 55 excl. VAT (excluding transport costs)

### Parameters to analyse

#### 24M65E.1 - Clean water - sent in February 2024 - Refrigerated parcel

ethylparaben, methylparaben, propylparaben

#### 24M65E.2 - Natural water - sent in October 2024 - Refrigerated parcel

ethylparaben, methylparaben, propylparaben

### PARTICULARITIES



You will receive a concentrated solution in addition to the bottles of water. The analyses have to be carried out with the reconstituted samples.

## PROGRAMME 65F: PESTICIDES AND DEGRADATION RESIDUES - LIST 5 - IN FRESH WATERS

*The materials are suitable for the control of fresh waters, public drinking waters, spring waters and non-atypical natural mineral waters.*



€ 769 HT -total amount for 2 tests (excluding transport costs)

41 participants in 2023 - EXPERIENCE: 2 YEARS



**Need to test another method, evaluate your staff?**

Order **additional test samples** (parcel in its entirety): € 225 excl. VAT for 24M65F.1 and € 162 excl. VAT for 24M65F.2 (excluding transport costs)

Parameters to analyse <i>(implemented once during the year and in 2 deliveries)</i>
<b>24M65F.1 - Clean water - sent in January 2024 - Refrigerated parcel</b>
Pesticides and degradation residues - <a href="#">list 5.1</a>
<b>24M65F.2 - Clean water - sent in June 2024 - Refrigerated parcel</b>
Pesticides and degradation residues - <a href="#">list 5.2</a>

### PARTICULARITIES



**PAY ATTENTION:** the list of parameters to analyse in the test 24M65F.1 (list 5.1) is different from that provided in the test 24M65F.2 (list 5.2). See details of the parameters below.

\* **Particularity of the test design for 24M65F.1:** You have 2L of sample (2 bottles of 1L) to carry out one measurement of all the parameters.

#### Test 24M65F.1 - Pesticides and degradation residues - list 5.1:

2,4,5-T, 2,4-DB<sup>[1]</sup>, 2,4-MCPB (MCPB), 3-hydroxy-carbofuran, acetamiprid, aldicarb, amidosulfuron, benalaxyl, bromuconazole, bupirimate, carbaryl, carbetamide, carboxine, carfentrazone-ethyl, chlorantraniliprole, chlorbromuron, chloridazone desphenyl<sup>[1]</sup>, chloridazone methyl desphenyl, chlorothalonil (daconil or tetrachloroisophthalonitrile), chlorothalonil SA (chlorothalonil-M-R417888), chlorothalonil-4-hydroxy (chlorothalonil-M-R182281), chlorothalonil-M-R471811, chloroxuron, clothianidin<sup>[1]</sup>, cycloxydim<sup>[1]</sup>, desmethylisoproturon (1-(4-isopropylphenyl)-3-methylurea or IPU-1CH3), desmetryn, didemethyldiuron (3,4-DCPU or DCPU or 3,4-dichlorophenylurea), diflubenzuron (difluron), dimefuron, dinoseb (DNBP), fenbuconazole, fenpropimorph, fenuron (PDU), flazasulfuron (shibagen), fluazifop<sup>[1]</sup>, fluazifop-P-butyl<sup>[1]</sup>, fluoxastrobine, fluquinconazole, flutriafol, iprovalicarb, isoxaben, metalaxyl, monolinuron, myclobutanil, norflurazon, paclobutrazole, penconazole, pencycuron, picoxystrobine, pinoxaden, propanil (3,4-DCPA or DCPA), propoxur, pyraclostrobine, pyroxsulame, quintozone<sup>[1]</sup> (terrachlor or pentachloronitrobenzene PCNB), sebuthylazine, simazine-hydroxy<sup>[1]</sup>, tebufenozide, thiacloprid, triallate<sup>[1]</sup>, triasulfuron, tribenuron-methyl (tribenuron), trifloxystrobine, tritosulfuron (biathlon), vinclozolin, zoxamide (zoxium)

<sup>[1]</sup> parameter not covered by accreditation (see general conditions of registration)

**Test 24M65F.2 - Pesticides and degradation residues - list 5.2:**

acifluorfen<sup>[1]</sup>, aldicarb-sulfone<sup>[1]</sup>, aldicarb-sulfoxide<sup>[1]</sup>, atrazine deisopropyl 2-hydroxy<sup>[1]</sup>, buturon<sup>[1]</sup>, clodinafop-propargyl<sup>[1]</sup>, clopyralid<sup>[1]</sup>, cloquintocet-mexyl<sup>[1]</sup>, desmethyl-norflurazon<sup>[1]</sup>, diethofencarb<sup>[1]</sup>, fluxapyroxad<sup>[1]</sup>, imazametabenz<sup>[1]</sup>, imazamethabenz-methyl<sup>[1]</sup>, mepanipirim<sup>[1]</sup> (mepanipyr), methoxyfenozide<sup>[1]</sup>, metrafenone<sup>[1]</sup>, molinate<sup>[1]</sup>, neburon<sup>[1]</sup>, N,N-Dimethylsulfamide<sup>[1]</sup> (DMS), oxamyl<sup>[1]</sup>, prometon<sup>[1]</sup>, sebumeton<sup>[1]</sup>, simetryn<sup>[1]</sup>, spirotetramat<sup>[1]</sup>, tebuthiuron<sup>[1]</sup>, terbuthylazine<sup>[1]</sup> desethyl-2-hydroxy<sup>[1]</sup>, triadimefon<sup>[1]</sup>, triflumuron<sup>[1]</sup>, triticonazole<sup>[1]</sup>

<sup>[1]</sup> parameter not covered by accreditation (see general conditions of registration)

## PROGRAMME 65G:

### PESTICIDES AND DEGRADATION RESIDUES - LIST 6 - IN FRESH WATERS

*The materials are suitable for the check of analyses in fresh waters, public drinking waters, spring waters and non-atypical natural mineral waters.*



€ 146 **excl. VAT** - total amount for 1 test (excluding transport costs)

28 participants in 2023 - EXPERIENCE: 2 YEARS



**Need to test another method, evaluate your staff?**

Order **additional test samples** (parcel in its entirety): € 75 **excl. VAT** (excluding transport costs)

#### Parameters to analyse

**24M65G.1 - Clean water - sent in April 2024 - Refrigerated parcel**

Pesticides and degradation residues - list 6

#### PARTICULARITIES

##### **Pesticides and degradation residues - list 6:**

Azinphos-ethyl, azinphos-methyl, bifenthrine, bromophos-ethyl, bromophos-methyl, cyfluthrine, dicofol<sup>[1]</sup> (kelthane), endosulfan sulfate, ethephon<sup>[1]</sup>, fenpropathrine, fenthion, fonofos, isofenphos, methidathion, methoxychlor (DMDT or methoxy-DDT), mevinphos (phosdrin or duraphos), oxychlordane, oxyfluorfen, permethrin<sup>[1]</sup>, pethoxamid, phosalone<sup>[1]</sup> (benzphos or zolone), pyrimiphos-ethyl, sulfotep<sup>[1]</sup>, terbuphos<sup>[1]</sup>, triazophos, vamidothion

<sup>[1]</sup> parameter not covered by accreditation (see general conditions of registration)

## PROGRAMME 67: ACRYLAMIDE IN FRESH WATERS

*The materials are suitable for the check of analyses in fresh waters, public drinking waters, spring waters and non-atypical natural mineral waters.*



**190 € excl. VAT** - total amount for 2 tests (excluding transport costs)

**18 participants** in 2023 - EXPERIENCE > 5 YEARS



**Need to test another method, evaluate your staff?**

Order **additional test samples** (parcel in its entirety): **50 € excl. VAT** (excluding transport costs)

### Parameters to analyse

**24M67.1 - Clean water - sent in April 2024 - Refrigerated parcel**

acrylamide

**24M67.2 - Natural water - sent in September 2024 - Refrigerated parcel**

acrylamide

### PARTICULARITIES



You will receive a concentrated solution in addition to the bottles of water. The analyses have to be carried out with the reconstituted samples.

## PROGRAMME 69:

### METABOLITES OF CHLOROACETAMIDES IN FRESH WATERS

*The materials are suitable for the check of fresh waters, public drinking waters, spring waters and non-atypical natural mineral waters.*



€ 390 excl. VAT - total amount for 2 tests (excluding transport costs)

28 participants in 2023 - EXPERIENCE > 5 YEARS



**Need to test another method, evaluate your staff?**

Order **additional test samples** (parcel in its entirety): € 100 excl. VAT (excluding transport costs)

#### Parameters to analyse

##### 24M69.1 - Clean water - sent in April 2024 - Refrigerated parcel

Acetochlor ESA, Acetochlor OXA, Alachlor ESA,  
Alachlor OXA, Dimethachlor CGA 369873,  
Dimethachlor ESA (Dimethachlor CGA 354742),  
Dimethachlor OXA, Dimethenamid ESA , Dimethenamid OXA,  
Flufenacet ESA , Flufenacet OXA, Metazachlor ESA, Metazachlor OXA,  
Metolachlor ESA, Metolachlor NOA 413173, Metolachlor OXA,  
Propachlor ESA<sup>[1]</sup>, Propachlor OXA<sup>[1]</sup>

##### 24M69.2 - Natural water - sent in December 2024 - Refrigerated parcel

Acetochlor ESA, Acetochlor OXA, Alachlor ESA,  
Alachlor OXA, Dimethachlor CGA 369873,  
Dimethachlor ESA (Dimethachlor CGA 354742),  
Dimethachlor OXA, Dimethenamid ESA , Dimethenamid OXA,  
Flufenacet ESA , Flufenacet OXA, Metazachlor ESA, Metazachlor OXA,  
Metolachlor ESA, Metolachlor NOA 413173, Metolachlor OXA,  
Propachlor ESA<sup>[1]</sup>, Propachlor OXA<sup>[1]</sup>

<sup>[1]</sup> parameter not covered by accreditation (see general conditions of registration)

## PROGRAMME 66: THMs IN SWIMMING POOL WATERS



€ 172 excl. VAT - total amount for 2 tests (excluding transport costs)

48 participants in 2023 - EXPERIENCE: 10 YEARS



**Need to test another method, evaluate your staff?**

Order **additional test samples** (parcel in its entirety): € 45 excl. VAT (excluding transport costs)

### Parameters to analyse

#### 24M66.1 - Swimming pool water - sent in May 2024 - Refrigerated parcel

bromoform, chloroform, dibromochloromethane, dichlorobromomethane, trihalomethanes (THMs)

#### 24M66.2 - Swimming pool water - sent in October 2024 - Refrigerated parcel

bromoform, chloroform, dibromochloromethane, dichlorobromomethane, trihalomethanes (THMs)

### PARTICULARITIES

**THMs (= trihalomethanes):**

sum of the contents of chloroform + bromoform + dichlorobromomethane + dibromochloromethane



## PROGRAMME 92: BTEX AND VOC IN ATYPICAL AND NON-ATYPICAL NATURAL MINERAL WATERS

*Non-atypical mineral waters: flat mineral water with dry residue content at 180°C < 1500 mg/L*

*Atypical mineral waters: flat mineral waters with dry residue content at 180°C > 1500 mg/L or carbogaseous waters with CO<sub>2</sub> > 250 mg/L*



€ 537 excl. VAT - total amount for 2 tests (excluding transport costs)

17 participants in 2023 - EXPERIENCE > 5 YEARS



**Need to test another method, evaluate your staff?**

Order **additional test samples** (parcel in its entirety): € 135 excl. VAT (excluding transport costs)

### Parameters to analyse

#### 24M92.1 - sent in June 2024 - Refrigerated parcel

##### Non-atypical mineral water

**BTEX:** benzene, toluene, total xylenes, xylene ortho, xylene para + xylene meta, ethylbenzene

**VOC:** 1,2-dichloroethane, bromoform, chloroform, dibromochloromethane, dichlorobromomethane, tetrachloroethylene, trichloroethylene, trihalomethanes (THMs)\*, vinyl chloride

##### Carbogaseous water (sparkling water)

**BTEX:** benzene, toluene, total xylenes, xylene ortho, xylene para + xylene meta, ethylbenzene

**VOC:** 1,2-dichloroethane, bromoform, chloroform, dibromochloromethane, dichlorobromomethane, tetrachloroethylene, trichloroethylene, trihalomethanes (THMs)\*, vinyl chloride

#### 24M92.2 - sent in November 2024 - Refrigerated parcel

##### Non-atypical mineral water

**BTEX:** benzene, toluene, total xylenes, xylene ortho, xylene para + xylene meta, ethylbenzene

**VOC:** 1,2-dichloroethane, bromoform, chloroform, dibromochloromethane, dichlorobromomethane, tetrachloroethylene, trichloroethylene, trihalomethanes (THMs)\*, vinyl chloride

##### Highly mineralised mineral water

**BTEX:** benzene, toluene, total xylenes, xylene ortho, xylene para + xylene meta, ethylbenzene

**VOC:** 1,2-dichloroethane, bromoform, chloroform, dibromochloromethane, dichlorobromomethane, tetrachloroethylene, trichloroethylene, trihalomethanes (THMs)\*, vinyl chloride

\*THM (= trihalomethanes): sum of contents in chloroform + bromoform + dichlorobromomethane + dibromochloromethane.

#### PARTICULARITIES

The first proficiency test will concern non-atypical mineral waters and carbogaseous waters.  
The second proficiency test will concern non-atypical mineral waters and highly mineralised waters.

**'Health approval'**: this specific programme provides **concentration levels appropriate for atypical and non-atypical mineral waters**.