

AGLAE 2024

PROFICIENCY TESTING SCHEME CATALOGUE

Sampling – *in situ* measurements



AGLAE Association

Parc des Pyramides
427 rue des Bourreliers
59320 Hallennes lez Haubourdin
France

☎ +33 (0)3 20 16 91 40

www.association-aglae.fr

contact@association-aglae.fr

New tests

New programmes in the catalogue

Sampling and *in situ* measurements

- ✓ 101D Sampling using automatic sampler in treatment plant - Creuse

List of PTS

Sampling and *in situ* measurements

100A-C <i>In situ</i> measurements and sampling in different types of waters - Nord - Rhône
101A-C Sampling using automatic samplers in treatment plant - Nord - Rhône
100D <i>In situ</i> measurements and sampling in different types of waters - Creuse
101D Sampling using automatic samplers in treatment plant - Creuse
102D Flowmetry - Creuse

Caption



This logo shows that the programme is accredited by LABORATORIES section in compliance with ISO/IEC 17043.

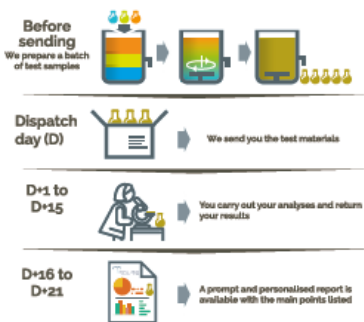
Participate in AGLAE's External Quality Control



A WAY OF WORKING THAT PROVIDES YOU WITH THE HIGHEST STANDARD OF RESULTS WITH CONFIDENTIALITY AND IMPARTIALITY

Each step of the way, AGLAE is there supporting you.

REGISTRATIONS FOR PROFICIENCY TESTING ARE DONE KNOWING THE WHOLE PROCESS, WITH A DETAILED AND RIGOUROUS SCHEDULE

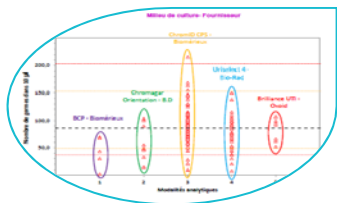


- ✓ The number of evaluations per year for each parameter is specified in the catalogue, concentration levels and stabilisation are available on request.
- ✓ AGLAE uses "express" shipments for your samples and makes sure of their distribution to your laboratory.
- ✓ A sufficient delay to analyse and the report the results.
- ✓ Via your member area, **enter your results and find instructions, assigned codes, reports, summaries of your results, certificate of participation...**

THE OPTIMISATION OF RISK MANAGEMENT FOR YOUR LABORATORY



- You have a better visibility of potential anomalies through:
- ✓ An appropriate test design (duplicate samples, repeated measurements),
 - ✓ A large number of participants: around 200 laboratories in the field of 'base' microbiology and 'base' physico-chemical analyses.



- AGLAE's detailed study:
- ✓ Influence of the analytical methods, manufacturers (equipment and consumables)... factors that we study to help you improve the quality of your analyses,
 - ✓ For waters intended for medical use and water microbiology, estimation of your own uncertainties in microbiology,
 - ✓ Check of your uncertainty estimates in chemistry (zeta-score),
 - ✓ A report validated by experts of the field and personalised for most tests.

ATTRACTIVE DISCOUNTS, PAYMENT CONDITIONS MADE EASIER

- Choose among the various programmes and benefit from discounts up to 15%,
- A possible payment in 2 or 3 folds depending on the amount your participation.
- Payment possible by cheque (in €), bank transfer, credit card on <https://www.helloasso.com/associations/a-g-l-a-e/paiements/aglae>

Amount of your invoice (excluding transport cost)	Discount
3000 ≤ Amount < 6000 € excl. VAT	5%
6000 ≤ Amount < 9000 € excl. VAT	10%
Amount ≥ 9000 € excl. VAT	15%

Additional services



ADDITIONAL TEST SAMPLES TO TEST ANOTHER METHOD, EVALUATE A TECHNICIAN

- ✓ Test samples available for almost all the tests at half price.
- ✓ Besides your usual distribution, you receive one (or several) additional parcel(s).
- ✓ The results of these samples are not statistically processed by AGLAE but for most tests you get a sheet **in your results file** where to **calculate your z-score**. Note that this sheet can also be used in case of unit error, incorrect results' report, etc.

⇒ Check the **list of samples and their price on your Member Area** (Downloads / Catalogues) and contact us to receive a quote. These additional samples need to be ordered after you registration for the test and before the shipment.



QUALITY CONTROL MATERIALS FOR YOUR MONITORING AND IMPROVEMENT OF YOUR ANALYTICAL PERFORMANCE

- ✓ Materials coming from the **solid matrices tests: sediments, sludge, polluted sites and soils**.
- ✓ Purchased at any time during the year and delivered with a certificate presenting the precision values obtained during the test (assigned value and uncertainties).

⇒ Check the **list of materials, prices and available quantities on your Member Area** (Downloads / Catalogues) and contact us to receive a quote.

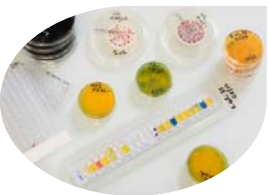


TRAINING SESSIONS IN MICROBIOLOGY: ONE TOPIC POSSIBLY PROVIDED IN ENGLISH

Two-day on-line session to become operational for:

- ✓ Characterising a microbiological method according to ISO 13843 in order to validate it

⇒ *Should you be interested in such a session, please get back to us.*



CUSTOMIZED SERVICE: 'PERFORMANCE CHARACTERISTICS OF MICROBIOLOGICAL METHODS'

Do you need to characterise specific methods?

AGLAE can provide you support to establish methods performance characteristics, in conformity with ISO 13843*. Benefit from AGLAE's technical and statistical experience to validate your microbiological method.

* *Water quality — Requirements for establishing performance characteristics of quantitative microbiological methods*

⇒ *Should you have such needs, contact us to study your request together and issue a quote.*



SUMMARY OF YOUR RESULTS FOR WATER MICROBIOLOGY AND WATER FOR MEDICAL USE TESTS

Gather at any time your results and performance: for a selected period, your results are grouped in an Excel file; this is a tool to support you in your Internal Quality Control, your audits...

PROGRAMMES 100A AND 100C: *IN SITU* MEASUREMENTS AND SAMPLING IN DIFFERENT TYPES OF WATER

€ 809 excl. VAT – price for the report of one series of results

From 8 participants per interlaboratory comparison in 2024 - EXPERIENCE: 7 YEARS

- 2 possible locations in France:
 - ✓ 24M100A.1 - Nord – April/May 2024
 - ✓ 24M100C.1 – Rhône - June 2024



- Possibility to combine the programmes:
 - ✓ 101A and 100A
 - ✓ 101C and 100C
- *In situ* measurements:
 - ✓ In several types of water:
 - Nord: bathing water, river water and swimming pool water
 - Rhône: bathing water, river water
 - ✓ Parameters for bathing waters and river waters*: pH, conductivity at 25°C, dissolved oxygen, turbidity, temperature, Secchi disc transparency, REDOX potential. Other parameters may be provided depending on the locations.
 - ✓ Parameters for swimming pool waters: pH, temperature, free chlorine and total chlorine.
- Sampling of surface water and/or bathing water:
 - ✓ Analyses by a third party: microbiological parameters* (intestinal enterococci, *E. coli*, ...) and/or chemical* (suspended matters, nitrates, organic carbon, total phosphorus, total calcium, micropollutants potentially present...)

* This list will be adapted according to the characteristics of the waters of the selected locations.

PARTICULARITIES

- ✓ Come with the usual sampling equipment
- ✓ Test conducted for a minimum of 8 participants per location, limited number of places
- ✓ Exact dates and addresses communicated at a later stage
- ✓ **Test documents of these Proficiency Testing Schemes are not translated into English.**

PROGRAMMES 101A AND 101C : SAMPLING USING AUTOMATIC SAMPLERS IN TREATMENT PLANT

€ 809 excl. VAT - price for the report of one series of results

From 8 participants per interlaboratory comparison in 2024 -
EXPERIENCE: 5 YEARS



- 2 possible locations in France:
 - ✓ 24M101A.1- Nord – April/May 2024
 - ✓ 24M101C.1 - Rhône – June 2024
- Possibility to combine the programmes:
 - ✓ 101A and 100A
 - ✓ 101C and 100C

- **Measurements on reconstituted sample, on-site:**
Parameters*: pH, conductivity, dissolved oxygen, turbidity. Other parameters may be provided.
- **In situ measurements:**
Parameter: temperature.
- **Sampling:**
Analyses by a third party: chemical parameters* (suspended matters, ST-CDO, ammonium, Total Organic Carbon, micropollutants potentially present...)
- **New in 2024:** evaluation of the total volume flowed over 24 hours.

** This list will be adapted according to the characteristics of the waste waters.*

PARTICULARITIES

- ✓ Come with the usual sampling equipment
- ✓ Test conducted for a minimum of 8 participants. Limited number of places
- ✓ Exact dates and addresses communicated at a later stage
- ✓ **Test documents of these Proficiency Testing Schemes are not translated into English.**

PROGRAMME 100D: *IN SITU* MEASUREMENTS AND SAMPLING IN DIFFERENT TYPES OF WATER - CREUSE

€ 809 excl. VAT - price for the report of one series of results

From 8 participants per interlaboratory comparison in 2024 – EXPERIENCE: 7 YEARS



- **24M100D.1 - Creuse - October 2024**
- **In situ measurements:**
 - ✓ **In several types of water:** bathing water, river water and swimming pool water.
 - ✓ **Parameters for bathing waters and river waters*:** pH, conductivity at 25°C, dissolved oxygen, turbidity, temperature, Secchi disc transparency, REDOX potential. Other parameters may be provided depending on the location.
 - ✓ **Parameters for swimming pool waters*:** pH, temperature, free chlorine, total chlorine and isocyanuric acid.
- **Sampling of surface water:**
 - ✓ **Analyses by a third party: microbiological parameters*** (intestinal enterococci, *E. coli*, ...) **and chemical*** (suspended matters, nitrates, organic carbon, total phosphorus, total calcium, ...)

** This list will be adapted according to the characteristics of the waters of the selected places.*

PARTICULARITIES

In partnership with:



- ✓ **Possibility to combine the programmes:** 100D - 101D - 102D
- ✓ Come with the usual sampling equipment
- ✓ Minimum of 8 participants per test, limited number of participants
- ✓ Exact dates and address communicated at a later stage
- ✓ **Test documents of these Proficiency Testing Schemes are not translated into English.**

PROGRAMME 101D: SAMPLING USING AUTOMATIC SAMPLERS IN TREATMENT PLANT - CREUSE

€ 809 excl. VAT - price for the report of one series of results

From 8 participants per interlaboratory comparison in 2024 –
EXPERIENCE: 7 YEARS



➤ **24M101A.1 - Creuse (France) – October 2024**

➤ **Measurements on reconstituted sample, on-site:**

Parameters*: pH, conductivity, dissolved O₂, turbidity. Other parameters may be provided.

➤ **In situ measurements:**

Parameter: temperature

➤ **Sampling:**

Analyses by a third party: chemical parameters* (suspended matters, ST-DCO, ammonium, Total Organic Carbon, nitrates, micropollutants potentially present, ...)

** This list will be adapted according to the characteristics of the waste waters.*

PARTICULARITIES

In partnership with:



- ✓ **Possibility to combine the programmes:** 100D - 101D - 102D
- ✓ Come with the usual sampling equipment
- ✓ Test conducted for a minimum of 8 participants. Limited number of participants
- ✓ Exact dates and address communicated at a later stage
- ✓ **Test documents of these Proficiency Testing Schemes are not translated into English.**

PROGRAMME 102D: FLOWMETRY - CREUSE



€ 311 excl. VAT - price for the report of one series of results

From 8 participants per interlaboratory comparison in 2024 - EXPERIENCE: 4 YEARS

➤ 24M102D.1 - La Souterraine (Creuse - France) - October 2024

➤ Several levels of flow on an open channel

PARTICULARITIES

In partnership with:



- ✓ Possibility to combine the programmes: 100D - 101D - 102D
- ✓ Come with the usual sampling equipment
- ✓ Test conducted for a minimum of 8 participants. Limited number of participants
- ✓ Exact dates and addresses communicated at a later stage
- ✓ **The test documents of these Proficiency Testing Schemes are not translated into English.**