

AGLAE 2025

PROFICIENCY TESTING SCHEME CATALOGUE

BIOLOGY, ECOTOXICOLOGY



AGLAE Association

Parc des Pyramides
427 rue des Bourreliers
59320 Hallennes lez Haubourdin
France

☎ +33 (0)3 20 16 91 40

www.association-aglae.fr

contact@association-aglae.fr

PTS - Biology, ecotoxicology

12	Macroinvertebrates of running waters
13	Ecotoxicology
16	Biological Diatom Index
34	Protozoans in fresh waters

Programmes' description

One programme includes from 1 to 4 proficiency tests (= rounds).

Prices specified in the catalogue are for the complete programme, which corresponds to several rounds most of the time.

When purchasing a complete programme, the price per test is lower.

Content

For each programme's description, you will find the technical content of the test : volumes, parameters, matrices, dispatch month...

The concentration levels and stabilisation modalities of the samples are available on request.

The samples' dispatch months are given for information only.

Transport costs depend on the destination and tests selected within the programmes; contact us to get a quote.

Our aim is to prepare materials as close as possible to the samples analysed in routine: the contamination levels can therefore be very low or very high.

➔ **Our concentration levels are available on request.**

Caption



This logo shows that the programme is accredited by LABORATORIES section in compliance with ISO/IEC 17043.

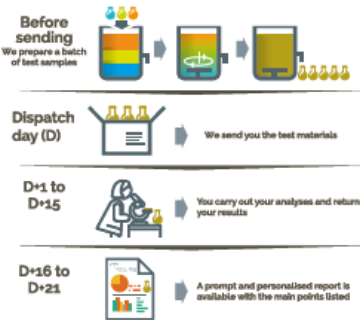
Participate in AGLAE's External Quality Control



A WAY OF WORKING THAT PROVIDES YOU WITH THE HIGHEST STANDARD OF RESULTS WITH CONFIDENTIALITY AND IMPARTIALITY

Each step of the way, AGLAE is there supporting you.

REGISTRATIONS FOR PROFICIENCY TESTING ARE DONE KNOWING THE WHOLE PROCESS, WITH A DETAILED AND RIGOROUS SCHEDULE

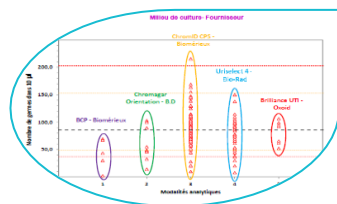


- ✓ The number of evaluations per year for each parameter is specified in the catalogue, concentration levels and stabilisation are available on request.
- ✓ AGLAE uses "express" shipments for your samples and makes sure of their distribution to your laboratory.
- ✓ A sufficient delay to analyse and the report the results.
- ✓ Via your member area, **enter your results and find instructions, assigned codes, reports, summaries of your results, certificate of participation...**

THE OPTIMISATION OF RISK MANAGEMENT FOR YOUR LABORATORY



- You have a better visibility of potential anomalies through:
- ✓ An appropriate test design (duplicate samples, repeated measurements),
 - ✓ A large number of participants: around 200 laboratories in the field of 'base' microbiology and 'base' physico-chemical analyses.



- AGLAE's detailed study:
- ✓ Influence of the analytical methods, manufacturers (equipment and consumables)... factors that we study to help you improve the quality of your analyses,
 - ✓ For waters intended for medical use and water microbiology, estimation of your own uncertainties in microbiology,
 - ✓ Check of your uncertainty estimates in chemistry (zeta-score),
 - ✓ A report validated by experts of the field and personalised for most tests.

ATTRACTIVE DISCOUNTS, PAYMENT CONDITIONS MADE EASIER

- Choose among the various programmes and benefit from discounts up to 15%,
- A possible payment in 2 or 3 folds depending on the amount your participation.
- Payment possible by cheque (in €), bank transfer, credit card on <https://www.helloasso.com/associations/a-g-l-a-e/paiements/aglae>

Amount of your invoice (excluding transport cost)	Discount
3000 ≤ Amount < 6000 € excl. VAT	5%
6000 ≤ Amount < 9000 € excl. VAT	10%
Amount ≥ 9000 € excl. VAT	15%

Additional services



ADDITIONAL TEST SAMPLES TO TEST ANOTHER METHOD, EVALUATE A TECHNICIAN

- ✓ Test samples available for almost all the tests at half price.
- ✓ Besides your usual distribution, you receive one (or several) additional parcel(s).
- ✓ The results of these samples are not statistically processed by AGLAE but for most tests you get a sheet **in your results file** where to **calculate your z-score**. Note that this sheet can also be used in case of unit error, incorrect results' report, etc.

⇒ Check the **list of samples and their price on your Member Area** (Downloads / Catalogues) and contact us to receive a quote. These additional samples need to be ordered after you registration for the test and up to 2 weeks before the shipment.



QUALITY CONTROL MATERIALS FOR YOUR MONITORING AND IMPROVEMENT OF YOUR ANALYTICAL PERFORMANCE

- ✓ Materials coming from the **solid matrices tests: sediments, sludge, polluted sites and soils**.
- ✓ Purchased at any time during the year and delivered with a certificate presenting the precision values obtained during the test (assigned value and uncertainties).

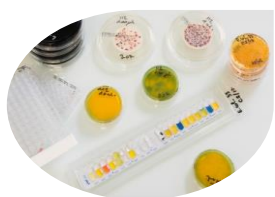
⇒ Check the **list of materials, prices and available quantities on your Member Area** (Downloads / Catalogues) and contact us to receive a quote.



TRAINING SESSIONS IN MICROBIOLOGY: ONE TOPIC POSSIBLY PROVIDED IN ENGLISH

Two-day on-line session to become operational for:

- ✓ Characterising a microbiological method according to ISO 13843 in order to validate it
- ⇒ *Should you be interested in such a session, please get back to us.*



CUSTOMIZED SERVICE: 'PERFORMANCE CHARACTERISTICS OF MICROBIOLOGICAL METHODS'

Do you need to characterise specific methods?

AGLAE can provide you support to establish methods performance characteristics, in conformity with ISO 13843*. Benefit from AGLAE's technical and statistical experience to validate your microbiological method.

* *Water quality — Requirements for establishing performance characteristics of quantitative microbiological methods*

⇒ *Should you have such needs, contact us to study your request together and issue a quote.*



SUMMARY OF YOUR RESULTS FOR WATER MICROBIOLOGY AND WATER FOR MEDICAL USE TESTS

Gather at any time your results and performance: for a selected period, your results are grouped in an Excel file; this is a tool to support you in your Internal Quality Control, your audits...

PROGRAMME 12: MACROINVERTEBRATES OF RUNNING WATERS



€ 766 excl. VAT - total amount for 1 test (excluding transport costs)

42 participants in 2024 – EXPERIENCE: 15 YEARS

1 SHIPMENT AVAILABLE / YEAR

Month	1	2	3	4	5	6	7	8	9	10	11	12
Test									25M12.1			
Matrix									Habitation of running waters			

Parameters to analyse

Faunal list according to NF T90-350
and/or NF T90-388
and, as an option, calculation of IBGN indexes,
MCPE12 (Code Sandre 5912) and/or
I2M2 (Code Sandre 7613)
(no sampling step)

PARTICULARITIES



Fixation reagent: ethanol

Registration deadline: 7 May 2025

Laboratories wishing a second expertise for some singular taxa highlighted during the statistical processing will be able to send them back to AGLAE. To do so, participants will be contacted as soon as the review is issued to specify how to send the concerned taxa back.

This second expertise will allow a better consideration of the profile of singular laboratories for a possible re-ranking of analytical performance.

The test documents of this Proficiency Testing Scheme are not translated into English.

PROGRAMME 13: ECOTOXICOLOGY



€ 510 excl. VAT - total amount for 2 tests (excluding transport costs)

30 participants in 2024 – EXPERIENCE > 25 YEARS



Need to test another method, evaluate your staff?

Order **additional test samples** (parcel in its entirety): € 130 excl. VAT (excluding transport costs)

2 SHIPMENTS AVAILABLE / YEAR - REFRIGERATED PARCEL

Month	1	2	3	4	5	6	7	8	9	10	11	12
Test			25M13.1						25M13.2			
Matrix			Fresh and waste waters						Fresh and waste waters			

Parameters to analyse for each shipment

"Daphnia" test:
determination of the inhibition of the mobility of
Daphnia magna Straus – acute toxicity test

PARTICULARITIES



The determination of the inhibitory effect of water samples on the light emission of *Vibrio fischeri* (luminescent bacteria test - "Microtox" ^[1] test) can also be carried out on these samples. Data statistical treatment may be performed if the number of participants' results is sufficient.

^[1] parameter not covered by accreditation (see general conditions of registration)

PROGRAMME 16: BIOLOGICAL DIATOM INDEX



€ 307 excl. VAT - total amount for 1 test (excluding transport costs)

26 participants in 2024 – EXPERIENCE > 10 YEARS

1 SHIPMENT / YEAR												
Month	1	2	3	4	5	6	7	8	9	10	11	12
Test										25M16.1		
Matrix										Running water		

Parameters to analyse

Floristic list according to NF T90-354.

PARTICULARITIES



Fixation reagent: ethanol.

Registration deadline: 28 May 2025

Transmission of results via Omnidia software: our Biology data processing team will access the data of your laboratory to perform the statistical processing.

Indexes (biological diatom index, pollution-sensitivity index and for information only Rott TI) will be calculated by AGLAE via OMNIDIA software.

Photographic prints of 10 remarkable species will be included in the test report.



Assessment of several technicians is possible: referent results and additional results can be reported.

PROGRAMME 34: PROTOZOANS IN FRESH WATERS

Test materials are suitable for checking analyses in public distribution water and non-atypical natural mineral waters.



€ 675 excl. VAT - total amount for 2 tests (excluding transport costs)

20 participants in 2024 - EXPERIENCE > 15 YEARS



Need to test another method, evaluate your staff?

Order **additional test samples** (parcel in its entirety): € 170 excl. VAT (excluding transport costs)

2 SHIPMENTS AVAILABLE / YEAR - REFRIGERATED PARCEL

Month	1	2	3	4	5	6	7	8	9	10	11	12
Test				25M34.1							25M34.2	
Matrix				Clean water							Clean water	

Parameters to analyse for each shipment

Giardia cysts (total)
 Giardia cysts (healthy*)
 Cryptosporidium oocysts (total)
 Cryptosporidium oocysts (healthy*)

PARTICULARITIES

* Optional: numeration of healthy Giardia cysts and Cryptosporidium oocysts (blue nuclei after DAPI staining according to French standard NF T90-455).

With one of the 2 tubes, only one analysis of the total concentrate has to be carried out by I.M.S. reconcentration, staining, identification and enumeration.

The second tube of concentrate will have to be re-suspended in 10 litres of drinking water. A complete analysis will be carried out on this 10 litres sample (complete analysis: filtration, concentration, staining, identification and enumeration).