

AGLAE 2025
PROFICIENCY TESTING SCHEME CATALOGUE
METALS IN WATERS



AGLAE Association

Parc des Pyramides
427 rue des Bourreliers
59320 Hallennes lez Haubourdin
France

☎ +33 (0)3 20 16 91 40

www.association-aglae.fr

contact@association-aglae.fr

PTS Metals in waters

Fresh waters
3A Metals in fresh waters
3G Additional metals in fresh waters
3D Cr ⁶⁺ in waters
Atypical and non-atypical mineral waters
3C Metals in non-atypical natural mineral waters
3E Metals in sparkling waters
3F Metals in highly mineralised mineral waters
Saline waters
7 Metals in saline waters
Waste waters
3B Metals in waste waters
3D Cr ⁶⁺ in waters

Glossary of the matrices used

Name of the matrix for water chemistry		Below the matrices that can be used, alone or mixed, to comply with the representativity of the specified matrix				
		public drinking waters	bottled waters	reverse osmosis waters	deionised waters	surface waters
Natural mineral waters						
Non-atypical*			x still (dry residue at 180°C<1500 mg/L)			
Atypical	carbo-gaseous		x gaseous (CO ₂ >250 mg/L)	x regasified (CO ₂ >250 mg/L)		
	highly mineralised		x still (dry residue at 180°C>1500 mg/L)			
Fresh waters						
Non-atypical natural mineral waters*			x still (dry residue at 180°C<1500 mg/L)			
Natural waters						x
Clean waters		x	x	x	x	x (clear)

For more information on atypical waters, check the following document: [ANSES/LHN/REF-CSE - Version 3](#) (in French)

* For some parameters in non-atypical natural mineral waters, specific programmes exist (3C, 92) with concentration levels different from those in fresh waters.

Name of the matrix for water chemistry	Below the matrices that can be used, alone or mixed, to comply with the representativity of the specified matrix		
	Waste waters from urban WWTP	Estuary water, costal water	Synthetic waters
Waste waters	x		x
Saline and brackish waters		x	x

WWTP: Waste Water Treatment Plant

Additional services



ADDITIONAL TEST SAMPLES TO TEST ANOTHER METHOD, EVALUATE A TECHNICIAN

- ✓ Test samples available for almost all the tests at half price.
- ✓ Besides your usual distribution, you receive one (or several) additional parcel(s).
- ✓ The results of these samples are not statistically processed by AGLAE but for most tests you get a sheet **in your results file** where to **calculate your z-score**. Note that this sheet can also be used in case of unit error, incorrect results' report, etc.

⇒ Check the **list of samples and their price on your Member Area** (Downloads / Catalogues) and contact us to receive a quote. These additional samples need to be ordered after you registration for the test and up to 2 weeks before the shipment.



QUALITY CONTROL MATERIALS FOR YOUR MONITORING AND IMPROVEMENT OF YOUR ANALYTICAL PERFORMANCE

- ✓ Materials coming from the **solid matrices tests: sediments, sludge, polluted sites and soils**.
- ✓ Purchased at any time during the year and delivered with a certificate presenting the precision values obtained during the test (assigned value and uncertainties).

⇒ Check the **list of materials, prices and available quantities on your Member Area** (Downloads / Catalogues) and contact us to receive a quote.

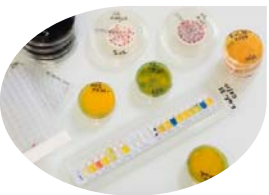


TRAINING SESSIONS IN MICROBIOLOGY: ONE TOPIC POSSIBLY PROVIDED IN ENGLISH

Two-day on-line session to become operational for:

- ✓ Characterising a microbiological method according to ISO 13843 in order to validate it

⇒ *Should you be interested in such a session, please get back to us.*



CUSTOMIZED SERVICE: 'PERFORMANCE CHARACTERISTICS OF MICROBIOLOGICAL METHODS'

Do you need to characterise specific methods?

AGLAE can provide you support to establish methods performance characteristics, in conformity with ISO 13843*. Benefit from AGLAE's technical and statistical experience to validate your microbiological method.

* *Water quality — Requirements for establishing performance characteristics of quantitative microbiological methods*

⇒ *Should you have such needs, contact us to study your request together and issue a quote.*



SUMMARY OF YOUR RESULTS FOR WATER MICROBIOLOGY AND WATER FOR MEDICAL USE TESTS

Gather at any time your results and performance: for a selected period, your results are grouped in an Excel file; this is a tool to support you in your Internal Quality Control, your audits...

Programmes' description

One programme includes from 1 to 4 proficiency tests (= rounds).

Prices specified in the catalogue are for the complete programme, which corresponds to several rounds most of the time.

When purchasing a complete programme, the price per test is lower.

Content

For each programme's description, you will find the technical content of the test : volumes, parameters, matrices, dispatch month...

The concentration levels and stabilisation modalities of the samples are available on request.

The samples' dispatch months are given for information only.

Transport costs depend on the destination and tests selected within the programmes; contact us to get a quote.

Our aim is to prepare materials as close as possible to the samples analysed in routine: the contamination levels can therefore be very low or very high.

➔ **Our concentration levels are available on request.**

Caption



This logo shows that the programme is accredited by LABORATORIES section in compliance with ISO/IEC 17043.

PROGRAMME 3A: METALS IN FRESH WATERS

Test materials are suitable for the check of analyses in clear freshwaters, public drinking waters and non-atypical spring waters.



€ 580 excl. VAT -total amount for 3 tests (excluding transport costs)

137 participants in 2024 – EXPERIENCE > 30 YEARS



Need to test another method, evaluate your staff?

Order **additional test samples** (parcel in its entirety): € 100 excl. VAT (excluding transport costs)

3 SHIPMENTS AVAILABLE / YEAR

Month	1	2	3	4	5	6	7	8	9	10	11	12
Test	25M3A.1					25M3A.2					25M3A.3	
Matrix	Clean water					Clean water					Clean water	

Parameters to analyse

(implemented twice during the year and in 3 deliveries)

25M3A.1

Al, Ba, Be, Cd, Co, Cr, Fe, Li, Mn, Mo, Ni, Pb, S, Sr, Ti, U, V, Zn

Ag

Hg

25M3A.2

Al, As, B, Be, Bi, Cd, Cu, Fe, Mo, Pb, S, Sb, Se, Sn, Te, Ti, Tl, W, Zr

Ce, Ga, Gd, La

Hg

25M3A.3

As, B, Ba, Bi, Co, Cr, Cu, Li, Mn, Ni, Sb, Se, Sn, Sr, Te, Tl, U, V, W, Zn, Zr

Ce, Ga, Gd, La

Ag

PARTICULARITIES

For all the parameters, the method used should enable to measure the total content of this element.



Other recommended proficiency tests:

↪ Programme 3G 'Additional metals in fresh waters'

↪ Programme 3C 'Metals in non-atypical natural mineral waters' (concentration levels appropriate for non-atypical mineral waters)

PROGRAMME 3G: ADDITIONAL METALS IN FRESH WATERS

Test materials are suitable for the check of analyses in clear freshwaters, public drinking waters and non-atypical spring waters

€ 151 excl. VAT - total amount for 1 test (excluding transport costs)

11 participants in 2024 – EXPERIENCE: 1 YEAR



Need to test another method, evaluate your staff?

Order **additional test samples** (parcel in its entirety): **€ 80 excl. VAT** (excluding transport costs)

1 SHIPMENT / YEAR

Month	1	2	3	4	5	6	7	8	9	10	11	12
Test Matrix								25M3G.1 Clean water				

Parameters to analyse

Cs, In, Pd, Pt, Rb

PARTICULARITIES

For all the parameters, the method used should enable to measure the total content of this element.



Other recommended proficiency tests:

- ↪ Programme 3A 'Metals in fresh waters'
- ↪ Programme 3C 'Metals in non-atypical natural mineral waters' (concentration levels appropriate for non-atypical mineral waters)

PROGRAMME 3D: HEXAVALENT CHROMIUM IN WATERS

Clean and natural waters: the materials are suitable for the check of analyses in fresh waters, public drinking waters, spring waters and non-atypical natural mineral waters.



€ 161 excl. VAT - total amount for 4 tests (excluding transport costs)

84 participants in 2024 - EXPERIENCE 20 YEARS



Need to test another method, evaluate your staff?

Order **additional test samples** (parcel in its entirety): **€ 20 excl. VAT** (excluding transport costs)

4 SHIPMENTS AVAILABLE / YEAR - REFRIGERATED PARCEL

Month	1	2	3	4	5	6	7	8	9	10	11	12
Test	25M3D.1			25M3D.2				25M3D.3			25M3D.4	
Matrix	Waste water			Clean water				Waste water			Natural water	

Parameters to analyse for each shipment

Cr⁺⁶

PROGRAMME 3C: METALS IN NON-ATYPICAL NATURAL MINERAL WATERS

Non-atypical natural mineral waters: flat mineral water with dry residue content at 180°C < 1500 mg/L



€ 267 excl. VAT - total amount for 2 tests (excluding transport costs)

33 participants in 2024 - EXPERIENCE 10 YEARS



Need to test another method, evaluate your staff?

Order **additional test samples** (parcel in its entirety): € 70 excl. VAT (excluding transport costs)

2 SHIPMENTS AVAILABLE / YEAR												
Month	1	2	3	4	5	6	7	8	9	10	11	12
Test	25M3C.1					25M3C.2						
Matrix	Flat mineral water					Flat mineral water						

Parameters to analyse for each shipment
Al, As, B, Ba, Be, Cd, Cr, Cu, Fe, Li, Mn, Ni, Pb, Sb, Se, Sr, U, Zn
Hg

PARTICULARITIES
<p>For all the parameters, the method used should enable to measure the total content of the element.</p> <p>‘Health approval’: this specific programme provides concentration levels appropriate for non-atypical mineral waters.</p>

PROGRAMME 3E: METALS IN SPARKLING WATERS

Carbogaseous waters: CO₂ >250 mg/L



€ 193 excl. VAT – total amount for 1 test (excluding transport costs)

22 participants in 2024 – EXPERIENCE > 5 YEARS



Need to test another method, evaluate your staff?

Order **additional test samples** (parcel in its entirety): € 100 excl. VAT (excluding transport costs)

1 SHIPMENT / YEAR

Month	1	2	3	4	5	6	7	8	9	10	11	12
Test		25M3E.1										
Matrix		Carbogaseous water										

Parameters to analyse

Al, As, B, Ba, Be, Cd, Cr, Cu, Fe, Li, Mn, Ni, Pb, Sb, Se, Sr, U, Zn

Hg

PARTICULARITIES

For all the parameters, the method used must enable to measure the total content of this element.



Other recommended proficiency test:

- ↪ Programme 90 'Chemical analyses in sparkling waters'
- ↪ Programme 90B 'Dissolved CO₂ in sparkling waters'
- ↪ Programme 93 'Dry residue in atypical natural mineral waters'

PROGRAMME 3F: METALS IN HIGHLY MINERALISED MINERAL WATERS

Highly mineralised waters: flat mineral waters with dry residue content at 180°C > 1500 mg/L



€ 195 excl. VAT - total amount for 1 test (excluding transport costs)

12 participants in 2024 - EXPERIENCE: 5 YEARS



Need to test another method, evaluate your staff?

Order **additional test samples** (parcel in its entirety): € 100 excl. VAT (excluding transport costs)

1 SHIPMENT / YEAR

Month	1	2	3	4	5	6	7	8	9	10	11	12
Test							25M3F.1					
Matrix							Highly mineralised water					

Parameters to analyse

Al, As, B, Ba, Be, Cd, Cr, Cu, Fe, Li, Mn, Ni, Pb, Sb, Se, Sr, U, Zn

Hg

PARTICULARITIES

For all the parameters, the method used must enable to measure the total content of this element.



Other recommended proficiency test:

- ↪ Programme 90A 'Chemical analyses in highly mineralised mineral waters'
- ↪ Programme 93 'Dry residue in atypical natural mineral waters'

PROGRAMME 7: METALS IN SALINE WATERS



€ 151 excl. VAT - total amount for 1 test (excluding transport costs)

17 participants in 2024 – EXPERIENCE > 25 YEARS



Need to test another method, evaluate your staff?

Order **additional test samples** (parcel in its entirety): **€ 80 excl. VAT** (excluding transport costs)

1 SHIPMENT / YEAR

Month	1	2	3	4	5	6	7	8	9	10	11	12
Test					25M7.1							
Matrix					Saline and brackish water							

Parameters to analyse

As, Cd, Cr, Cu, Ni, Pb, Fe, Mn, Zn

Hg

PARTICULARITIES

For all the parameters, the method used should enable to measure the total content of the element.



Other recommended proficiency test:

- ↳ **Programme 6** 'Chemical analyses in saline waters'
- ↳ **Programme 6A** 'Dissolved oxygen in saline waters'

PROGRAMME 3B: METALS IN WASTE WATERS



€ 591 excl. VAT – total amount for 3 tests (excluding transport costs)

111 participants in 2024 - EXPERIENCE 30 YEARS



Need to test another method, evaluate your staff?

Order **additional test samples** (parcel in its entirety): € 100 excl. VAT (excluding transport costs)

3 SHIPMENTS AVAILABLE / YEAR

Month	1	2	3	4	5	6	7	8	9	10	11	12
Test Matrix			25M3B.1 Waste water						25M3B.2 Waste water			25M3B.3 Waste water

Parameters to analyse

(implemented twice during the year and in 3 deliveries)

25M3B.1

Al, As, B, Ba, Cd, Co, Cr, Fe, Li, Mn, Ni, Sn, Te, Ti, Tl, V, W, Zr

Ag, Hg

25M3B.2

As, B, Ba, Be, Bi, Co, Cu, Mn, Mo, Ni, Pb, S, Sb, Se, Sr, Te, U, V, W, Zn

25M3B.3

Al, Be, Bi, Cd, Cr, Cu, Fe, Li, Mo, Pb, S, Sb, Se, Sn, Sr, Ti, Tl, U, Zn, Zr

Ag, Hg

PARTICULARITIES

For all the parameters, the method used should enable to measure the total content of this element.

PROGRAMME 3D: HEXAVALENT CHROMIUM IN WATERS

Clean and natural waters: the materials are suitable for the check of analyses in fresh waters, public drinking waters, spring waters and non-atypical natural mineral waters.



€ 161 excl. VAT - total amount for 4 tests (excluding transport costs)

84 participants in 2024 - EXPERIENCE 20 YEARS



Need to test another method, evaluate your staff?

Order **additional test samples** (parcel in its entirety): **€ 20 excl. VAT** (excluding transport costs)

4 SHIPMENTS AVAILABLE / YEAR - REFRIGERATED PARCEL												
Month	1	2	3	4	5	6	7	8	9	10	11	12
Test	25M3D.1			25M3D.2				25M3D.3			25M3D.4	
Matrix	Waste water			Clean water				Waste water			Natural water	

Parameters to analyse for each shipment
Cr ⁺⁶