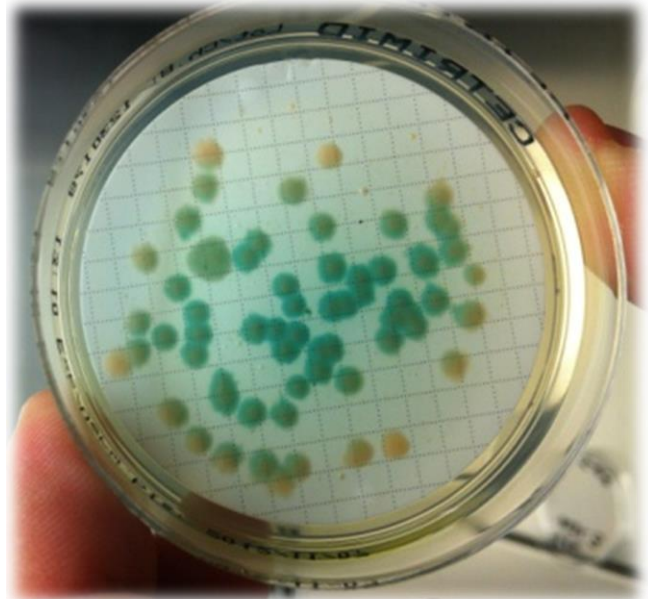
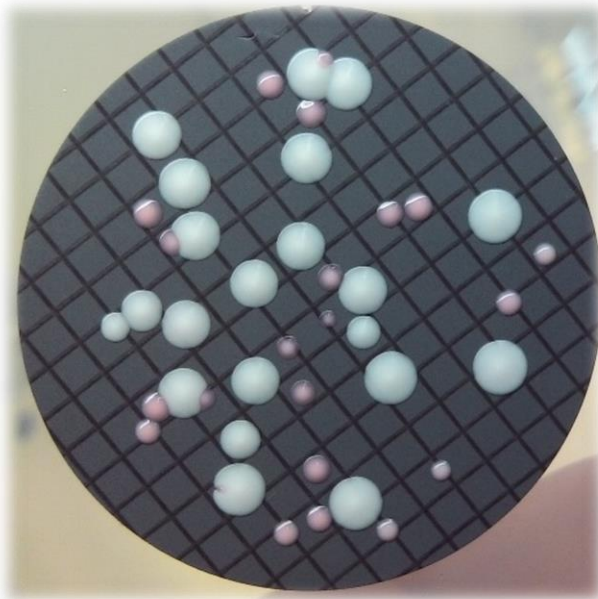
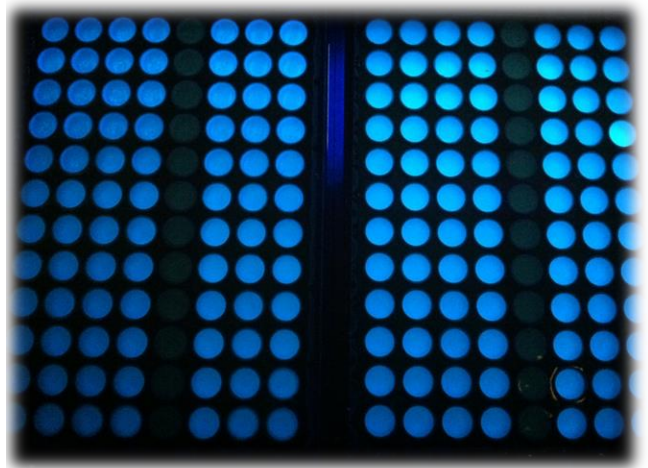


AGLAE 2025

PROFICIENCY TESTING SCHEME CATALOGUE

ENVIRONMENT - COSMETICS



AGLAE Association

Parc des Pyramides
427 rue des Bourreliers
59320 Hallennes lez Haubourdin
France

☎ +33 (0)3 20 16 91 40

www.association-aglae.fr

contact@association-aglae.fr

PTS in the water microbiology field

| |
|--|
| 11 Microbial indicators of faecal contamination by MPN method |
| 30 Microbiology in clean waters |
| 30A Spores of sulfite-reducing anaerobes in fresh surface waters and waste waters |
| 31 <i>Pseudomonas aeruginosa</i> and pathogenic staphylococci in clean waters |
| 31A Pathogenic staphylococci in saline waters |
| 32 <i>Legionella</i> and <i>Legionella pneumophila</i> in clean waters by culture |
| 33 <i>Legionella</i> and <i>Legionella pneumophila</i> in waste waters by culture |
| 35 <i>Legionella</i> and <i>Legionella pneumophila</i> in clean waters by PCR |
| 36 <i>Legionella</i> and <i>Legionella pneumophila</i> in waste waters by PCR |
| 37 <i>Salmonella</i> in fresh waters |
| 38 Yeasts in clean waters |
| 38A Mould in clean waters |
| 39 Vegetative cells and spores of <i>Clostridium perfringens</i> in clean waters |
| 130 Bacteriophages in waters |

Glossary of the matrices used

| Name of the matrix for environmental biology | Below the matrices that can be used, alone or mixed, to comply with the representativity of the specified matrix | | | | | | | | | |
|--|--|----------------|-----------------------------|--------------------------|------------------------------|-----------|---------------------|------------------------------|----------------------|------------------|
| | public drinking waters | bottled waters | waters from rivers or lakes | water from well or drill | waste waters from urban WWTP | sea water | domestic hot waters | water from industrial origin | swimming pool waters | Synthetic waters |
| Bathing freshwaters | | | x | | | | | | | |
| Bathing saline waters | | | | | | x | | | | |
| Saline waters | | | | | | x | | | | x |
| Surface waters Fresh waters | | | x | | | | | | | x |
| Clean waters | x | x | | x | | | x | | x | |
| Waste waters | | | | | x | | | | | x |
| Waste waters (for Legionella tests) | | | x non-filterable | | | | | x | | x |

WWTP: Waste Water Treatment Plant

Participate in AGLAE's External Quality Control



A WAY OF WORKING THAT PROVIDES YOU WITH THE HIGHEST STANDARD OF RESULTS WITH CONFIDENTIALITY AND IMPARTIALITY

Each step of the way, AGLAE is there supporting you.

REGISTRATIONS FOR PROFICIENCY TESTING ARE DONE KNOWING THE WHOLE PROCESS, WITH A DETAILED AND RIGOUROUS SCHEDULE

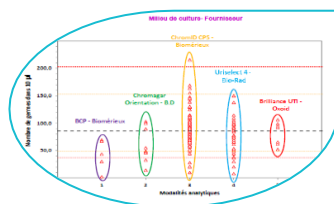


- ✓ The number of evaluations per year for each parameter is specified in the catalogue, concentration levels and stabilisation are available on request.
- ✓ AGLAE uses "express" shipments for your samples and makes sure of their distribution to your laboratory.
- ✓ A sufficient delay to analyse and the report the results.
- ✓ Via your member area, **enter your results and find instructions, assigned codes, reports, summaries of your results, certificate of participation...**

THE OPTIMISATION OF RISK MANAGEMENT FOR YOUR LABORATORY



- You have a better visibility of potential anomalies through:
- ✓ An appropriate test design (duplicate samples, repeated measurements),
 - ✓ A large number of participants: around 200 laboratories in the field of 'base' microbiology and 'base' physico-chemical analyses.



- AGLAE's detailed study:
- ✓ Influence of the analytical methods, manufacturers (equipment and consumables)... factors that we study to help you improve the quality of your analyses,
 - ✓ For waters intended for medical use and water microbiology, estimation of your own uncertainties in microbiology,
 - ✓ Check of your uncertainty estimates in chemistry (zeta-score),
 - ✓ A report validated by experts of the field and personalised for most tests.

ATTRACTIVE DISCOUNTS, PAYMENT CONDITIONS MADE EASIER

- Choose among the various programmes and benefit from discounts up to 15%,
- A possible payment in 2 or 3 folds depending on the amount your participation.
- Payment possible by cheque (in €), bank transfer, credit card on <https://www.helloasso.com/associations/a-g-l-a-e/paiements/aglae>

| Amount of your invoice (excluding transport cost) | Discount |
|--|------------|
| 3000 ≤ Amount < 6000 € excl. VAT | 5% |
| 6000 ≤ Amount < 9000 € excl. VAT | 10% |
| Amount ≥ 9000 € excl. VAT | 15% |

Additional services



ADDITIONAL TEST SAMPLES TO TEST ANOTHER METHOD, EVALUATE A TECHNICIAN

- ✓ Test samples available for almost all the tests at half price.
- ✓ Besides your usual distribution, you receive one (or several) additional parcel(s).
- ✓ The results of these samples are not statistically processed by AGLAE but for most tests you get a sheet **in your results file** where to **calculate your z-score**. Note that this sheet can also be used in case of unit error, incorrect results' report, etc.

⇒ Check the **list of samples and their price on your Member Area** (Downloads / Catalogues) and contact us to receive a quote. These additional samples need to be ordered after you registration for the test and up to 2 weeks before the shipment.



QUALITY CONTROL MATERIALS FOR YOUR MONITORING AND IMPROVEMENT OF YOUR ANALYTICAL PERFORMANCE

- ✓ Materials coming from the **solid matrices tests: sediments, sludge, polluted sites and soils**.
- ✓ Purchased at any time during the year and delivered with a certificate presenting the precision values obtained during the test (assigned value and uncertainties).

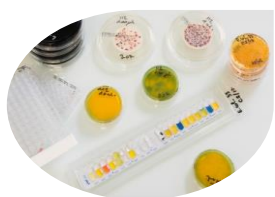
⇒ Check the **list of materials, prices and available quantities on your Member Area** (Downloads / Catalogues) and contact us to receive a quote.



TRAINING SESSIONS IN MICROBIOLOGY: ONE TOPIC POSSIBLY PROVIDED IN ENGLISH

Two-day on-line session to become operational for:

- ✓ Characterising a microbiological method according to ISO 13843 in order to validate it
- ⇒ *Should you be interested in such a session, please get back to us.*



CUSTOMIZED SERVICE: 'PERFORMANCE CHARACTERISTICS OF MICROBIOLOGICAL METHODS'

Do you need to characterise specific methods?

AGLAE can provide you support to establish methods performance characteristics, in conformity with ISO 13843*. Benefit from AGLAE's technical and statistical experience to validate your microbiological method.

* *Water quality — Requirements for establishing performance characteristics of quantitative microbiological methods*

⇒ *Should you have such needs, contact us to study your request together and issue a quote.*



SUMMARY OF YOUR RESULTS FOR WATER MICROBIOLOGY AND WATER FOR MEDICAL USE TESTS

Gather at any time your results and performance: for a selected period, your results are grouped in an Excel file; this is a tool to support you in your Internal Quality Control, your audits...

Programmes' description

One programme includes from 1 to 4 proficiency tests (= rounds).

Prices specified in the catalogue are for the complete programme, which corresponds to several rounds most of the time.

When purchasing a complete programme, the price per test is lower.

Content

For each programme's description, you will find the technical content of the test : volumes, parameters, matrices, dispatch month...

The concentration levels and stabilisation modalities of the samples are available on request.

The samples' dispatch months are given for information only.

Transport costs depend on the destination and tests selected within the programmes; contact us to get a quote.

Our aim is to prepare materials as close as possible to the samples analysed in routine: the contamination levels can therefore be very low or very high.

➔ **Our concentration levels are available on request.**

Caption



This logo shows that the programme is accredited by LABORATORIES section in compliance with ISO/IEC 17043.

PROGRAMME 11: MICROBIAL INDICATORS OF FAECAL CONTAMINATION BY MPN METHOD

Test materials are suitable for the check of analyses in fresh waters, saline and brackish waters and waste waters.



€ 425 excl. VAT - total amount for 4 tests (excluding transport costs)

127 participants in 2024 – EXPERIENCE: 30 YEARS



Need to test another method, evaluate your staff?

Order **additional test samples** (parcel in its entirety): € 55 excl. VAT (excluding transport costs)

| 4 SHIPMENTS AVAILABLE / YEAR - REFRIGERATED PARCEL | | | | | | | | | | | | |
|--|---|---------------|---|---|---|--------------------|---|--------------|---|----|-------------|----|
| Month | 1 | 2 | 3 | 4 | 5 | 6 | 7 | 8 | 9 | 10 | 11 | 12 |
| Test | | 25M11.1 | | | | 25M11.2 | | 25M11.3 | | | 25M11.4 | |
| Matrix | | Surface water | | | | Bathing freshwater | | Saline water | | | Waste water | |

Parameters to analyse in surface water and bathing freshwater

Coliform bacteria,
Escherichia coli, Intestinal enterococci

Parameters to analyse in sea water and waste water

Escherichia coli, Intestinal enterococci

PARTICULARITIES

Coliform bacteria: parameter compatible with (NF EN) ISO 9308-2 and NF T90-413.

***Escherichia coli*:** parameter compatible with (NF EN) ISO 9308-2 and (NF EN) ISO 9308-3.

Intestinal enterococci: parameter compatible with (NF EN) ISO 7899-1 and Enterolert E.

Assessment all methods together (z-score and ranking).

Assessment per methodological group, subject to a sufficient number of results.

PROGRAMME 30: MICROBIOLOGY IN CLEAN WATERS

Test materials are suitable for the check of analyses in public drinking waters, non-atypical natural mineral waters, swimming pool waters, waters for whirlpool baths, waters for multi-jet showers, healthcare waters as well as fresh* waters, waters in health care, pharmaceutical and cosmetic establishments. *Clear fresh waters for the spores of sulfite-reducing anaerobes.



€ 758 excl. VAT - total amount for 4 tests (excluding transport costs)

273 participants in 2024 – EXPERIENCE > 30 YEARS



Need to test another method, evaluate your staff?

Order **additional test samples** (parcel in its entirety): € 95 excl. VAT (excluding transport costs)

4 SHIPMENTS AVAILABLE / YEAR - REFRIGERATED PARCEL

| Month | 1 | 2 | 3 | 4 | 5 | 6 | 7 | 8 | 9 | 10 | 11 | 12 |
|--------|---|---|-------------|---|-------------|---|---|---|-------------|----|----|-------------|
| Test | | | 25M30.1 | | 25M30.2 | | | | 25M30.3 | | | 25M30.4 |
| Matrix | | | Clean water | | Clean water | | | | Clean water | | | Clean water |

Parameters to analyse for each shipment

Culturable micro-organisms at 22°C,
Culturable micro-organisms at 36°C

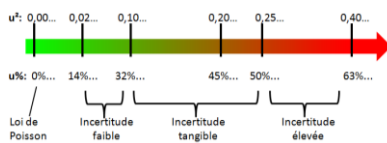
Escherichia coli, coliform bacteria, Intestinal enterococci, spores of sulfite-reducing anaerobes

PARTICULARITIES

Culturable micro-organisms at 22°C and culturable micro-organisms at 36°C: by incorporation.

Coliform bacteria, *Escherichia coli*: parameters compatible with (NF EN) ISO 9308-1 (2000), ISO 9308-1 (2014), ISO 9308-2 (2012) and (NF EN) ISO 9308-2 (2014).

Intestinal enterococci: parameter compatible with (NF EN) ISO 7899-2 and Enterolert DW.



For all the parameters of this programme, uncertainties are calculated and provided to the participants. The indicators are the repeatability uncertainty u_r^2 and the reproducibility uncertainty u_R^2 specific to each participant. The uncertainty evaluated for the whole profession is also presented.

Assessment all methods together (z-score and ranking).

Assessment per methodological group, subject to a sufficient number of results.



Other recommended proficiency tests:

↳ **Programme 30A** 'Spores of sulfite-reducing anaerobes in fresh waters and waste waters'

↳ **Programme 39** 'Vegetative cells and spores of *Clostridium perfringens* in clean water'

↳ **Programme 86** 'Indicator germs by filtration in bacteriologically controlled waters' for the analysis of culturable micro-organisms at 22°C and at 36°C after filtration

PROGRAMME 30A: SPORES OF SULFITE-REDUCING ANAEROBES IN FRESH WATERS AND WASTE WATERS

Test materials are suitable for the check of analyses in fresh waters and in waste waters.



€ 245 excl. VAT - total amount for 4 tests (excluding transport costs)

17 participants in 2024 – EXPERIENCE: 4 YEARS



Need to test another method, evaluate your staff?

Order **additional test samples** (parcel in its entirety): **€ 35 excl. VAT** (excluding transport costs)

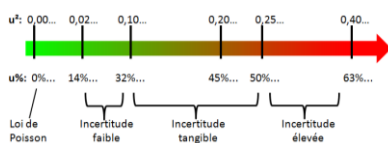
4 SHIPMENTS AVAILABLE / YEAR - REFRIGERATED PARCEL

| Month | 1 | 2 | 3 | 4 | 5 | 6 | 7 | 8 | 9 | 10 | 11 | 12 |
|--------|---|---|-----------------|---|-----------------|---|---|---|-----------------|----|----|-----------------|
| Test | | | 25M30A.1 | | 25M30A.2 | | | | 25M30A.3 | | | 25M30A.4 |
| Matrix | | | Surface water | | Waste water | | | | Surface water | | | Waste water |

Parameters to analyse for each shipment

Spores of sulfite-reducing anaerobes

PARTICULARITIES



For this programme, when the bacterial load enables it, uncertainties are calculated and provided to participants. The indicators are the repeatability uncertainty u^2 and the reproducibility uncertainty uR^2 specific to each participant. The uncertainty evaluated for the whole profession is also presented.



Other recommended proficiency test:

Programme 30 'Microbiology in clean waters'

Programme 39 'Vegetative cells and spores of *Clostridium perfringens* in clean water'

PROGRAMME 31: *PSEUDOMONAS AERUGINOSA* AND PATHOGENIC STAPHYLOCOCCI IN CLEAN WATERS

Test materials are suitable for the check of analyses in public drinking waters, non-atypical natural mineral waters, swimming pool waters, waters for whirlpool baths, waters for multi-jet showers, healthcare waters and bacteriologically controlled waters as well as fresh waters, waters in health care, pharmaceutical and cosmetic establishments.



€ 516 excl. VAT – total amount for 4 tests (excluding transport costs)

226 participants in 2024 – EXPERIENCE: 30 YEARS



Need to test another method, evaluate your staff?

Order **additional test samples** (parcel in its entirety): € 65 excl. VAT (excluding transport costs)

4 SHIPMENTS AVAILABLE / YEAR - REFRIGERATED PARCEL

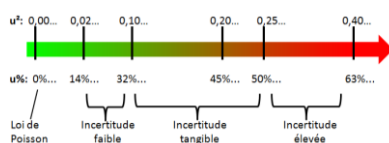
| Month | 1 | 2 | 3 | 4 | 5 | 6 | 7 | 8 | 9 | 10 | 11 | 12 |
|--------|--------------------|---|---|--------------------|---|---|---|---|--------------------|----|----|--------------------|
| Test | 25M31.1 | | | 25M31.2 | | | | | 25M31.3 | | | 25M31.4 |
| Matrix | Clean water | | | Clean water | | | | | Clean water | | | Clean water |

Parameters to analyse for each shipment

Pseudomonas aeruginosa,
pathogenic staphylococci (coagulase positive)

PARTICULARITIES

Pseudomonas aeruginosa: parameter compatible with (NF EN) ISO 16266 and ISO 16266-2.



For this programme, uncertainties are calculated and provided to the participants. The indicators are the repeatability uncertainty u_r^2 and the reproducibility uncertainty u_R^2 specific to each participant. The uncertainty evaluated for the whole profession is also presented.

Assessment all methods together (z-score and ranking).

Assessment per methodological group, subject to a sufficient number of results.



Other recommended proficiency tests:

↳ **Programme 31A** 'Pathogenic staphylococci in saline waters'

PROGRAMME 31A: PATHOGENIC STAPHYLOCOCCI IN SALINE WATERS



€ 196 excl. VAT - total amount for 2 tests (excluding transport costs)

8 participants in 2024 - EXPERIENCE: 3 YEARS



Need to test another method, evaluate your staff?

Order **additional test samples** (parcel in its entirety): € 50 excl. VAT (excluding transport costs)

2 SHIPMENTS AVAILABLE / YEAR - REFRIGERATED PARCEL

| Month | 1 | 2 | 3 | 4 | 5 | 6 | 7 | 8 | 9 | 10 | 11 | 12 |
|--------|---|---|---|-----------------|---|---|---|---|-----------------|----|----|----|
| Test | | | | 25M31A.1 | | | | | 25M31A.2 | | | |
| Matrix | | | | Sea water | | | | | Sea water | | | |

Parameters to analyse for each shipment

pathogenic staphylococci (coagulase positive)

PARTICULARITIES



Other recommended proficiency tests:

↳ Programme 31 '*Pseudomonas aeruginosa* and pathogenic staphylococci in clean waters

PROGRAMME 32: *LEGIONELLA* AND *LEGIONELLA PNEUMOPHILA* IN CLEAN WATERS BY CULTURE

Test materials are suitable for the check of analyses in public drinking waters, domestic hot waters, natural mineral waters for thermal use, swimming pool waters and equivalent, waters from misting systems as well as fresh waters and process waters except coloured and/or unfilterable water requiring centrifugation or following the 'waste water' protocol.



€ 573 excl. VAT - total amount for 3 tests (excluding transport costs)

224 participants in 2024 – EXPERIENCE: 25 YEARS



Need to test another method, evaluate your staff?

Order **additional test samples** (parcel in its entirety): **€ 100 excl. VAT** (excluding transport costs)

3 SHIPMENTS AVAILABLE / YEAR - REFRIGERATED PARCEL

| Month | 1 | 2 | 3 | 4 | 5 | 6 | 7 | 8 | 9 | 10 | 11 | 12 |
|--------|---|----------------|---|---|----------------|---|---|---|---|----------------|----|----|
| Test | | 25M32.1 | | | 25M32.2 | | | | | 25M32.3 | | |
| Matrix | | Clean water | | | Clean water | | | | | Clean water | | |

Parameters to analyse for each shipment

Legionella pneumophila, Legionella

PARTICULARITIES

Refrigerated parcel to favour the reception of similar samples in France and internationally.

Legionella and *Legionella pneumophila*: parameters compatible with NF T90-431 and ISO 11731 (2017) [Matrix A; Procedures 1 and 7; Medium C].

Assessment all methods together (z-score and ranking).

Assessment per methodological group, subject to a sufficient number of results.

PROGRAMME 33: *LEGIONELLA* AND *LEGIONELLA PNEUMOPHILA* IN WASTE WATERS BY CULTURE

Test materials are suitable for the check of analyses in surface waters, in industrial waters, in waters from cooling installations by water dispersion in air flows, in natural waters as well as fresh waters and process waters coloured and/or unfilterable requiring centrifugation or following the 'waste water' protocol.



€ 604 excl. VAT - total amount for 3 tests (excluding transport costs)

122 participants in 2024 - EXPERIENCE > 15 YEARS



Need to test another method, evaluate your staff?

Order **additional test samples** (parcel in its entirety): **€ 105 excl. VAT** (excluding transport costs)

3 SHIPMENTS AVAILABLE / YEAR - REFRIGERATED PARCEL

| Month | 1 | 2 | 3 | 4 | 5 | 6 | 7 | 8 | 9 | 10 | 11 | 12 |
|--------|--------------------|---|---|--------------------|---|---|---|---|---|--------------------|----|----|
| Test | 25M33.1 | | | 25M33.2 | | | | | | 25M33.3 | | |
| Matrix | Waste water | | | Waste water | | | | | | Waste water | | |

Parameters to analyse for each shipment

Legionella pneumophila, Legionella

PARTICULARITIES

Refrigerated parcel to favour the reception of identical samples in France and internationally.

Legionella, Legionella pneumophila: parameters compatible with NF T90-431 and ISO 11731 (2017) [Matrix B; Procedures 1, 8, 9, 10 and 11; Medium C].

PROGRAMME 35:

LEGIONELLA AND LEGIONELLA PNEUMOPHILA IN CLEAN WATERS BY PCR

Test materials are suitable for the check of analyses in public drinking waters, domestic hot waters, natural mineral waters for thermal use, swimming pool waters and equivalent, waters from misting systems as well as fresh waters.



€ 614 excl. VAT - total amount for 2 tests (excluding transport costs)

23 participants in 2024 - EXPERIENCE 15 > YEARS



Need to test another method, evaluate your staff?

Order **additional test samples** (parcel in its entirety): € 155 excl. VAT (excluding transport costs)

2 SHIPMENTS AVAILABLE / YEAR - REFRIGERATED PARCEL

| Month | 1 | 2 | 3 | 4 | 5 | 6 | 7 | 8 | 9 | 10 | 11 | 12 |
|-------------|---|-------------------------------|---|---|---|---|---|---|---|-------------------------------|----|----|
| Test Matrix | | 25M35.1 Clean water | | | | | | | | 25M35.2 Clean water | | |

Parameters to analyse for each shipment

Legionella, Legionella pneumophila

PARTICULARITIES

Legionella, Legionella pneumophila: parameters compatible with NF T90-471 and ISO/TS 12869.

The analysis method used must lead to quantitative results. Presence/absence type results cannot be processed.

PROGRAMME 36:

LEGIONELLA AND LEGIONELLA PNEUMOPHILA IN WASTE WATERS BY PCR

Test materials are suitable for the check of analyses in surface waters, industrial waters, waters for cooling installations by water dispersion in an air flow, natural waters as well as in process waters.



€ 714 excl. VAT - total amount for 2 tests (excluding transport costs)

12 participants in 2024 – EXPERIENCE: 10 YEARS



Need to test another method, evaluate your staff?

Order **additional test samples** (parcel in its entirety): € 180 excl. VAT (excluding transport costs)

2 SHIPMENTS AVAILABLE / YEAR - REFRIGERATED PARCEL

| Month | 1 | 2 | 3 | 4 | 5 | 6 | 7 | 8 | 9 | 10 | 11 | 12 |
|-------------|---|---|---|---|---|------------------------|---|---|---|------------------------|----|----|
| Test Matrix | | | | | | 25M36.1 Waste water | | | | 25M36.2 Waste water | | |

Parameters to analyse for each shipment

Legionella, Legionella pneumophila

PARTICULARITIES

Legionella, Legionella pneumophila: parameters compatible with NF T90-471 and ISO/TS 12869.

The analysis method used must lead to quantitative results. Presence/absence type results cannot be processed.

PROGRAMME 37: SALMONELLA IN FRESH WATERS



€ 141 excl. VAT - total amount for 2 tests (excluding transport costs)

80 participants in 2024 - EXPERIENCE > 15 YEARS



Need to test another method, evaluate your staff?

Order **additional test samples** (parcel in its entirety): € 40 excl. VAT (excluding transport costs)

2 SHIPMENTS AVAILABLE / YEAR - REFRIGERATED PARCEL

| Month | 1 | 2 | 3 | 4 | 5 | 6 | 7 | 8 | 9 | 10 | 11 | 12 |
|--------|---|---|----------------|---|---|---|---|---|---|----|----------------|----|
| Test | | | 25M37.1 | | | | | | | | 25M37.2 | |
| Matrix | | | Clean water | | | | | | | | Surface water | |

Parameters to analyse for each shipment

Salmonella

PARTICULARITIES

Clean water: test materials are suitable for the check of analyses in public drinking waters and non-atypical natural mineral waters.

Surface water: test materials are suitable for the check of analyses in fresh surface waters used for the production of waters intended for human consumption and non-atypical natural mineral waters.

Qualitative analysis: presence / absence.

PROGRAMME 38: YEASTS IN CLEAN WATERS

Test materials are suitable for the check of analyses in public drinking waters, non-atypical natural mineral waters and bacteriologically controlled waters as well as fresh waters, waters in health care, pharmaceutical and cosmetic establishments.



€ 143 excl. VAT - total amount for 2 tests (excluding transport costs)

22 participants in 2024 - EXPERIENCE > 5 YEARS



Need to test another method, evaluate your staff?

Order **additional test samples** (parcel in its entirety): **€ 40 excl. VAT** (excluding transport costs)

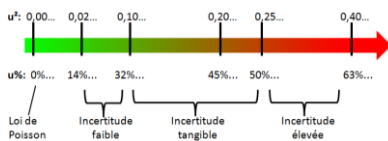
2 SHIPMENTS AVAILABLE / YEAR - REFRIGERATED PARCEL

| Month | 1 | 2 | 3 | 4 | 5 | 6 | 7 | 8 | 9 | 10 | 11 | 12 |
|--------|--------------------|---|---|---|---|--------------------|---|---|---|----|----|----|
| Test | 25M38.1 | | | | | 25M38.2 | | | | | | |
| Matrix | Clean water | | | | | Clean water | | | | | | |

Parameters to analyse for each shipment

Yeasts

PARTICULARITIES



For this programme, uncertainties are calculated and provided to the participants. The indicators are the repeatability uncertainty u_r^2 and the reproducibility uncertainty u_R^2 specific to each participant. The uncertainty evaluated for the whole profession is also presented.

PROGRAMME 38A: MOULD IN CLEAN WATERS

Test materials are suitable for the check of analyses in public drinking waters, non-atypical natural mineral waters and bacteriologically controlled waters as well as fresh waters, waters in health care, pharmaceutical and cosmetic establishments.



€ 196 excl. VAT - total amount for 2 tests (excluding transport costs)

30 participants in 2024 - EXPERIENCE > 5 YEARS



Need to test another method, evaluate your staff?

Order **additional test samples** (parcel in its entirety): € 50 excl. VAT (excluding transport costs)

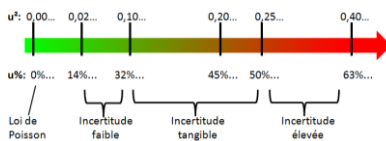
2 SHIPMENTS AVAILABLE / YEAR - REFRIGERATED PARCEL

| Month | 1 | 2 | 3 | 4 | 5 | 6 | 7 | 8 | 9 | 10 | 11 | 12 |
|--------|--------------------|---|---|---|---|--------------------|---|---|---|----|----|----|
| Test | 25M38A.1 | | | | | 25M38A.2 | | | | | | |
| Matrix | Clean water | | | | | Clean water | | | | | | |

Parameters to analyse for each shipment

Mould

PARTICULARITIES



For this programme, uncertainties are calculated and provided to the participants. The indicators are the repeatability uncertainty u_r^2 and the reproducibility uncertainty u_R^2 specific to each participant. The uncertainty evaluated for the whole profession is also presented.

PROGRAMME 39: VEGETATIVE CELLS AND SPORES OF *CLOSTRIDIUM PERFRINGENS* IN CLEAN WATERS

Test materials are suitable for the check of analyses in public drinking waters according to ISO 14189.

New to
catalogue

€ 335 excl. VAT - total amount for 2 tests (excluding transport costs)

15 participants in 2024 – EXPERIENCE: 1 YEAR

2 SHIPMENTS AVAILABLE / YEAR - REFRIGERATED PARCEL

| Month | 1 | 2 | 3 | 4 | 5 | 6 | 7 | 8 | 9 | 10 | 11 | 12 |
|--------|---|---|---|---|---|----------------|---|---|----------------|----|----|----|
| Test | | | | | | 25M39.1 | | | 25M39.2 | | | |
| Matrix | | | | | | Clean water | | | Clean water | | | |

Parameters to analyse for each shipment

Vegetative cells and spores of *Clostridium perfringens*

PARTICULARITIES



You will receive dehydrated materials 'Qualities' in addition to the bottles of clean water (one dehydrated material for each bottle of clean water). Resuspension of the materials have to be carried out following a protocol provided by AGLAE.

Analyses of vegetative cells and spores of *Clostridium perfringens* have to be carried out according to (NF EN) ISO 14189 standard.

PROGRAMME 130: BACTERIOPHAGES IN WATERS

€ 728 excl. VAT - total amount for 2 tests (excluding transport costs)

16 participants in 2024 – EXPERIENCE: 2 YEARS



Need to test another method, evaluate your staff?

Order **additional test samples** (parcel in its entirety): **€ 185 excl. VAT** (excluding transport costs)

2 SHIPMENTS AVAILABLE / YEAR - REFRIGERATED PARCEL

| Month | 1 | 2 | 3 | 4 | 5 | 6 | 7 | 8 | 9 | 10 | 11 | 12 |
|--------|---|---|---|--------------------|---|---|---|---|--------------------|----|----|----|
| Test | | | | 25M130.1 | | | | | 25M130.2 | | | |
| Matrix | | | | Waste water | | | | | Fresh water | | | |

Parameters to analyse for each shipment

Somatic coliphages

F-specific RNA bacteriophages