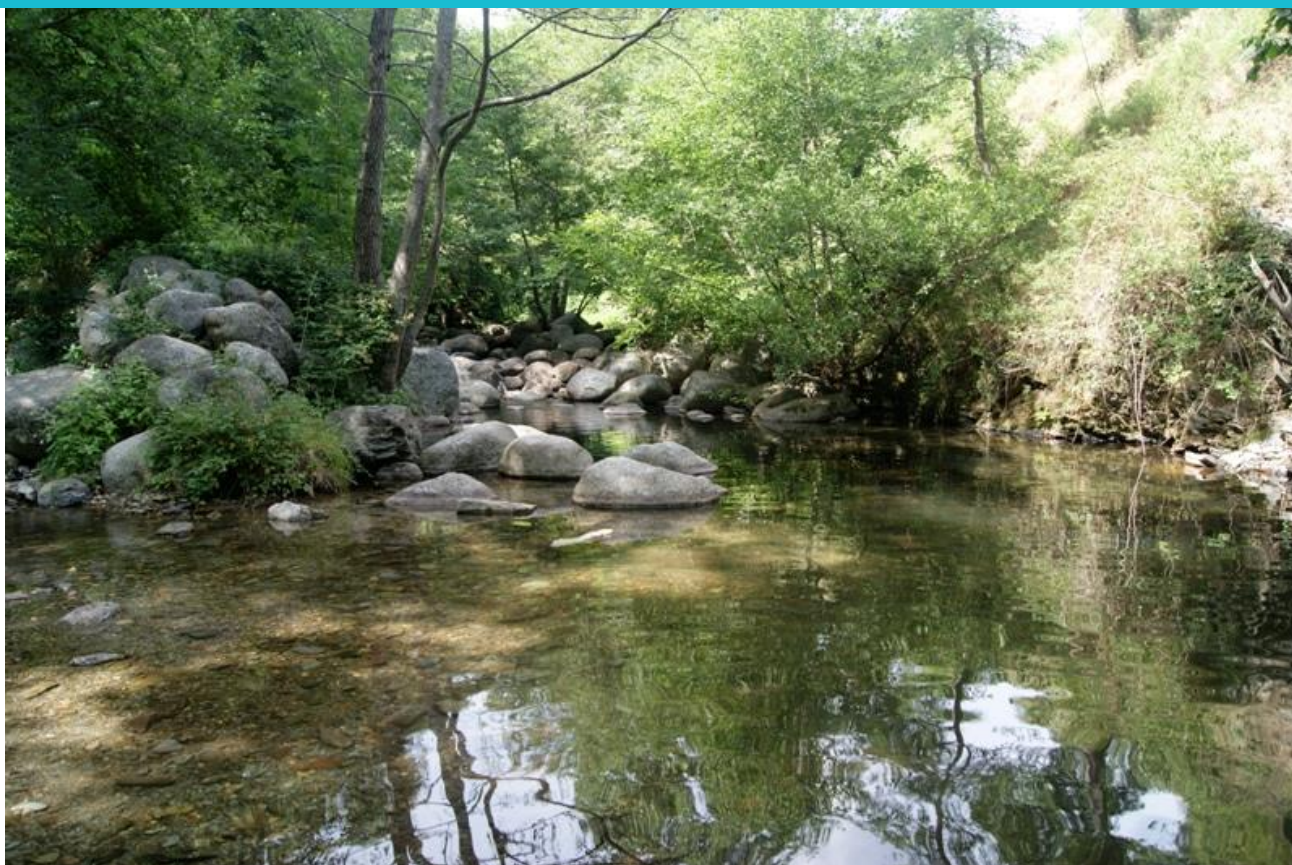


# AGLAE 2025

## PROFICIENCY TESTING SCHEME CATALOGUE

### ORGANIC POLLUTANTS IN CLEAN WATERS



#### **AGLAE Association**

Parc des Pyramides  
427 rue des Bourreliers  
59320 Hallennes lez Haubourdin  
France

☎ +33 (0)3 20 16 91 40

[www.association-aglae.fr](http://www.association-aglae.fr)

[contact@association-aglae.fr](mailto:contact@association-aglae.fr)

## PTS Organic pollutants in clean waters

<b>Fresh waters</b>
<b>4C</b> Volatile organohalogens and benzene derivatives in fresh waters
<b>4Cb</b> Volatile organohalogens and benzene derivatives in fresh waters at low concentration levels
<b>20A</b> Chlorophenols in fresh waters
<b>21A</b> Alkylphenols in fresh waters
<b>22A</b> Chloroanilines in fresh waters
<b>23A</b> Organotin compounds in fresh waters
<b>24A</b> Brominated Diphenyl Ethers in fresh waters
<b>24C</b> HBCDD in fresh waters and HBCDD, HBB in waste waters
<b>25A</b> Biphenyl in fresh waters
<b>26A</b> Phthalates in fresh waters
<b>27A</b> C10-C13 chloroalkanes (SCCPs) in fresh waters
<b>28A</b> Haloacetic acids in fresh waters
<b>29A</b> Epichlorohydrin in fresh waters
<b>52</b> AOX in waters
<b>54</b> Toxins of cyanobacteria in fresh waters
<b>55</b> Glyphosate, AMPA and other herbicides in fresh waters
<b>57</b> Pharmaceuticals in fresh waters
<b>58</b> Bisphenol A and S in fresh waters
<b>59</b> Perfluorinated compounds in fresh waters
<b>64</b> PAHs and PCBs in fresh waters
<b>65A</b> Pesticides and degradation residues - List 1 - in fresh waters
<b>65B</b> Pesticides and degradation residues – List 2 - in fresh waters
<b>65C</b> Pesticides and degradation residues - List 3 - in fresh waters
<b>65D</b> Pesticides and degradation residues - List 4 - in fresh waters
<b>65E</b> Parabens in fresh waters
<b>65F</b> Pesticides and degradation residues - List 5 - in fresh waters
<b>65G</b> Pesticides and degradation residues - List 6 - in fresh waters
<b>65H</b> Pesticides and degradation residues - List 7 - in fresh waters
<b>67</b> Acrylamide in fresh waters
<b>69</b> Metabolites of chloroacetamides in fresh waters
<b>Atypical and non-atypical mineral waters</b>
<b>92</b> BTEX and VOC in atypical and non-atypical natural mineral waters
<b>Swimming pool waters</b>
<b>66</b> THMs in swimming pool waters

**\* In which tests are provided the various organic micropollutants?**

A document enables you to search by name and/or CAS code and find out in which programme(s) and matrix(ces) they are provided. This index is available upon request.

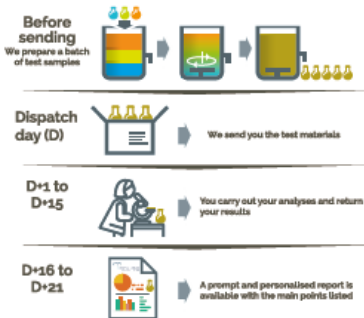
## Participate in AGLAE's External Quality Control



**A WAY OF WORKING THAT PROVIDES YOU WITH THE HIGHEST STANDARD OF RESULTS WITH CONFIDENTIALITY AND IMPARTIALITY**

Each step of the way, AGLAE is there supporting you.

**REGISTRATIONS FOR PROFICIENCY TESTING ARE DONE KNOWING THE WHOLE PROCESS, WITH A DETAILED AND RIGOUROUS SCHEDULE**

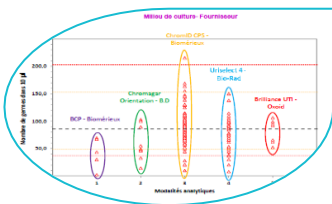


- ✓ The number of evaluations per year for each parameter is specified in the catalogue, concentration levels and stabilisation are available on request.
- ✓ AGLAE uses "express" shipments for your samples and makes sure of their distribution to your laboratory.
- ✓ A sufficient delay to analyse and the report the results.
- ✓ Via your member area, **enter your results and find instructions, assigned codes, reports, summaries of your results, certificate of participation...**

### THE OPTIMISATION OF RISK MANAGEMENT FOR YOUR LABORATORY



- You have a better visibility of potential anomalies through:
- ✓ An appropriate test design (duplicate samples, repeated measurements),
  - ✓ A large number of participants: around 200 laboratories in the field of 'base' microbiology and 'base' physico-chemical analyses.



- AGLAE's detailed study:
- ✓ Influence of the analytical methods, manufacturers (equipment and consumables)... factors that we study to help you improve the quality of your analyses,
  - ✓ For waters intended for medical use and water microbiology, estimation of your own uncertainties in microbiology,
  - ✓ Check of your uncertainty estimates in chemistry (zeta-score),
  - ✓ A report validated by experts of the field and personalised for most tests.

### ATTRACTIVE DISCOUNTS, PAYMENT CONDITIONS MADE EASIER

- Choose among the various programmes and benefit from discounts up to 15%,
- A possible payment in 2 or 3 folds depending on the amount your participation.
- Payment possible by cheque (in €), bank transfer, credit card on <https://www.helloasso.com/associations/a-g-l-a-e/paiements/aglae>

Amount of your invoice <i>(excluding transport cost)</i>	Discount
3000 ≤ Amount < 6000 € excl. VAT	<b>5%</b>
6000 ≤ Amount < 9000 € excl. VAT	<b>10%</b>
Amount ≥ 9000 € excl. VAT	<b>15%</b>

## Additional services



### ADDITIONAL TEST SAMPLES TO TEST ANOTHER METHOD, EVALUATE A TECHNICIAN

- ✓ Test samples available for almost all the tests at half price.
- ✓ Besides your usual distribution, you receive one (or several) additional parcel(s).
- ✓ The results of these samples are not statistically processed by AGLAE but for most tests you get a sheet **in your results file** where to **calculate your z-score**. Note that this sheet can also be used in case of unit error, incorrect results' report, etc.

⇒ Check the **list of samples and their price on your Member Area** (Downloads / Catalogues) and contact us to receive a quote. These additional samples need to be ordered after you registration for the test and up to 2 weeks before the shipment.



### QUALITY CONTROL MATERIALS FOR YOUR MONITORING AND IMPROVEMENT OF YOUR ANALYTICAL PERFORMANCE

- ✓ Materials coming from the **solid matrices tests: sediments, sludge, polluted sites and soils**.
- ✓ Purchased at any time during the year and delivered with a certificate presenting the precision values obtained during the test (assigned value and uncertainties).

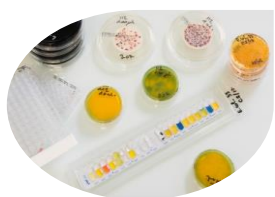
⇒ Check the **list of materials, prices and available quantities on your Member Area** (Downloads / Catalogues) and contact us to receive a quote.



### TRAINING SESSIONS IN MICROBIOLOGY: ONE TOPIC POSSIBLY PROVIDED IN ENGLISH

Two-day on-line session to become operational for:

- ✓ Characterising a microbiological method according to ISO 13843 in order to validate it
- ⇒ *Should you be interested in such a session, please get back to us.*



### CUSTOMIZED SERVICE: 'PERFORMANCE CHARACTERISTICS OF MICROBIOLOGICAL METHODS'

Do you need to characterise specific methods?

AGLAE can provide you support to establish methods performance characteristics, in conformity with ISO 13843\*. Benefit from AGLAE's technical and statistical experience to validate your microbiological method.

\* *Water quality — Requirements for establishing performance characteristics of quantitative microbiological methods*

⇒ *Should you have such needs, contact us to study your request together and issue a quote.*



### SUMMARY OF YOUR RESULTS FOR WATER MICROBIOLOGY AND WATER FOR MEDICAL USE TESTS

Gather at any time your results and performance: for a selected period, your results are grouped in an Excel file; this is a tool to support you in your Internal Quality Control, your audits...

## Programmes' description

**One programme includes from 1 to 4 proficiency tests (= rounds).**

Prices specified in the catalogue are for the complete programme, which corresponds to several rounds most of the time.

When purchasing a complete programme, the price per test is lower.

## Content

For each programme's description, you will find the technical content of the test : volumes, parameters, matrices, dispatch month...

The concentration levels and stabilisation modalities of the samples are available on request.

*The samples' dispatch months are given for information only.*

**Transport costs depend on the destination and tests selected within the programmes; contact us to get a quote.**

Our aim is to prepare materials as close as possible to the samples analysed in routine: the contamination levels can therefore be very low or very high.

➔ **Our concentration levels are available on request.**

## Caption



This logo shows that the programme is accredited by LABORATORIES section in compliance with ISO/IEC 17043.

## Glossary of the matrices used

Name of the matrix for water chemistry		Below the matrices that can be used, alone or mixed, to comply with the representativity of the specified matrix				
		public drinking waters	bottled waters	reverse osmosis waters	deionised waters	surface waters
<b>Natural mineral waters</b>						
<b>Non-atypical*</b>			<b>x</b> still (dry residue at 180°C < 1500 mg/L)			
<b>Atypical</b>	<b>carbo-gaseous</b>		<b>x</b> gaseous (CO <sub>2</sub> > 250 mg/L)	<b>x</b> regasified (CO <sub>2</sub> > 250 mg/L)		
	<b>highly mineralised</b>		<b>x</b> still (dry residue at 180°C > 1500 mg/L)			
<b>Fresh waters</b>						
<b>Non-atypical natural mineral waters*</b>			<b>x</b> still (dry residue at 180°C < 1500 mg/L)			
<b>Natural waters</b>						<b>x</b>
<b>Clean waters</b>		<b>x</b>	<b>x</b>	<b>x</b>	<b>x</b>	<b>x (clear)</b>

For more information on atypical waters, check the following document: [ANSES/LHN/REF-CSE - Version 3](#) (in French)

*\* For some parameters in non-atypical natural mineral waters, specific programmes exist (3C, 92) with concentration levels different from those in fresh waters.*

Name of the matrix for water chemistry		Below the matrices that can be used, alone or mixed, to comply with the representativity of the specified matrix			
		Waste waters from urban WWTP	Swimming pool waters	Estuary water, costal water	Synthetic waters
<b>Swimming pool waters</b>			<b>x</b>		

## PROGRAMME 4C: VOLATILE ORGANOHALOGENS AND BENZENE DERIVATIVES IN FRESH WATERS

*The materials are suitable for the check of public drinking waters, spring waters and non-atypical natural mineral waters except for BTEX and VOHs provided in non-atypical mineral waters of programme 92.*



€ 573 excl. VAT - total amount for 1 test (excluding transport costs)

59 participants in 2024 – EXPERIENCE: 30 YEARS



**Need to test another method, evaluate your staff?**

Order **additional test samples** (parcel in its entirety): € 290 excl. VAT (excluding transport costs)

### 1 SHIPMENT / YEAR - REFRIGERATED PARCEL

Month	1	2	3	4	5	6	7	8	9	10	11	12
Test			25M4C.1									
Matrix			Clean water									

### Parameters to analyse

**BTEX:** 1,2,3-trimethylbenzene, 1,2,4-trimethylbenzene (= pseudocumene), 1,3,5-trimethylbenzene (= mesitylene), benzene, bromobenzene, ethylbenzene, isopropylbenzene, toluene, total xylenes, xylene ortho, xylene para + xylene meta

**VOHs:** 1,1,1,2-tetrachloroethane, 1,2-dichloroethane, bromoform, bromochloromethane, chloroform, dibromochloromethane, dibromomethane, dichlorobromomethane, tetrachloroethylene, trichloroethylene, THMs\*, vinyl chloride

**chlorobenzenes - light:** 1,2-dichlorobenzene, 1,3-dichlorobenzene, 1,4-dichlorobenzene, chlorobenzene, dichlorobenzenes (sum of the 3 isomers),  
**chlorotoluenes:** 2-chlorotoluene, 3-chlorotoluene, 4-chlorotoluene, chlorotoluenes (sum of the 3 isomers), **VOHs:** 1,1,1-trichloroethane, 1,1,2,2-tetrachloroethane, 1,1,2-trichloroethane, 1,1-dichloroethane, 1,1-dichloroethylene, 1,2-dibromoethane, 1,2-dichloroethylene (cis+trans), 1,2-dichloroethylene cis, 1,2-dichloroethylene trans, 1,2-dichloropropane, 1,3-dichloropropane, 1,3-dichloropropene (cis+trans), 3-chloroprene (3-chloropropene), carbon tetrachloride, chloroprene, dichloromethane, hexachloroethane, methyl bromide (bromomethane), methyl ter-butyl ether (MTBE), sec-butylbenzene

\*THM (= trihalomethanes) in µg/L = sum of contents of chloroform (in µg of CHCl<sub>3</sub>/L) + bromoform (in µg of CHBr<sub>3</sub>/L) + dichlorobromomethane (in µg of CHBrCl<sub>2</sub>/L) + dibromochloromethane (in µg of CHBr<sub>2</sub>Cl/L)

### Parameters to analyse

**nitro-aromatics:** 1-chloro-2-nitrobenzene,  
1-chloro-3-nitrobenzene, 1-chloro-4-nitrobenzene,  
2,4-dinitrotoluene, 2,6-dinitrotoluene,  
2-nitrotoluene, nitrobenzene,  
**chlorobenzenes:** 1,2,4,5-tetrachlorobenzene, tetrachlorobenzenes (sum of the 3 isomers),  
1,2,3-trichlorobenzene, 1,2,4-trichlorobenzene,  
1,3,5-trichlorobenzene,  
trichlorobenzenes (sum of the 3 isomers), hexachlorobenzene, pentachlorobenzene  
**Hexachlorobutadiene**

### PARTICULARITIES



#### Other recommended proficiency tests:

- ↳ **Programme 4Cb** 'Volatile organohalogenes and benzene derivatives in fresh waters at low concentration levels - **'Environmental approval'** to meet the requirements of French legislation (contact us for the concentration ranges).
- ↳ **Programme 92** 'BTEX and VOC in atypical and non-atypical natural mineral waters' – **'Health approval'**



## PROGRAMME 4Cb: VOLATILE ORGANOHALOGENS AND BENZENE DERIVATIVES IN FRESH WATERS AT LOW CONCENTRATION LEVELS

*The materials are suitable for the check of public drinking waters, spring waters and non-atypical natural mineral waters except for BTEX and VOHs provided in non-atypical mineral waters of programme 92.*



€ 343 excl. VAT - total amount for 1 test (excluding transport costs)

62 participants in 2024 – EXPERIENCE: 30 YEARS



**Need to test another method, evaluate your staff?**

Order **additional test samples** (parcel in its entirety): € 175 excl. VAT (excluding transport costs)

### 1 SHIPMENT / YEAR - REFRIGERATED PARCEL

Month	1	2	3	4	5	6	7	8	9	10	11	12
Test											25M4Cb.1	
Matrix											Clean water	

### Parameters to analyse

**BTEX:** 1,2,3-trimethylbenzene, 1,2,4-trimethylbenzene (= pseudocumene), 1,3,5-trimethylbenzene (= mesitylene), benzene, bromobenzene, ethylbenzene, isopropylbenzene, toluene, total xylenes, xylene ortho, xylene para + xylene meta

**VOHs:** 1,1,1,2-tetrachloroethane, 1,2-dichloroethane, bromoform, bromochloromethane, chloroform, dibromochloromethane, dibromomethane, dichlorobromomethane, tetrachloroethylene, trichloroethylene, THMs\*, vinyl chloride

**chlorobenzenes - light:** 1,2-dichlorobenzene, 1,3-dichlorobenzene, 1,4-dichlorobenzene, chlorobenzene, dichlorobenzenes (sum of the 3 isomers),  
**chlorotoluenes:** 2-chlorotoluene, 3-chlorotoluene, 4-chlorotoluene, chlorotoluenes (sum of the 3 isomers), **VOHs:** 1,1,1-trichloroethane, 1,1,2,2-tetrachloroethane, 1,1,2-trichloroethane, 1,1-dichloroethane, 1,1-dichloroethylene, 1,2-dibromoethane, 1,2-dichloroethylene (cis+trans), 1,2-dichloroethylene cis, 1,2-dichloroethylene trans, 1,2-dichloropropane, 1,3-dichloropropane, 1,3-dichloropropene (cis+trans), 3-chloroprene (3-chloropropene), carbon tetrachloride, chloroprene, dichloromethane, hexachloroethane, methyl bromide (bromomethane), methyl ter-butyl ether (MTBE), sec-butylbenzene

\* **THMs (= trihalomethanes) in µg/L = sum of contents of chloroform (in µg of CHCl<sub>3</sub>/L) + bromoform (in µg of CHBr<sub>3</sub>/L) + dichlorobromomethane (in µg of CHBrCl<sub>2</sub>/L) + dibromochloromethane (in µg of CHBr<sub>2</sub>Cl/L)**

### Parameters to analyse

**nitro-aromatics:** 1-chloro-2-nitrobenzene,  
1-chloro-3-nitrobenzene, 1-chloro-4-nitrobenzene,  
2,4-dinitrotoluene, 2,6-dinitrotoluene,  
2-nitrotoluene, nitrobenzene,  
**chlorobenzenes:** 1,2,4,5-tetrachlorobenzene, tetrachlorobenzenes (sum of the 3 isomers),  
1,2,3-trichlorobenzene, 1,2,4-trichlorobenzene,  
1,3,5-trichlorobenzene,  
trichlorobenzenes (sum of the 3 isomers), hexachlorobenzene, pentachlorobenzene  
**Hexachlorobutadiene**

### PARTICULARITIES

**'Environment approval':** this is an additional proficiency test identical to the tests of programme 4C but at low concentration levels to meet the requirements of French legislation (contact us for the concentration ranges).



#### Other recommended proficiency test:

↳ **Programme 92** 'BTEX and VOC in atypical and non-atypical natural mineral waters – **'Health approval'**

## PROGRAMME 20A: CHLOROPHENOLS IN FRESH WATERS



€ 294 excl. VAT - total amount for 2 tests (excluding transport costs)

29 participants in 2024 – EXPERIENCE: 15 YEARS



**Need to test another method, evaluate your staff?**

Order **additional test samples** (parcel in its entirety): € 75 excl. VAT (excluding transport costs)

**New to catalogue: 2,4-dichlorophenol + 2,5-dichlorophenol**

### 2 SHIPMENTS AVAILABLE / YEAR - REFRIGERATED PARCEL

Month	1	2	3	4	5	6	7	8	9	10	11	12
Test	<b>25M20A.1</b>					<b>25M20A.2</b>						
Matrix	<b>Natural water</b>					<b>Natural water</b>						

### Parameters to analyse for each shipment

2-chlorophenol, 3-chlorophenol, 4-chlorophenol, chlorophenols (sum of the 3 isomers),  
 2,3-dichlorophenol, 2,4-dichlorophenol,  
**2,4-dichlorophenol + 2,5-dichlorophenol**,  
 2,6-dichlorophenol, 3,4-dichlorophenol,  
 3,5-dichlorophenol,  
 dichlorophenols (sum of the 6 isomers),  
 2,3,4-trichlorophenol, 2,3,5-trichlorophenol,  
 2,3,6-trichlorophenol, 2,4,5-trichlorophenol,  
 2,4,6-trichlorophenol, 3,4,5-trichlorophenol, trichlorophenols (sum of the 6 isomers),  
 pentachlorophenol, 4-chloro-3-methylphenol

### PARTICULARITIES



You will receive a concentrated solution in addition to the bottles of natural water. The analyses have to be carried out with the reconstituted samples.

## PROGRAMME 21A: ALKYLPHENOLS IN FRESH WATERS



€ 193 excl. VAT -total amount for 2 tests (excluding transport costs)

26 participants in 2024 – EXPERIENCE: 15 YEARS



**Need to test another method, evaluate your staff?**

Order **additional test samples** (parcel in its entirety): € 50 excl. VAT (excluding transport costs)

### 2 SHIPMENTS AVAILABLE / YEAR - REFRIGERATED PARCEL

Month	1	2	3	4	5	6	7	8	9	10	11	12
Test	25M21A.1					25M21A.2						
Matrix	Natural water					Natural water						

### Parameters to analyse for each shipment

2-methylphenol [CAS 95-48-7],  
 4-methylphenol [CAS 106-44-5],  
 4-n-nonylphenol [CAS 104-40-5],  
 4-nonylphenols [CAS 84852-15-3],  
 4-tert-butylphenol [CAS 98-54-4],  
 4-tert-octylphenol [CAS 140-66-9],  
 NP1EO - 4-nonylphenol monoethoxylate

### PARTICULARITIES



You will receive a concentrated solution in addition to the bottles of natural water. The analyses have to be carried out with the reconstituted samples.

## PROGRAMME 22A: CHLOROANILINES IN FRESH WATERS



**€ 162 excl. VAT** - total amount for 2 tests (excluding transport costs)

**16 participants** in 2024 – EXPERIENCE: 15 YEARS



**Need to test another method, evaluate your staff?**

Order **additional test samples** (parcel in its entirety): **€ 45 excl. VAT** (excluding transport costs)

### 2 SHIPMENTS AVAILABLE / YEAR - REFRIGERATED PARCEL

Month	1	2	3	4	5	6	7	8	9	10	11	12
Test	<b>25M22A.1</b>					<b>25M22A.2</b>						
Matrix	<b>Natural water</b>					<b>Natural water</b>						

### Parameters to analyse for each shipment

2-chloroaniline, 3-chloroaniline, 4-chloroaniline, Chloroanilines (sum of the 3 isomers),  
3,4-dichloroaniline, 4-chloro-2-nitroaniline

### PARTICULARITIES



You will receive a concentrated solution in addition to the bottles of natural water. The analyses have to be carried out with the reconstituted samples.

## PROGRAMME 23A: ORGANOTIN COMPOUNDS IN FRESH WATERS



€ 206 excl. VAT - total amount for 2 tests (excluding transport costs)

20 participants in 2024 – EXPERIENCE: 15 YEARS




**Need to test another method, evaluate your staff?**

Order **additional test samples** (parcel in its entirety): € 55 excl. VAT (excluding transport costs)

2 SHIPMENTS AVAILABLE / YEAR - REFRIGERATED PARCEL												
Month	1	2	3	4	5	6	7	8	9	10	11	12
Test		25M23A.1					25M23A.2					
Matrix		Natural water					Natural water					

<b>Parameters to analyse for each shipment</b>
monobutyltin cation, dibutyltin cation, dioctyltin cation, tributyltin cation, triphenyltin cation, tetrabutyltin

<b>PARTICULARITIES</b>
 <p>You will receive a concentrated solution in addition to the bottles of natural water. The analyses have to be carried out with the reconstituted samples.</p>

## PROGRAMME 24A: BROMINATED DIPHENYL ETHERS IN FRESH WATERS



€ 254 excl. VAT - total amount for 2 tests (excluding transport costs)

18 participants in 2024 – EXPERIENCE: 15 YEARS



**Need to test another method, evaluate your staff?**

Order **additional test samples** (parcel in its entirety): € 65 excl. VAT (excluding transport costs)

### 2 SHIPMENTS AVAILABLE / YEAR - REFRIGERATED PARCEL

Month	1	2	3	4	5	6	7	8	9	10	11	12
Test		25M24A.1								25M24A.2		
Matrix		Natural water								Natural water		

### Parameters to analyse for each shipment

BDE-28, BDE-47, BDE-99, BDE-100, BDE-153,  
BDE-154, BDE-183, BDE-209

### PARTICULARITIES



You will receive a concentrated solution in addition to the bottles of natural water. The analyses have to be carried out with the reconstituted samples.

## PROGRAMME 24C: HBCDD IN FRESH WATERS AND HBCDD, HBB IN WASTE WATERS



€ 372 excl. VAT - total amount for 2 tests (excluding transport costs)

15 participants in 2024 – EXPERIENCE > 5 YEARS

### 2 SHIPMENTS AVAILABLE / YEAR - REFRIGERATED PARCEL

Month	1	2	3	4	5	6	7	8	9	10	11	12
Test				25M24C.1						25M24C.2		
Matrix				Natural water						Waste water		

### Parameters to analyse

#### 25M24C.1

alpha-HBCDD (alpha-hexabromocyclododecane)  
beta-HBCDD (beta-hexabromocyclododecane)  
gamma-HBCDD (gamma-hexabromocyclododecane)  
total HBCDD (total hexabromocyclododecane)

#### 25M24C.2

total HBCDD (total hexabromocyclododecane)  
HBB (hexabromobiphenyl) <sup>[1]</sup>

<sup>[1]</sup> parameter not covered by accreditation (see general conditions of registration)

### PARTICULARITIES



You will receive a concentrated solution in addition to the bottles of natural water or waste water. The analyses have to be carried out with the reconstituted samples.



## PROGRAMME 25A: BIPHENYL IN FRESH WATERS



€ 219 excl. VAT - total amount for 2 tests (excluding transport costs)

13 participants in 2024 – EXPERIENCE: 15 YEARS




**Need to test another method, evaluate your staff?**

Order **additional test samples** (parcel in its entirety): € 55 excl. VAT (excluding transport costs)

2 SHIPMENTS AVAILABLE / YEAR - REFRIGERATED PARCEL												
Month	1	2	3	4	5	6	7	8	9	10	11	12
Test		25M25A.1								25M25A.2		
Matrix		Natural water								Natural water		

<b>Parameters to analyse for each shipment</b>
biphenyl

**PARTICULARITIES**



You will receive a concentrated solution in addition to the bottles of natural water. The analyses have to be carried out with the reconstituted samples.

## PROGRAMME 26A: PHTHALATES IN FRESH WATERS



€ 236 excl. VAT - total amount for 2 tests (excluding transport costs)

30 participants in 2024 – EXPERIENCE: 15 YEARS



**Need to test another method, evaluate your staff?**

Order **additional test samples** (parcel in its entirety): € 60 excl. VAT (excluding transport costs)

### 2 SHIPMENTS AVAILABLE / YEAR - REFRIGERATED PARCEL

Month	1	2	3	4	5	6	7	8	9	10	11	12
Test		25M26A.1								25M26A.2		
Matrix		Natural water								Natural water		

### Parameters to analyse for each shipment

BBzP (Butyl benzyl phthalate), DBP (Dibutylphthalate),  
DEHP (Di(2-ethylhexyl)phthalate), DEP (Diethylphthalate),  
DMP (Dimethylphthalate), DiBP (Diisobutylphthalate)

### PARTICULARITIES



You will receive a concentrated solution in addition to the bottles of natural water. The analyses have to be carried out with the reconstituted samples.

**PROGRAMME 27A:  
C10-C13 CHLOROALKANES (SCCPs) IN FRESH WATERS**



**€ 226 excl. VAT** - - total amount for 2 tests (excluding transport costs)

**10 participants** in 2024 – EXPERIENCE: 15 YEARS



**Need to test another method, evaluate your staff?**

Order **additional test samples** (parcel in its entirety): **€ 60 excl. VAT** (excluding transport costs)

2 SHIPMENTS AVAILABLE / YEAR - REFRIGERATED PARCEL												
Month	1	2	3	4	5	6	7	8	9	10	11	12
Test			<b>25M27A.1</b>						<b>25M27A.2</b>			
Matrix			<b>Natural water</b>						<b>Natural water</b>			

<b>Parameters to analyse for each shipment</b>
C10-C13 chloroalkanes

## PROGRAMME 28A: HALOACETIC ACIDS IN FRESH WATERS

*The materials are suitable for the check of analyses in public distribution waters, spring waters and non-atypical natural mineral water.*



€ 253 excl. VAT -total amount for 2 tests (excluding transport costs)

36 participants in 2024 – EXPERIENCE: 15 YEARS



**Need to test another method, evaluate your staff?**

Order **additional test samples** (parcel in its entirety): € 65 excl. VAT (excluding transport costs)

### 2 SHIPMENTS AVAILABLE / YEAR - REFRIGERATED PARCEL

Month	1	2	3	4	5	6	7	8	9	10	11	12
Test				<b>25M28A.1</b>						<b>25M28A.2</b>		
Matrix				Clean water						Clean water		

### Parameters to analyse for each shipment

bromoacetic acid, bromochloroacetic acid, bromodichloroacetic acid, chloroacetic acid, dibromoacetic acid, dibromochloroacetic acid, dichloroacetic acid, tribromoacetic acid, trichloroacetic acid, sum of the 5 haloacetic acids: chloroacetic acid + dichloroacetic acid + trichloroacetic acid + bromoacetic acid + dibromoacetic acid

### PARTICULARITIES



You will receive a concentrated solution in addition to the bottles of clean water. The analyses have to be carried out with the reconstituted samples.

## PROGRAMME 29A: EPICHLOROHYDRIN IN FRESH WATERS

*The materials are suitable for the check of analyses in fresh waters, public drinking waters, spring waters and non-atypical natural mineral waters.*



**€ 193 excl. VAT** - total amount for 2 tests (excluding transport costs)

**24 participants** in 2024 – EXPERIENCE: 15 YEARS



**Need to test another method, evaluate your staff?**

Order **additional test samples** (parcel in its entirety): **€ 50 excl. VAT** (excluding transport costs)

### 2 SHIPMENTS AVAILABLE / YEAR - REFRIGERATED PARCEL

Month	1	2	3	4	5	6	7	8	9	10	11	12
Test				<b>25M29A.1</b>								<b>25M29A.2</b>
Matrix				Clean water								Natural water

### Parameters to analyse for each shipment

epichlorohydrin

## PROGRAMME 52: AOX IN WATERS



**€ 344 excl. VAT** - total amount for 4 tests (excluding transport costs)

**39 participants** in 2024 - EXPERIENCE > 20 YEARS



**Need to test another method, evaluate your staff?**

Order **additional test samples** (parcel in its entirety): **€ 45 excl. VAT** (excluding transport costs)

4 SHIPMENTS AVAILABLE / YEAR - REFRIGERATED PARCEL												
Month	1	2	3	4	5	6	7	8	9	10	11	12
Test	<b>25M52.1</b>					<b>25M52.2</b>			<b>25M52.3</b>		<b>25M52.4</b>	
Matrix	<b>Clean water</b>					<b>Waste water</b>			<b>Clean water</b>		<b>Waste water</b>	

<b>Parameters to analyse for each clean water shipment</b>
AOX

<b>Parameters to analyse for each waste water shipment</b>
AOX, SPE-AOX

**PROGRAMME 54:  
TOXINS OF CYANOBACTERIA IN FRESH WATERS**



€ 1719 excl. VAT - total amount for 2 tests (excluding transport costs)

20 participants in 2024 - EXPERIENCE > 15 YEARS



**Need to test another method, evaluate your staff?**

Order **additional test samples** (parcel in its entirety): € 430 excl. VAT (excluding transport costs)

**2 SHIPMENTS AVAILABLE / YEAR - REFRIGERATED PARCEL**

Month	1	2	3	4	5	6	7	8	9	10	11	12
Test			25M54.1					25M54.2				
Matrix			Natural water					Natural water				

Parameters to analyse for each shipment	Number of bottles	Volume of bottles	Number of measurements per parameter and per bottle
microcystin-LR, microcystin-RR, microcystin-YR microcystins by ELISA test	2	1000 mL	2

## PROGRAMME 55: GLYPHOSATE, AMPA AND OTHER HERBICIDES IN FRESH WATERS

*The materials are suitable for the check of analyses in clear freshwaters, public drinking waters, spring waters and non-atypical natural mineral waters.*



€ 461 excl. VAT - total amount for 2 tests (excluding transport costs)

28 participants in 2024 - EXPERIENCE > 15 YEARS



**Need to test another method, evaluate your staff?**

Order **additional test samples** (parcel in its entirety): € 120 excl. VAT (excluding transport costs)

### 2 SHIPMENTS AVAILABLE / YEAR - REFRIGERATED PARCEL

Month	1	2	3	4	5	6	7	8	9	10	11	12
Test		25M55.1						25M55.2				
Matrix		Clean water						Clean water				

### Parameters to analyse for each shipment

AMPA, aminotriazole, glufosinate, glyphosate



## PROGRAMME 57: PHARMACEUTICALS IN FRESH WATERS

*The materials are suitable for the check of analyses in fresh waters, public drinking waters, spring waters and non-atypical natural mineral waters.*



**€ 848 excl. VAT** -total amount for 2 tests (excluding transport costs)

**32 participants** in 2024 - EXPERIENCE > 10 YEARS



**Need to test another method, evaluate your staff?**

Order **additional test samples** (parcel in its entirety): **€ 215 excl. VAT** (excluding transport costs)

### 2 SHIPMENTS AVAILABLE / YEAR - REFRIGERATED PARCEL

Month	1	2	3	4	5	6	7	8	9	10	11	12
Test Matrix		<b>25M57.1</b> Clean water						<b>25M57.2</b> Natural water				

#### Parameters to analyse for each shipment

1-hydroxy ibuprofen<sup>[1]</sup>, 17-beta-estradiol,  
2-hydroxy ibuprofen<sup>[1]</sup>, acetazolamide<sup>[1]</sup>, caffeine, cyclophosphamide, erythromycin, estrone, ethynylestradiol,  
fenofibric acid, ibuprofen, lorazepam, metformin, metoprolol, metronidazole, oxazepam, paracetamol, sotalol,  
sulfamethazine, sulfamethoxazole

1,7-dimethylxanthine<sup>[1]</sup>, acetylsalicylic acid<sup>[1]</sup>, atenolol, carbamazepine, carbamazepine epoxide,  
carboxyibuprofen<sup>[1]</sup>, ciprofloxacin, cotinine, diazepam, diclofenac, ketoprofen, niflumic acid, norethindrone,  
ofloxacin, tramadol, triclocarban

<sup>[1]</sup> parameter not covered by accreditation (see general conditions of registration)

### PARTICULARITIES



You will receive two concentrated solutions in addition to the bottles of water. The analyses have to be carried out with the reconstituted samples.

## PROGRAMME 58: BISPHENOL A AND S IN FRESH WATERS

*The materials are suitable for the check of analyses in public distribution waters, spring waters and non-atypical natural mineral water.*



**€ 213 excl. VAT** - total amount for 2 tests (excluding transport costs)

**26 participants** in 2024 - EXPERIENCE > 10 YEARS



**Need to test another method, evaluate your staff?**

Order **additional test samples** (parcel in its entirety): **€ 55 excl. VAT** (excluding transport costs)

### 2 SHIPMENTS AVAILABLE / YEAR - Refrigerated parcel

Month	1	2	3	4	5	6	7	8	9	10	11	12
Test				<b>25M58.1</b>				<b>25M58.2</b>				
Matrix				<b>Clean water</b>				<b>Clean water</b>				

### Parameters to analyse for each shipment

bisphenol A, bisphenol S

### PARTICULARITIES



You will receive a concentrated solution in addition to the bottles of clean water. The analyses have to be carried out with the reconstituted samples.

## PROGRAMME 59: PERFLUORINATED COMPOUNDS IN FRESH WATERS



€ 499 excl. VAT - total amount for 2 tests (excluding transport costs)

51 participants in 2024 - EXPERIENCE > 10 YEARS



**Need to test another method, evaluate your staff?**

Order **additional test samples** (parcel in its entirety): € 125 excl. VAT (excluding transport costs)

### 2 SHIPMENTS AVAILABLE / YEAR - REFRIGERATED PARCEL

Month	1	2	3	4	5	6	7	8	9	10	11	12
Test			<b>25M59.1</b>						<b>25M59.2</b>			
Matrix			<b>Clean water</b>						<b>Natural water</b>			

### Parameters to analyse for each shipment

PFBA [CAS 375-22-4], PFBS [CAS 375-73-5],  
 PFDA [CAS 335-76-2], PFDS [CAS 335-77-3],  
 PFDoDA [CAS 307-55-1] (=PFDoA),  
 PFDoDS [CAS 79780-39-5],  
 PFHpA [CAS 375-85-9], PFHpS [CAS 375-92-8],  
 PFHxA [CAS 307-24-4],  
 PFHxS - linear isomer [CAS 355-46-4] (=PFHS),  
 PFNA [CAS 375-95-1], PFNS [CAS 68259-12-1],  
 PFOA [CAS 335-67-1],  
 PFOS - linear isomer [CAS 1763-23-1],  
 PFPeA [CAS 2706-90-3], PFPeS [CAS 2706-91-4],  
 PFTrDA [CAS 72629-94-8], PFTrDS, [CAS 791563-89-8], PFUnDA [CAS 2058-94-8], PFUnDS [CAS 749786-16-1]  
 Sum of the 20 perfluorinated compounds

### PARTICULARITIES



You will receive a concentrated solution in addition to the bottles of water. The analyses have to be carried out with the reconstituted samples.

## PROGRAMME 64: PAHs AND PCBs IN FRESH WATERS

*The materials are suitable for the control of public drinking waters, spring waters and non-atypical natural mineral waters*



**€ 863 excl. VAT** - total amount for 2 tests (excluding transport costs)

**47 participants** in 2024 – EXPERIENCE: 30 YEARS



**Need to test another method, evaluate your staff?**

Order **additional test samples** (parcel in its entirety): **€ 220 excl. VAT** (excluding transport costs)

### 2 SHIPMENTS AVAILABLE / YEAR - REFRIGERATED PARCEL

Month	1	2	3	4	5	6	7	8	9	10	11	12
Test	<b>25M64.1</b>					<b>25M64.2</b>						
Matrix	<b>Clean water</b>					<b>Clean water</b>						

### Parameters to analyse for each shipment

**PAHs:** 2-methylfluoranthene, 2-methylnaphtalene, acenaphtene, acenaphtylene, anthracene, benzo[a]anthracene, benzo[a]pyrene, benzo[b]fluoranthene, benzo[g,h,i]perylene, benzo[k]fluoranthene, chrysene, dibenzo[a,h]anthracene, fluoranthene, fluorene, indeno[1,2,3 - cd]pyrene, naphtalene, phenanthrene, pyrene

**PCBs:** PCB 28, PCB 52, PCB 101, PCB 118, PCB 138, PCB 153, PCB 180, PCB 194

## PROGRAMME 65A:

### PESTICIDES AND DEGRADATION RESIDUES - LIST 1 - IN FRESH WATERS

*The materials are suitable for the check of analyses in fresh waters, public drinking waters, spring waters and non-atypical natural mineral waters.*



€ 529 excl. VAT - total amount for 2 tests (excluding transport costs)

51 participants in 2024 - EXPERIENCE > 25 YEARS



**Need to test another method, evaluate your staff?**

Order **additional test samples** (parcel in its entirety): € 135 excl. VAT (excluding transport costs)

#### 2 SHIPMENTS AVAILABLE / YEAR - REFRIGERATED PARCEL

Month	1	2	3	4	5	6	7	8	9	10	11	12
Test			<b>25M65A.1</b>							<b>25M65A.2</b>		
Matrix			Clean water							Natural water		

#### Parameters to analyse for each shipment

##### Pesticides and degradation residues - list 1:

2,4'-DDD , 2,4'-DDE, 2,4'-DDT, 4,4'-DDD, 4,4'-DDE, 4,4'-DDT, acionifen,alachlor, aldrin, alpha-endosulfan, alpha-HCH, anthraquinone, beta-endosulfan, beta-HCH, bifenox, chlordane (total), chlordecone, chlorfenvinphos, chlormephos, chlorpropham, chlorpyrifos-ethyl, chlorpyrifos-methyl, cis-chlordane (CAS 5103-71-9), cypermethrin, delta-HCH, deltamethrin, demeton-O<sup>[1]</sup>, diazinon, dichlorvos, diclofop methyl, dieldrin, endosulfan (total), endrin, epsilon HCH, ethion, ethofumesate, ethoprophos, fenitrothion, fenvalerate, flurochloridone, HCH total (sum of isomers alpha+beta+gamma+delta), heptachlorepoxyde (total), heptachlorepoxyde endo trans, heptachlorepoxyde exo cis, heptachlor, ioxynil octanoate, iprodione, isodrin, lambda-cyhalothrin, lindane (gamma-HCH), malathion, oxadiazon, parathion-ethyl, parathion-methyl, pendimethalin, piperonyl butoxyde, procymidone, pyrimiphos-methyl, quinoxyfen, trans-chlordane (CAS 5103-74-2), tributyl phosphate, trifluralin

<sup>[1]</sup> parameter not covered by accreditation (see general conditions of registration)

#### PARTICULARITIES



##### Particularity of the test design:

\*You will have 2L of sample (2 bottles of 1L) to carry out one measurement of all the parameters. You will receive a concentrated solution in addition to the bottles of water. **The analyses have to be carried out with the reconstituted samples.**

## PROGRAMME 65B:

### PESTICIDES AND DEGRADATION RESIDUES - LIST 2 - IN FRESH WATERS

*The materials are suitable for the check of analyses in fresh waters, public drinking waters, spring waters and non-atypical natural mineral waters.*



€ 561 excl. VAT - total amount for 2 tests (excluding transport costs)

53 participants in 2024 - EXPERIENCE > 25 YEARS



**Need to test another method, evaluate your staff?**

Order **additional test samples** (parcel in its entirety): € 145 excl. VAT (excluding transport costs)

#### 2 SHIPMENTS / YEAR - REFRIGERATED PARCEL

Month	1	2	3	4	5	6	7	8	9	10	11	12
Test			25M65B.1							25M65B.2		
Matrix			Clean water							Natural water		

#### Parameters to analyse for each shipment

##### Pesticides and degradation residues - list 2:

2,4-D, MCPA, 2,6-dichlorobenzamide, 2-hydroxyatrazine, acetochlor, ametryn, atrazine, azoxystrobin, bentazon, boscalid, bromacil, carbendazim, carbofuran, chloridazone, chlortoluron, clomazone, cyanazine, cyproconazole, cyprodinil, deisopropylatrazine, desethylatrazine, desethylterbuthylazine, dichlorprop, difenoconazole, diflufenicanil, dimethachlor, dimethenamid, dimethomorph, diuron, epoxiconazole, fenpropidin, flusilazole, hexaconazole, hexazinone, imidaclopride, isoproturon, isoproturon-didemethyl (= IPPU), kresoxim-methyl, lenacile, linuron, mecoprop (= MCP), metamidron, metazachlor, methabenzthiazuron, methomyl, metobromuron, metolachlor, metoxuron, metribuzin, monuron, napropamide, oxadixyl, prometryn, propachlor, propazine, propiconazole, propyzamide, pyrimethanil, simazine, tebuconazole, terbumeton, terbuthylazine, terbutryn, tetraconazole, tolyltriazone

#### PARTICULARITIES

\* **Particularity of the test design:** You will have 2L of sample (2 bottles of 1L) to carry out one measurement of all the parameters.

## PROGRAMME 65C:

### PESTICIDES AND DEGRADATION RESIDUES - LIST 3 - IN FRESH WATERS

*The materials are suitable for the check of the analyses in fresh waters, public drinking waters, spring waters and non-atypical natural mineral waters.*



€ 472 excl. VAT - total amount for 2 tests (excluding transport costs)

45 participants in 2024 - EXPERIENCE > 5 YEARS



**Need to test another method, evaluate your staff?**

Order **additional test samples** (parcel in its entirety): € 120 excl. VAT (excluding transport costs)

#### 2 SHIPMENTS AVAILABLE / YEAR - REFRIGERATED PARCEL

Month	1	2	3	4	5	6	7	8	9	10	11	12
Test				<b>25M65C.1</b>							<b>25M65C.2</b>	
Matrix				Clean water							Natural water	

#### Parameters to analyse for each shipment

##### Pesticides and degradation residues - list 3:

1-(3,4-dichlorophenyl)-3-methylurea(= demethyl diuron), asulame, atrazine 2-hydroxy-desethyl, atrazine deisopropyl desethyl, benfluralin, benzotriazole, bromoxynil, cybutryn, cymoxanil, dicamba, dichlormid, dimethoate, dinoterbe, ethidimuron, fenarimol, fenoxycarb, fipronil, flonicamid, florasulam, fludioxonil, flufenacet (=thiaflumide), fluroxypyr, flurtamone, foramsulfuron, fosthiazate, hydroxyterbuthylazine, imazalil, imazamox, iodosulfuron-methyl, ioxynil, isoxaflutole, mercaptodimethur (= methiocarb), mesosulfuron-methyl, mesotrione, metaldehyde, metconazole, metsulfuron methyl, nicosulfuron, omethoate, oryzalin, picloram, pirimicarb, prochloraz, propamocarb, propham, prosulfocarb, prosulfuron, quinmerac, rimsulfuron, spiroxamine, sulcotrione, sulfosulfuron, tebutame, terbumeton desethyl, thiabendazole, thiamethoxam, thifensulfuron methyl, triadimenol, triclopyr, triclosan, trinexapac-ethyl

#### PARTICULARITIES

\* **Particularity of the test design:** You will have 2L of sample (2 bottles of 1L) to carry out one analysis of all the parameters.

## PROGRAMME 65D:

### PESTICIDES AND DEGRADATION RESIDUES - LIST 4 - IN FRESH WATERS

The materials are suitable for the control of public drinking waters, spring waters and non-atypical natural mineral waters.



€ 269 excl. VAT - total amount for 2 tests (excluding transport costs)

22 participants in 2024 - EXPERIENCE > 5 YEARS



**Need to test another method, evaluate your staff?**

Order **additional test samples** (parcel in its entirety): € 70 excl. VAT (excluding transport costs)

#### 2 SHIPMENTS AVAILABLE / YEAR - REFRIGERATED PARCEL

Month	1	2	3	4	5	6	7	8	9	10	11	12
Test				25M65D.1								25M65D.2
Matrix				Clean water								Clean water

#### Parameters to analyse for each shipment

beflubutamid, benoxacor, bixafen, cadusafos, clethodim, daminozide, dichlobenil, fipronil sulfone, galaxolide, maleic hydrazide, N-butylbenzenesulfonamide (NBBS), N,N-dimethyl-N'-P-tolylsulphamide (DMST), triflurosulfuron-methyl

chlormequat, diquat, fosetyl aluminium, mepiquat, paraquat

#### PARTICULARITIES

Some molecules are analysed by few laboratories. If the number of results is lower than 8, the assigned value will be the spiking value and the standard deviation for proficiency assessment will be determined from reproducibility values observed during previous tests.



## PROGRAMME 65E: PARABENS IN FRESH WATERS

*The materials are suitable for the check of analyses in freshwaters, public drinking waters, spring waters and non-atypical natural mineral waters.*



**€ 219 excl. VAT** - total amount for 2 tests (excluding transport costs)

**10 participants** in 2024 – EXPERIENCE > 5 YEARS



**Need to test another method, evaluate your staff?**

Order **additional test samples** (parcel in its entirety): **€ 55 excl. VAT** (excluding transport costs)

### 2 SHIPMENTS AVAILABLE / YEAR - REFRIGERATED PARCEL

Month	1	2	3	4	5	6	7	8	9	10	11	12
Test		<b>25M65E.1</b>								<b>25M65E.2</b>		
Matrix		Clean water								Natural water		

### Parameters to analyse for each shipment

ethylparaben, methylparaben, propylparaben

### PARTICULARITIES



You will receive a concentrated solution in addition to the bottles of water. The analyses have to be carried out with the reconstituted samples.

## PROGRAMME 65F:

### PESTICIDES AND DEGRADATION RESIDUES - LIST 5 - IN FRESH WATERS

The materials are suitable for the control of fresh waters, public drinking waters, spring waters and non-atypical natural mineral waters.



€ 475 excl. VAT - total amount for 1 test (excluding transport costs)

43 participants in 2024 - EXPERIENCE: 3 YEARS



**Need to test another method, evaluate your staff?**

Order **additional test samples** (parcel in its entirety): € 240 excl. VAT (excluding transport costs)

**Please note: the parameters provided in 2024 within the 24M65F.2 test are now provided in the 65H programme.**

#### 1 SHIPMENT AVAILABLE / YEAR - REFRIGERATED PARCEL

Month	1	2	3	4	5	6	7	8	9	10	11	12
Test	<b>25M65F.1</b>											
Matrix	<b>Clean water</b>											

#### Parameters to analyse

2,4,5-T, 2,4-DB, 2,4-MCPB (MCPB), 3-hydroxy-carbofuran, acetamiprid, aldicarb, amidosulfuron, benalaxyl, bromuconazole, bupirimate, carbaryl, carbetamide, carboxine, carfentrazone-ethyl, chlorantraniliprole, chlorbromuron, chloridazone desphenyl, chloridazone methyl desphenyl, chlorothalonil (daconil or tetrachloroisophthalonitrile), chlorothalonil SA (chlorothalonil-M-R417888), chlorothalonil-4-hydroxy (chlorothalonil-M-R182281), chlorothalonil-M-R471811, chloroxuron, clothianidin, cycloxydim<sup>[1]</sup>, desmethylisoproturon (1-(4-isopropylphenyl)-3-methylurea or IPU-1CH3), desmetryn, didemethyldiuron (3,4-DCPU or DCPU or 3,4-dichlorophenylurea), diflubenzuron (difluron), dimefuron, dinoseb (DNBP), fenbuconazole, fenpropimorph, fenuron (PDU), flazasulfuron (shibagen), fluazifop<sup>[1]</sup>, fluazifop-P-butyl<sup>[1]</sup>, fluoxastrobine, fluquinconazole, flutriafol, iprovalicarb, isoxaben, metalaxyl, monolinuron, myclobutanil, norflurazon, paclobutrazole, penconazole, pencycuron, picoxystrobine, pinoxaden, propanil (3,4-DCPA or DCPA), propoxur, pyraclostrobine, pyroxsulame, quintozene<sup>[1]</sup> (terrachlor or pentachloronitrobenzene PCNB), sebuthylazine, simazine-hydroxy, tebufenozide, thiacloprid, triallate, triasulfuron, tribenuron-methyl (tribenuron), trifloxystrobine, tritosulfuron (biathlon), vinclozolin<sup>[1]</sup>, zoxamide (zoxium)

<sup>[1]</sup> parameter not covered by accreditation (see general conditions of registration)

#### PARTICULARITIES

##### \* Particularity of the test design :

You have 2L of sample (2 bottles of 1L) to carry out one measurement of all the parameters.



You will receive a concentrated solution in addition to the bottles of water. **The analyses have to be carried out with the reconstituted samples.**

## PROGRAMME 65G:

### PESTICIDES AND DEGRADATION RESIDUES - LIST 6 - IN FRESH WATERS

*The materials are suitable for the check of analyses in fresh waters, public drinking waters, spring waters and non-atypical natural mineral waters.*



€ 150 excl. VAT - total amount for 1 test (excluding transport costs)

28 participants in 2024 - EXPERIENCE: 3 YEARS



**Need to test another method, evaluate your staff?**

Order **additional test samples** (parcel in its entirety): € 75 excl. VAT (excluding transport costs)

#### 1 SHIPMENT / YEAR - REFRIGERATED PARCEL

Month	1	2	3	4	5	6	7	8	9	10	11	12
Test					25M65G.1							
Matrix					Clean water							

#### Parameters to analyse

Azinphos-ethyl, azinphos-methyl, bifenthrine, bromophos-ethyl, bromophos-methyl, cyfluthrine, dicofol<sup>[1]</sup> (kelthane), endosulfan sulfate, ethephon<sup>[1]</sup>, fenpropathrine, fenthion, fonofos, isofenphos, methidathion, methoxychlor (DMDT or methoxy-DDT), mevinphos (phosdrin or duraphos), oxychlordane, oxyfluorfen, permethrin<sup>[1]</sup>, pethoxamid, phosalone<sup>[1]</sup> (benzphos or zolone), pyrimiphos-ethyl, sulfotep<sup>[1]</sup>, terbuphos<sup>[1]</sup>, triazophos, vamidothion

<sup>[1]</sup> parameter not covered by accreditation (see general conditions of registration)

## PROGRAMME 65H: PESTICIDES AND DEGRADATION RESIDUES - LIST 7 - IN FRESH WATERS

*The materials are suitable for the control of fresh waters, public drinking waters, spring waters and non-atypical natural mineral waters.*



€ 320 excl. VAT - total amount for 1 test (excluding transport costs)

41 participants in 2024 - EXPERIENCE: 3 YEARS



**Need to test another method, evaluate your staff?**

Order **additional test samples** (parcel in its entirety): € 160 excl. VAT (excluding transport costs)

**New to catalogue**

**The parameters of this test are those which were provided in 2024 within the 24M65F.2 test.**

### 1 SHIPMENT AVAILABLE / YEAR - REFRIGERATED PARCEL

Month	1	2	3	4	5	6	7	8	9	10	11	12
Test							25M65H.1					
Matrix							Clean water					

### Parameters to analyse

acifluorfen, aldicarb-sulfone, aldicarb-sulfoxide, atrazine deisopropyl 2-hydroxy, buturon, clodinafop-propargyl<sup>[1]</sup>, clopyralid, cloquintocet-mexyl<sup>[1]</sup>, desmethyl-norflurazon, diethofencarb, fluxapyroxad, imazametabenz, imazamethabenz-methyl, mepanipirim (mepanipyr), methoxyfenozone<sup>[1]</sup>, metrafenone, molinate, neburon, N,N-Dimethylsulfamide (DMS), oxamyl, prometon, secbumeton, simetryn<sup>[1]</sup>, spirotetramat, tebuthiuron, terbuthylazine desethyl-2-hydroxy, triadimefon, triflumuron, triticonazole

<sup>[1]</sup> parameter not covered by accreditation (see general conditions of registration)

## PROGRAMME 67: ACRYLAMIDE IN FRESH WATERS

*The materials are suitable for the check of analyses in fresh waters, public drinking waters, spring waters and non-atypical natural mineral waters.*



**196 € excl. VAT** - total amount for 2 tests (excluding transport costs)

**23 participants** in 2024 – EXPERIENCE: 10 YEARS



**Need to test another method, evaluate your staff?**

Order **additional test samples** (parcel in its entirety): **50 € excl. VAT** (excluding transport costs)

### 2 SHIPMENTS / YEAR - REFRIGERATED PARCEL

Month	1	2	3	4	5	6	7	8	9	10	11	12
Test				<b>25M67.1</b>					<b>25M67.2</b>			
Matrix				Clean water					Natural water			

### Parameters to analyse for each shipment

acrylamide

### PARTICULARITIES



You will receive a concentrated solution in addition to the bottles of water. The analyses have to be carried out with the reconstituted samples.

## PROGRAMME 69: METABOLITES OF CHLOROACETAMIDES IN FRESH WATERS

*The materials are suitable for the check of fresh waters, public drinking waters, spring waters and non-atypical natural mineral waters.*



**€ 402 excl. VAT** - total amount for 2 tests (excluding transport costs)

**28 participants** in 2024 - EXPERIENCE > 5 YEARS



**Need to test another method, evaluate your staff?**  
Order **additional test samples** (parcel in its entirety): **€ 105 excl. VAT** (excluding transport costs)

2 SHIPMENTS AVAILABLE / YEAR - REFRIGERATED PARCEL												
Month	1	2	3	4	5	6	7	8	9	10	11	12
Test				<b>25M69.1</b>								<b>25M69.2</b>
Matrix				<b>Clean water</b>								<b>Natural water</b>

Parameters to analyse for each shipment
Acetochlor ESA, Acetochlor OXA, Alachlor ESA, Alachlor OXA, Dimethachlor CGA 369873, Dimethachlor ESA (Dimethachlor CGA 354742), Dimethachlor OXA, Dimethenamid ESA , Dimethenamid OXA, Flufenacet ESA , Flufenacet OXA, Metazachlor ESA, Metazachlor OXA, Metolachlor ESA, Metolachlor NOA 413173, Metolachlor OXA, Propachlor ESA, Propachlor OXA <sup>[1]</sup>

<sup>[1]</sup> parameter not covered by accreditation (see general conditions of registration)

## PROGRAMME 92: BTEX AND VOC IN ATYPICAL AND NON-ATYPICAL NATURAL MINERAL WATERS

*Non-atypical mineral waters: still mineral water with dry residue content at 180°C < 1500 mg/L*  
*Atypical mineral waters: still mineral waters with dry residue content at 180°C > 1500 mg/L or carbogaseous water with CO<sub>2</sub> > 250 mg/L*



€ 553 excl. VAT - total amount for 2 tests (excluding transport costs)

17 participants in 2024 - EXPERIENCE > 5 YEARS



**Need to test another method, evaluate your staff?**

Order **additional test samples** (parcel in its entirety): € 140 excl. VAT (excluding transport costs)

### 2 SHIPMENTS AVAILABLE / YEAR - REFRIGERATED PARCEL

Month	1	2	3	4	5	6	7	8	9	10	11	12
Test					25M92.1						25M92.2	
Matrix					Non-atypical mineral water and Carbogaseous water						Non-atypical mineral water and Highly mineralised mineral water	

### Parameters to analyse for each shipment in two types of water

**BTEX:** benzene, toluene, total xylenes, xylene ortho, xylene para + xylene meta, ethylbenzene

**VOC:** 1,2-dichloroethane, bromoform, chloroform, dibromochloromethane, dichlorobromomethane, tetrachloroethylene, trichloroethylene, trihalomethanes (THMs)\*, vinyl chloride

*\*THM (= trihalomethanes) in µg/L = sum of contents of chloroform (in µg of CHCl<sub>3</sub>/L) + bromoform (in µg of CHBr<sub>3</sub>/L) + dichlorobromomethane (in µg of CHBrCl<sub>2</sub>/L) + dibromochloromethane (in µg of CHBr<sub>2</sub>Cl/L)*

### PARTICULARITIES

The first proficiency test will concern non-atypical mineral waters and carbogaseous waters.  
 The second proficiency test will concern non-atypical mineral waters and highly mineralised waters.

**'Health approval':** this specific programme provides **concentration levels appropriate for atypical and non-atypical mineral waters.**

## PROGRAMME 66: THMS IN SWIMMING POOL WATERS



€ 177 excl. VAT - total amount for 2 tests (excluding transport costs)

50 participants in 2024 – EXPERIENCE > 10 YEARS



**Need to test another method, evaluate your staff?**

Order **additional test samples** (parcel in its entirety): € 45 excl. VAT (excluding transport costs)

2 SHIPMENTS AVAILABLE / YEAR - REFRIGERATED PARCEL												
Month	1	2	3	4	5	6	7	8	9	10	11	12
Test					25M66.1					25M66.2		
Matrix					Swimming pool water					Swimming pool water		

**Parameters to analyse for each shipment**

bromoform, chloroform, dibromochloromethane, dichlorobromomethane, trihalomethanes (THMs)\*

*\*THMs (= trihalomethanes) in µg/L = sum of contents of chloroform (in µg of CHCl<sub>3</sub>/L) + bromoform (in µg of CHBr<sub>3</sub>/L) + dichlorobromomethane (in µg of CHBrCl<sub>2</sub>/L) + dibromochloromethane (in µg of CHBr<sub>2</sub>Cl/L)*