

# AGLAE 2025

## PROFICIENCY TESTING SCHEME CATALOGUE

### BASE PARAMETERS AND INDICATORS IN WATERS



#### **AGLAE Association**

Parc des Pyramides  
427 rue des Bourreliers  
59320 Hallennes lez Haubourdin  
France

☎ +33 (0)3 20 16 91 40

[www.association-aglae.fr](http://www.association-aglae.fr)

[contact@association-aglae.fr](mailto:contact@association-aglae.fr)

## PTS base parameters and indicators in waters

<b>Fresh waters and drinking waters</b>
<b>1A</b> Chemical analyses in fresh waters
<b>1Ab</b> Chemical analyses in fresh waters at low concentration levels
<b>1B</b> Indicators in fresh waters
<b>1C</b> Chlorophyll a and pheopigments index in fresh waters
<b>1D</b> Field parameters in fresh waters
<b>1E</b> Dissolved oxygen in fresh waters
<b>1G</b> Dry residue in fresh waters
<b>1I</b> Colour and turbidity in fresh waters
<b>50</b> Perchlorates and disinfection by-products in fresh waters
<b>91</b> Odour and flavour in waters intended for human consumption
<b>Atypical mineral waters</b>
<b>90</b> Chemical analyses in sparkling waters
<b>90A</b> Chemical analyses in highly mineralised mineral waters
<b>90B</b> Dissolved CO <sub>2</sub> in sparkling waters
<b>93</b> Dry residue in atypical natural mineral waters
<b>Swimming pool waters</b>
<b>1H</b> Field parameters and indicators in swimming pool waters
<b>50A</b> Disinfection by-products in swimming pool waters
<b>Saline waters</b>
<b>6</b> Chemical analyses in saline waters
<b>6A</b> Dissolved oxygen in saline waters
<b>Waste waters</b>
<b>2A</b> Chemical analyses in waste waters
<b>2B</b> Indicators in waste waters
<b>2C</b> Indicators in waste waters at low concentration levels
<b>2D</b> Field parameters in waste waters
<b>Waste waters</b>
<b>2F</b> ST-COD at low contents in waste waters
<b>2G</b> Dry residue in waste waters



## Additional services



### ADDITIONAL TEST SAMPLES TO TEST ANOTHER METHOD, EVALUATE A TECHNICIAN

- ✓ Test samples available for almost all the tests at half price.
- ✓ Besides your usual distribution, you receive one (or several) additional parcel(s).
- ✓ The results of these samples are not statistically processed by AGLAE but for most tests you get a sheet **in your results file** where to **calculate your z-score**. Note that this sheet can also be used in case of unit error, incorrect results' report, etc.

⇒ Check the **list of samples and their price on your Member Area** (Downloads / Catalogues) and contact us to receive a quote. These additional samples need to be ordered after you registration for the test and up to 2 weeks before the shipment.



### QUALITY CONTROL MATERIALS FOR YOUR MONITORING AND IMPROVEMENT OF YOUR ANALYTICAL PERFORMANCE

- ✓ Materials coming from the **solid matrices tests: sediments, sludge, polluted sites and soils**.
- ✓ Purchased at any time during the year and delivered with a certificate presenting the precision values obtained during the test (assigned value and uncertainties).

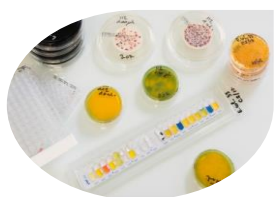
⇒ Check the **list of materials, prices and available quantities on your Member Area** (Downloads / Catalogues) and contact us to receive a quote.



### TRAINING SESSIONS IN MICROBIOLOGY: ONE TOPIC POSSIBLY PROVIDED IN ENGLISH

Two-day on-line session to become operational for:

- ✓ Characterising a microbiological method according to ISO 13843 in order to validate it
- ⇒ *Should you be interested in such a session, please get back to us.*



### CUSTOMIZED SERVICE: 'PERFORMANCE CHARACTERISTICS OF MICROBIOLOGICAL METHODS'

Do you need to characterise specific methods?

AGLAE can provide you support to establish methods performance characteristics, in conformity with ISO 13843\*. Benefit from AGLAE's technical and statistical experience to validate your microbiological method.

\* *Water quality — Requirements for establishing performance characteristics of quantitative microbiological methods*

⇒ *Should you have such needs, contact us to study your request together and issue a quote.*



### SUMMARY OF YOUR RESULTS FOR WATER MICROBIOLOGY AND WATER FOR MEDICAL USE TESTS

Gather at any time your results and performance: for a selected period, your results are grouped in an Excel file; this is a tool to support you in your Internal Quality Control, your audits...

## Programmes' description

**One programme includes from 1 to 4 proficiency tests (= rounds).**

Prices specified in the catalogue are for the complete programme, which corresponds to several rounds most of the time.

When purchasing a complete programme, the price per test is lower.

## Content

For each programme's description, you will find the technical content of the test : volumes, parameters, matrices, dispatch month...

The concentration levels and stabilisation modalities of the samples are available on request.

*The samples' dispatch months are given for information only.*

**Transport costs depend on the destination and tests selected within the programmes; contact us to get a quote.**

Our aim is to prepare materials as close as possible to the samples analysed in routine: the contamination levels can therefore be very low or very high.

➔ **Our concentration levels are available on request.**

## Caption



This logo shows that the programme is accredited by LABORATORIES section in compliance with ISO/IEC 17043.

## Glossary of the matrices used

Name of the matrix for water chemistry		Below the matrices that can be used, alone or mixed, to comply with the representativity of the specified matrix				
		public drinking waters	bottled waters	reverse osmosis waters	deionised waters	surface waters
<b>Natural mineral waters</b>						
<b>Non-atypical*</b>			<b>x</b> still (dry residue at 180°C < 1500 mg/L)			
<b>Atypical</b>	<b>carbo-gaseous</b>		<b>x</b> gaseous (CO <sub>2</sub> > 250 mg/L)	<b>x</b> regasified (CO <sub>2</sub> > 250 mg/L)		
	<b>highly mineralised</b>		<b>x</b> still (dry residue at 180°C > 1500 mg/L)			
<b>Fresh waters</b>						
<b>Non-atypical natural mineral waters*</b>			<b>x</b> still (dry residue at 180°C < 1500 mg/L)			
<b>Natural waters</b>						<b>x</b>
<b>Clean waters</b>		<b>x</b>	<b>x</b>	<b>x</b>	<b>x</b>	<b>x (clear)</b>

For more information on atypical waters, check the following document: [ANSES/LHN/REF-CSE - Version 3](#) (in French)

*\* For some parameters in non-atypical natural mineral waters, specific programmes exist (3C, 92) with concentration levels different from those in fresh waters.*

Name of the matrix for water chemistry		Below the matrices that can be used, alone or mixed, to comply with the representativity of the specified matrix			
		Waste waters from urban WWTP	Swimming pool waters	Estuary water, costal water	Synthetic waters
<b>Swimming pool waters</b>			<b>x</b>		
<b>Waste waters</b>		<b>x</b>			<b>x</b>
<b>Saline and brackish waters</b>				<b>x</b>	<b>x</b>

WWTP: Waste Water Treatment Plant

## PROGRAMME 1A: CHEMICAL ANALYSES IN FRESH WATERS

*The materials are suitable for the check of analyses in clear freshwaters, public drinking waters, spring waters and non-atypical natural mineral waters.*



**€ 292 excl. VAT** - total amount for 2 tests (excluding transport costs)

**230 participants** in 2024 – EXPERIENCE > 30 YEARS



**Need to test another method, evaluate your staff?**

Order **additional test samples** (parcel in its entirety): **€ 75 excl. VAT** (excluding transport costs)

**New: REDOX potential**

### 2 SHIPMENTS AVAILABLE / YEAR - Refrigerated parcel

Month	1	2	3	4	5	6	7	8	9	10	11	12
Test		<b>25M1A.1</b>									<b>25M1A.2</b>	
Matrix		<b>Clean water</b>									<b>Clean water</b>	

### Parameters to analyse for each shipment

conductivity, F<sup>-</sup>, NH<sub>4</sub><sup>+</sup>, NO<sub>2</sub><sup>-</sup>, NO<sub>3</sub><sup>-</sup>, pH, **REDOX potential**

Ca<sup>2+</sup>, Cl<sup>-</sup>, K<sup>+</sup>, Mg<sup>2+</sup>, Na<sup>+</sup>, PO<sub>4</sub><sup>3-</sup>, SO<sub>4</sub><sup>2-</sup>, soluble silicates, degree of hardness, total alkalinity, total organic carbon (TOC), total silica

total organic carbon (TOC), permanganate index

### PARTICULARITIES



**Other recommended proficiency tests:**

↳ **Programme 1Ab** 'Chemical analyses in fresh waters at low concentration levels'

↳ **Programme 1I** 'Colour and turbidity in fresh waters'



## PROGRAMME 1Ab:

### CHEMICAL ANALYSES IN FRESH WATERS AT LOW CONCENTRATION LEVELS

The materials are suitable for the check of analyses in clear freshwaters, public drinking waters, spring waters and non-atypical natural mineral waters.



€ 217 excl. VAT - total amount for 1 test (excluding transport costs)

134 participants in 2024 – EXPERIENCE > 30 YEARS



**Need to test another method, evaluate your staff?**

Order **additional test samples** (parcel in its entirety): € 110 excl. VAT (excluding transport costs)

**New: REDOX potential**

#### 1 SHIPMENT / YEAR - REFRIGERATED PARCEL

Month	1	2	3	4	5	6	7	8	9	10	11	12
Test Matrix							25M1Ab.1 Clean water					

#### Parameters to analyse

conductivity, F<sup>-</sup>, NH<sub>4</sub><sup>+</sup>, NO<sub>2</sub><sup>-</sup>, NO<sub>3</sub><sup>-</sup>, pH, **REDOX potential**

Ca<sup>2+</sup>, Cl<sup>-</sup>, K<sup>+</sup>, Mg<sup>2+</sup>, Na<sup>+</sup>, PO<sub>4</sub><sup>3-</sup>, SO<sub>4</sub><sup>2-</sup>, soluble silicates, degree of hardness, total alkalinity, total organic carbon (TOC), total silica

total organic carbon (TOC), permanganate index

#### PARTICULARITIES



**Other recommended proficiency tests:**

↳ **Programme 11 'Colour and turbidity in fresh water'**



## PROGRAMME 1B: INDICATORS IN FRESH WATERS



**€ 173 excl. VAT** - total amount for 2 tests (excluding transport costs)

**133 participants** in 2024 – EXPERIENCE > 25 YEARS



**Need to test another method, evaluate your staff?**

Order **additional test samples** (parcel in its entirety): **€ 45 excl. VAT** (excluding transport costs)

### 2 SHIPMENTS AVAILABLE / YEAR - REFRIGERATED PARCEL

Month	1	2	3	4	5	6	7	8	9	10	11	12
Test				<b>25M1B.1</b>						<b>25M1B.2</b>		
Matrix				Natural water						Natural water		

#### Parameters to analyse for each shipment

Chemical Oxygen Demand,  
Chemical Oxygen Demand (Sealed Tube method),  
DOC, total organic carbon (TOC),  
Total bound nitrogen (TN<sub>b</sub> measured),  
Total Kjeldahl Nitrogen (TKN), Total-P

biochemical oxygen demand after 5 days

total suspended solids (TSS)

**PROGRAMME 1C:  
CHLOROPHYLL A AND PHEOPIGMENTS INDEX IN FRESH WATERS**



**€ 201 excl. VAT** - total amount for 2 tests (excluding transport costs)

**51 participants** in 2024 - EXPERIENCE > 20 YEARS



**Need to test another method, evaluate your staff?**

Order **additional test samples** (parcel in its entirety): **€ 55 excl. VAT** (excluding transport costs)

**2 SHIPMENTS AVAILABLE / YEAR - REFRIGERATED PARCEL**

Month	1	2	3	4	5	6	7	8	9	10	11	12
Test						<b>25M1C.1</b>			<b>25M1C.2</b>			
Matrix						Natural water			Natural water			

**Parameters to analyse for each shipment**

chlorophyll a, pheopigments index

**PARTICULARITIES**

Chlorophyll a and pheopigments index: after extraction, measurement of the absorbance by molecular absorption spectrometry then calculation of the concentrations using the LORENZEN or the SCOR-UNESCO equation.

## PROGRAMME 1D: FIELD PARAMETERS IN FRESH WATERS

*The materials are suitable for the check of analyses in public drinking waters, spring waters and non-atypical natural mineral waters.*



€ 155 excl. VAT - total amount for 2 tests (excluding transport costs)

207 participants in 2024 - EXPERIENCE > 15 YEARS



**Need to test another method, evaluate your staff?**

Order **additional test samples** (parcel in its entirety): € 40 excl. VAT (excluding transport costs)

**New:** removal of colour and turbidity

### 2 SHIPMENTS AVAILABLE / YEAR - Refrigerated parcel

Month	1	2	3	4	5	6	7	8	9	10	11	12
Test		25M1D.1							25M1D.2			
Matrix		Clean water							Clean water			

### Parameters to analyse for each shipment

conductivity, free chlorine (or available chlorine), isocyanuric acid, pH, REDOX potential, total chlorine

### PARTICULARITIES



**Other recommended proficiency tests:**

- ↪ **Programme 1I** 'Colour and turbidity in fresh waters'
- ↪ **Programmes 100** 'In situ measurements and sampling in different types of waters' in several regions of Metropolitan France to evaluate the quality of your on-site sampling (tests conducted in French only)
- ↪ **Programme 1E** 'Dissolved oxygen in fresh waters'

## PROGRAMME 1E: DISSOLVED OXYGEN IN FRESH WATERS

*The materials are suitable for the check of analyses in public drinking waters, spring waters and non-atypical natural mineral waters.*



€ 141 excl. VAT - total amount for 2 tests (excluding transport costs)

148 participants in 2024 - EXPERIENCE > 10 YEARS



**Need to test another method, evaluate your staff?**

Order **additional test samples** (parcel in its entirety): € 40 excl. VAT (excluding transport costs)

### 2 SHIPMENTS AVAILABLE / YEAR - REFRIGERATED PARCEL

Month	1	2	3	4	5	6	7	8	9	10	11	12
Test	<b>25M1E.1</b>					<b>25M1E.2</b>						
Matrix	<b>Clean water</b>					<b>Clean water</b>						

### Parameters to analyse for each shipment

dissolved O<sub>2</sub>

### PARTICULARITIES



#### Other recommended proficiency tests:

- ↳ Programmes 100 'In situ measurements and sampling in different types of waters' in several regions of Metropolitan France to evaluate the quality of your on-site sampling
- ↳ Programme 1D 'Field parameters in fresh waters'

## PROGRAMME 1G: DRY RESIDUE IN FRESH WATERS

*The materials are suitable for the check of analyses in public drinking waters, spring waters and non-atypical natural mineral waters.*



**€ 79 excl. VAT** - total amount for 2 tests (excluding transport costs)

**61 participants** in 2024 - EXPERIENCE > 10 YEARS



**Need to test another method, evaluate your staff?**

Order **additional test samples** (parcel in its entirety): **€ 20 excl. VAT** (excluding transport costs)

### 2 SHIPMENTS AVAILABLE / YEAR - REFRIGERATED PARCEL

Month	1	2	3	4	5	6	7	8	9	10	11	12
Test	<b>25M1G.1</b>						<b>25M1G.2</b>					
Matrix	<b>Clean water</b>						<b>Clean water</b>					

### Parameters to analyse for each shipment

Dry residue at 105°C, Dry residue at 180°C

## PROGRAMME 1I: COLOUR AND TURBIDITY IN FRESH WATERS

The materials are suitable for the check of analyses in public drinking waters, spring waters, non-atypical natural mineral waters and surface water.



**New to catalogue**

€ 100 excl. VAT - total amount for 2 tests (excluding transport costs)



**Need to test another method, evaluate your staff?**

Order **additional test samples** (parcel in its entirety): € 25 excl. VAT (excluding transport costs)

### 2 SHIPMENTS AVAILABLE / YEAR - REFRIGERATED PARCEL

Month	1	2	3	4	5	6	7	8	9	10	11	12
Test		25M1I.1							25M1I.2			
Matrix		Clean water							Natural water			

### Parameters to analyse for each shipment

Colour - visual comparison with PtCl62,  
Colour- comparison with PtCl62-(by spectrometry), colour intensity measurement at 436 nm (meth B),  
pH

turbidity

### PARTICULARITIES

**Colour by comparison with hexachloroplatinate:** the colour can be determined by visual comparison according to (NF EN) ISO 7887 - method D or by spectrophotometry according to (NF EN) ISO 7887 - method C. For clean water (clear water), the samples should not be filtered.

**Colour using (NF EN) ISO 7887 method B:** the colour determination according to (NF EN) ISO 7887 method B can be carried out on these samples. For clean water (clear water), the samples should not be filtered.



#### Other recommended proficiency tests:

↳ **Programmes 100** 'In situ measurements and sampling in different types of waters' in several regions of Metropolitan France to evaluate the quality of your on-site sampling (conducted in French only)

↳ **Programme 1E** 'Dissolved oxygen in fresh waters'

## PROGRAMME 50:

### PERCHLORATES AND DISINFECTION BY-PRODUCTS IN FRESH WATERS

*The materials are suitable for the check of analyses in public drinking waters, spring waters and non-atypical natural mineral waters.*



€ 251 excl. VAT - total amount for 2 tests (excluding transport costs)

53 participants in 2024 - EXPERIENCE > 20 YEARS



**Need to test another method, evaluate your staff?**

Order **additional test samples** (parcel in its entirety): € 65 excl. VAT (excluding transport costs)

#### 2 SHIPMENTS AVAILABLE / YEAR - REFRIGERATED PARCEL

Month	1	2	3	4	5	6	7	8	9	10	11	12
Test Matrix		25M50.1 Clean water							25M50.2 Clean water			

#### Parameters to analyse for each shipment

Br<sup>-</sup>, ClO<sub>4</sub><sup>-</sup>

BrO<sub>3</sub><sup>-</sup>, ClO<sub>2</sub><sup>-</sup>, ClO<sub>3</sub><sup>-</sup>



## PROGRAMME 91: ODOUR AND FLAVOUR IN WATERS INTENDED FOR HUMAN CONSUMPTION

*The materials are suitable for the check of analyses in public drinking waters, spring waters and non-atypical natural mineral waters.*



**€ 198 excl. VAT** - total amount for 2 tests (excluding transport costs)

**20 participants** in 2024 – EXPERIENCE: 10 YEARS



**Need to test another method, evaluate your staff?**

Order **additional test samples** (parcel in its entirety): **€ 50 excl. VAT** (excluding transport costs)

2 SHIPMENTS AVAILABLE / YEAR - REFRIGERATED PARCEL												
Month	1	2	3	4	5	6	7	8	9	10	11	12
Test Matrix				<b>25M91.1</b> Clean water					<b>25M91.2</b> Clean water			

<b>Parameters to analyse for each shipment</b>
Threshold Odour Number - TON
Threshold Flavour Number - TFN

<b>PARTICULARITIES</b>
<p>Threshold odour number (TON) and threshold flavour number (TFN) by the complete method by paired comparison with non-forced choice according to NF EN 1622 standard.</p> <p>Panel of 5 assessors maximum for each test.</p>

## PROGRAMME 90: CHEMICAL ANALYSES IN SPARKLING WATERS

*Carbogaseous waters: CO<sub>2</sub> > 250 mg/L*



€ 140 excl. VAT - total amount for 1 test (excluding transport costs)

39 participants in 204 – EXPERIENCE: 10 YEARS



**Need to test another method, evaluate your staff?**

Order **additional test samples** (parcel in its entirety): € 70 excl. VAT (excluding transport costs)

### 1 SHIPMENT / YEAR - REFRIGERATED PARCEL

Month	1	2	3	4	5	6	7	8	9	10	11	12
Test Matrix						<b>25M90.1</b> Carbogaseous water						

#### Parameters to analyse

turbidity, HCO<sub>3</sub><sup>-</sup>, conductivity, pH, total alkalinity

F<sup>-</sup>, NH<sub>4</sub><sup>+</sup>, NO<sub>2</sub><sup>-</sup>, NO<sub>3</sub><sup>-</sup>, Br<sup>-</sup>

Ca<sup>2+</sup>, Cl<sup>-</sup>, K<sup>+</sup>, Mg<sup>2+</sup>, Na<sup>+</sup>, SO<sub>4</sub><sup>2-</sup>, dissolved silica, degree of hardness

total organic carbon (TOC), PO<sub>4</sub><sup>3-</sup>

### PARTICULARITIES



#### Other recommended proficiency test:

- ↗ Programme 90B 'Dissolved CO<sub>2</sub> in sparkling waters'
- ↗ Programme 93 'Dry residue in atypical natural mineral waters'
- ↗ Programme 3E 'Metals in sparkling waters'

## PROGRAMME 90A:

### CHEMICAL ANALYSES IN HIGHLY MINERALISED MINERAL WATERS

Highly mineralised waters: still mineral waters with dry residue content at 180°C > 1500 mg/L



€ 148 excl. VAT - total amount for 1 test (excluding transport costs)

29 participants in 2024 - EXPERIENCE: 5 YEARS



**Need to test another method, evaluate your staff?**

Order **additional test samples** (parcel in its entirety): € 75 excl. VAT (excluding transport costs)

#### 1 SHIPMENT / YEAR - REFRIGERATED PARCEL

Month	1	2	3	4	5	6	7	8	9	10	11	12
Test									25M90A.1			
Matrix									Highly mineralised mineral waters			

#### Parameters to analyse

conductivity, HCO<sub>3</sub><sup>-</sup>, pH, total alkalinity, turbidity

Br<sup>-</sup>, F<sup>-</sup>, NH<sub>4</sub><sup>+</sup>, NO<sub>2</sub><sup>-</sup>, NO<sub>3</sub><sup>-</sup>

Ca<sup>2+</sup>, Cl<sup>-</sup>, K<sup>+</sup>, Mg<sup>2+</sup>, Na<sup>+</sup>, PO<sub>4</sub><sup>3-</sup>, SO<sub>4</sub><sup>2-</sup>, dissolved silica, degree of hardness, total organic carbon (TOC)

#### PARTICULARITIES



#### Other recommended proficiency test:

- ↪ Programme 93 'Dry residue in atypical natural mineral waters'
- ↪ Programme 3F 'Metals in highly mineralised mineral waters'

## PROGRAMME 90B: DISSOLVED CO<sub>2</sub> IN SPARKLING WATERS

*Carbogaseous waters: CO<sub>2</sub> > 250 mg/L*



€ 104 excl. VAT - total amount for 1 test (excluding transport costs)

15 participants in 2024 – EXPERIENCE: 10 YEARS



**Need to test another method, evaluate your staff?**

Order **additional test samples** (parcel in its entirety): € 55 excl. VAT (excluding transport costs)

### 1 SHIPMENT / YEAR - REFRIGERATED PARCEL

Month	1	2	3	4	5	6	7	8	9	10	11	12
Test						25M90B.1						
Matrix						Carbogaseous water						

### Parameters to analyse

Dissolved CO<sub>2</sub>

### PARTICULARITIES



#### Other recommended proficiency test:

- ↪ Programme 90 'Chemical analyses in sparkling waters'
- ↪ Programme 93 'Dry residue in atypical natural mineral waters'
- ↪ Le programme 3E 'Metals in sparkling waters'

## PROGRAMME 93: DRY RESIDUE IN ATYPICAL NATURAL MINERAL WATERS

*Atypical natural mineral waters: still mineral waters with dry residue content at 180°C > 1500 mg/L  
or carbogaseous waters with CO<sub>2</sub> > 250 mg/L*



€ 79 excl. VAT - total amount for 2 tests (excluding transport costs)

9 participants in 2024 - EXPERIENCE: 4 YEARS



**Need to test another method, evaluate your staff?**


Order **additional test samples** (parcel in its entirety): € 20 excl. VAT (excluding transport costs)

2 SHIPMENTS AVAILABLE / YEAR - REFRIGERATED PARCEL												
Month	1	2	3	4	5	6	7	8	9	10	11	12
Test		25M93.1				25M93.2						
Matrix		carbogaseous water				highly mineralised mineral water						

<b>Parameters to analyse for each shipment</b>
Dry residue at 180°C

**PARTICULARITIES**

**Other recommended proficiency test:**



- ↻ Programme 90 'Chemical parameters in sparkling waters'
- ↻ Programme 90B 'Dissolved CO<sub>2</sub> in sparkling waters'
- ↻ Programme 3E 'Metals in sparkling waters'
  
- ↻ Programme 90A 'Chemical parameters in highly mineralised mineral waters'
- ↻ Programme 3F 'Metals in highly mineralised mineral waters'

**PROGRAMME 1H:  
FIELD PARAMETERS AND INDICATORS IN SWIMMING POOL WATERS**



€ 261 excl. VAT - total amount for 2 tests (excluding transport costs)

77 participants in 2024 – EXPERIENCE: 5 YEARS




**Need to test another method, evaluate your staff?**

Order **additional test samples** (parcel in its entirety): € 70 excl. VAT (excluding transport costs)

2 SHIPMENTS AVAILABLE / YEAR - REFRIGERATED PARCEL												
Month	1	2	3	4	5	6	7	8	9	10	11	12
Test				<b>25M1H.1</b>					<b>25M1H.2</b>			
Matrix				Swimming pool water					Swimming pool water			

<b>Parameters to analyse for each shipment</b>
isocyanuric acid, free chlorine (or available chlorine), total chlorine, Cl <sup>-</sup> , pH
Total organic carbon (TOC), permanganate index

<b>PARTICULARITIES</b>
 <p><b>Other recommended proficiency test:</b>  <span style="color: red;">➔ Programme 50A 'Disinfection by-products in swimming pool waters'</span></p>

## PROGRAMME 50A: DISINFECTION BY-PRODUCTS IN SWIMMING POOL WATERS



€ 155 excl. VAT - total amount for 1 test (excluding transport costs)

46 participants in 2024 - EXPERIENCE > 5 YEARS




**Need to test another method, evaluate your staff?**

Order **additional test samples** (parcel in its entirety): € 80 excl. VAT (excluding transport costs)

1 SHIPMENT / YEAR - REFRIGERATED PARCEL												
Month	1	2	3	4	5	6	7	8	9	10	11	12
Test					<b>25M50A.1</b>							
Matrix					Swimming pool water							

Parameters to analyse
Br <sup>-</sup> , BrO <sub>3</sub> <sup>-</sup>
ClO <sub>2</sub> <sup>-</sup> , ClO <sub>3</sub> <sup>-</sup>

**PARTICULARITIES**



**Other recommended proficiency test:**  
 ↪ **Programme 1H** 'Field parameters and indicators in swimming pool waters'



## PROGRAMME 6: CHEMICAL ANALYSES IN SALINE WATERS



€ 688 excl. VAT - total amount for 2 tests (excluding transport costs)

34 participants in 2024 – EXPERIENCE > 25 YEARS



**Need to test another method, evaluate your staff?**

Order **additional test samples** (parcel in its entirety): € 175 excl. VAT (excluding transport costs)

### 2 SHIPMENTS AVAILABLE / YEAR - REFRIGERATED PARCEL

Month	1	2	3	4	5	6	7	8	9	10	11	12
Test						<b>25M6.1</b>			<b>25M6.2</b>			
Matrix						Saline and brackish water			Saline and brackish water			

#### Parameters to analyse for each shipment

NH<sub>4</sub><sup>+</sup>, NO<sub>2</sub><sup>-</sup>, NO<sub>3</sub><sup>-</sup>, PO<sub>4</sub><sup>3-</sup>, dissolved silica, Total-P

pH, salinity, total organic carbon (TOC)

total suspended solids (TSS)

turbidity

### PARTICULARITIES



#### Other recommended proficiency test:

- ↪ Programme 6A 'Dissolved oxygen in saline waters'
- ↪ Programme 7 'Metals in saline waters'

**PROGRAMME 6A:  
DISSOLVED OXYGEN IN SALINE WATERS**



€ 125 excl. VAT - total amount for 1 test (excluding transport costs)

17 participants in 2024 - EXPERIENCE: 2 YEARS



**Need to test another method, evaluate your staff?**

Order **additional test samples** (parcel in its entirety): € 65 excl. VAT (excluding transport costs)

**1 SHIPMENT AVAILABLE / YEAR - REFRIGERATED PARCEL**

Month	1	2	3	4	5	6	7	8	9	10	11	12
Test									<b>25M6A.1</b>			
Matrix									<b>Saline and brackish water</b>			

**Parameters to analyse**

Dissolved O<sub>2</sub>

**PARTICULARITIES**



**Other recommended proficiency test:**

- ↪ Programme 6 'Chemical analyses in saline waters'
- ↪ Programme 7 'Metals in saline waters'

## PROGRAMME 2A: CHEMICAL ANALYSES IN WASTE WATERS



€ 218 excl. VAT - total amount for 2 tests (excluding transport costs)

139 participants in 2024 – EXPERIENCE: 30 YEARS



**Need to test another method, evaluate your staff?**

Order **additional test samples** (parcel in its entirety): € 55 excl. VAT (excluding transport costs)

### 2 SHIPMENTS AVAILABLE / YEAR - REFRIGERATED PARCEL

Month	1	2	3	4	5	6	7	8	9	10	11	12
Test			<b>25M2A.1</b>						<b>25M2A.2</b>			
Matrix			Waste water						Waste water			

### Parameters to analyse for each shipment

Dissolved salts, F<sup>-</sup>, conductivity, pH, soluble silicates,  
total silica (Si)

Dissolved calcium (Ca<sup>2+</sup>), total calcium (Ca), Cl<sup>-</sup>, K<sup>+</sup>, dissolved magnesium (Mg<sup>2+</sup>), total magnesium (Mg), Na<sup>+</sup>, SO<sub>4</sub><sup>2-</sup>,  
total alkalinity

PO<sub>4</sub><sup>3-</sup>

### PARTICULARITIES

Dissolved salts: evaluation of the quantity of dissolved matters from the measurement of the theoretical electrical conductivity according to NF T90-111 or any other equivalent standard; the results have to be reported in µS/cm.

Total silica (Si), total calcium (Ca), total magnesium (Mg): dissolved and particulate forms have to be taken into account.

## PROGRAMME 2B: INDICATORS IN WASTE WATERS



€ 278 excl. VAT - total amount for 2 tests (excluding transport costs)

216 participants in 2024 – EXPERIENCE: 30 YEARS



**Need to test another method, evaluate your staff?**

Order **additional test samples** (parcel in its entirety): € 70 excl. VAT (excluding transport costs)

### 2 SHIPMENTS / YEAR - REFRIGERATED PARCEL

Month	1	2	3	4	5	6	7	8	9	10	11	12
Test Matrix			<b>25M2B.1</b> Waste water						<b>25M2B.2</b> Waste water			

### Parameters to analyse for each shipment

Br<sup>-</sup>, NH<sub>4</sub><sup>+</sup>, NO<sub>2</sub><sup>-</sup>, NO<sub>3</sub><sup>-</sup>, conductivity, pH

DOC, total organic carbon (TOC),  
Total Kjeldahl Nitrogen (TKN),  
Total bound nitrogen (TN<sub>b</sub> measured), Total-P

total suspended solids (TSS)

Chemical Oxygen Demand,  
Chemical Oxygen Demand (Sealed Tube method), Cl<sup>-</sup>

BOD<sub>5</sub>

### PARTICULARITIES



#### Other recommended proficiency tests:

- ↪ Programme 2C 'Indicators in waste waters at low concentration levels'
- ↪ Programme 2F 'ST-COD at low contents in waste waters'

**PROGRAMME 2C:  
INDICATORS IN WASTE WATERS AT LOW CONCENTRATION LEVELS**



€ 151 excl. VAT - total amount for 1 test (excluding transport costs)

123 participants in 2024 – EXPERIENCE: 30 YEARS



**Need to test another method, evaluate your staff?**

Order **additional test samples** (parcel in its entirety): € 80 excl. VAT (excluding transport costs)

**1 SHIPMENT / YEAR - REFRIGERATED PARCEL**

Month	1	2	3	4	5	6	7	8	9	10	11	12
Test												<b>25M2C.1</b>
Matrix												<b>Waste water</b>

**Parameters to analyse**

Br<sup>-</sup>, NH<sub>4</sub><sup>+</sup>, NO<sub>2</sub><sup>-</sup>, NO<sub>3</sub><sup>-</sup>, conductivity, pH

DOC, total organic carbon (TOC),  
Total Kjeldahl Nitrogen (TKN),  
Total bound nitrogen (TN<sub>b</sub> measured), Total-P

total suspended solids (TSS)

Chemical Oxygen Demand,  
Chemical Oxygen Demand (Sealed Tube method), Cl<sup>-</sup>

BOD<sub>5</sub>

**PARTICULARITIES**



**Other recommended proficiency tests:**

👉 **Programme 2F 'ST-COD at low contents in waste waters'**

## PROGRAMME 2D: FIELD PARAMETERS IN WASTE WATERS



€ 94 excl. VAT - total amount for 2 tests (excluding transport costs)

114 participants in 2024 - EXPERIENCE > 5 YEARS



**Need to test another method, evaluate your staff?**

Order **additional test samples** (parcel in its entirety): € 25 excl. VAT (excluding transport costs)

### 2 SHIPMENTS AVAILABLE / YEAR - REFRIGERATED PARCEL

Month	1	2	3	4	5	6	7	8	9	10	11	12
Test Matrix		<b>25M2D.1</b> Waste water								<b>25M2D.2</b> Waste water		

### Parameters to analyse for each shipment

pH, conductivity, turbidity, REDOX potential,  
true colour by comparison with hexachloroplatinate

### PARTICULARITIES

True colour analysed by spectrophotometry according to method C of the NF EN ISO 7887 standard. The determination of the true colour according to the method D of the NF EN ISO 7887 standard can be carried out.



#### Other recommended proficiency tests:

↳ **Programmes 101** 'Sampling using automatic samplers in treatment plant' in several regions of Metropolitan France to evaluate the quality of your on-site sampling (conducted in French only)

## PROGRAMME 2F: ST-COD AT LOW CONTENTS IN WASTE WATERS



€ 98 excl. VAT - total amount for 1 test (excluding transport costs)

69 participants in 2024 – EXPERIENCE: 3 YEARS



**Need to test another method, evaluate your staff?**

Order **additional test samples** (parcel in its entirety): € 50 excl. VAT (excluding transport costs)

### 1 SHIPMENT / YEAR - REFRIGERATED PARCEL

Month	1	2	3	4	5	6	7	8	9	10	11	12
Test					<b>25M2F.1</b>							
Matrix					Waste water							

### Parameters to analyse

Cl<sup>-</sup>, Chemical Oxygen Demand (Sealed Tube method)

### PARTICULARITIES

In the frame of this proficiency test, ST-COD contents will be low and between 10 mg of O<sub>2</sub>/L and 30 mg of O<sub>2</sub>/L.

Test samples may contain high chloride contents, which will nevertheless be representative of the levels found in routine waste waters.



## PROGRAMME 2G: DRY RESIDUE IN WASTE WATERS



€ 79 excl. VAT - total amount for 2 tests (excluding transport costs)

19 participants in 2024 – EXPERIENCE: 1 YEAR



**Need to test another method, evaluate your staff?**

Order **additional test samples** (parcel in its entirety): € 20 excl. VAT (excluding transport costs)

### 2 SHIPMENTS AVAILABLE / YEAR - REFRIGERATED PARCEL

Month	1	2	3	4	5	6	7	8	9	10	11	12
Test			<b>25M2G.1</b>							<b>25M2G.2</b>		
Matrix			<b>Waste water</b>							<b>Waste water</b>		

### Parameters to analyse for each shipment

Dry residue at 105°C without filtration  
Dry residue at 180°C without filtration

### PARTICULARITIES

The dry residue measurement at 105°C and /or at 180°C will have to be carried out without prior filtration of the sample.