

AGLAE 2025

PROFICIENCY TESTING SCHEME CATALOGUE

SOLID MATRICES



AGLAE Association

Parc des Pyramides
427 rue des Bourreliers
59320 Hallennes lez Haubourdin
France

☎ +33 (0)3 20 16 91 40

www.association-aglae.fr

contact@association-aglae.fr

PTS – Solid matrices

9	Chemical analyses and metals in sediments
10	Organic micropollutants in sediments
40	Chemical analyses and metals in recoverable sewage sludges
41	Organic micropollutants in recoverable sewage sludges
43	Chemical analyses and metals in contaminated sites and soils
44	Organic micropollutants in contaminated sites and soils
46	Volatile Organic Compounds in solid matrices
47	Grain size distribution in solid matrices
51	Chemical analyses and metals in waste (leaching)
51A	Cyanides and phenol index in waste (leaching)
51C	PAHs in bituminous waste
120	Solid Fuel Products

Glossary of the matrices used

Name of the matrix for solid matrices	Below the matrices that can be used, alone or mixed, to comply with the representativity of the specified matrix					
	marine, river or port sediments	sludges from WWTP, industrial, sewage	soils or industrial contaminated sites	ashes	clinkers	residues from industries or human activity
Sediments	x					
Sludges		x				
Soils			x			
Wastes		x	x	x	x	x

Participate in AGLAE's External Quality Control



A WAY OF WORKING THAT PROVIDES YOU WITH THE HIGHEST STANDARD OF RESULTS WITH CONFIDENTIALITY AND IMPARTIALITY

Each step of the way, AGLAE is there supporting you.

REGISTRATIONS FOR PROFICIENCY TESTING ARE DONE KNOWING THE WHOLE PROCESS, WITH A DETAILED AND RIGOUROUS SCHEDULE

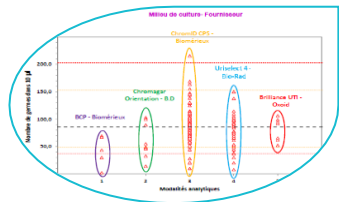


- ✓ The number of evaluations per year for each parameter is specified in the catalogue, concentration levels and stabilisation are available on request.
- ✓ AGLAE uses "express" shipments for your samples and makes sure of their distribution to your laboratory.
- ✓ A sufficient delay to analyse and the report the results.
- ✓ Via your member area, **enter your results and find instructions, assigned codes, reports, summaries of your results, certificate of participation...**

THE OPTIMISATION OF RISK MANAGEMENT FOR YOUR LABORATORY



- You have a better visibility of potential anomalies through:
- ✓ An appropriate test design (duplicate samples, repeated measurements),
 - ✓ A large number of participants: around 200 laboratories in the field of 'base' microbiology and 'base' physico-chemical analyses.



- AGLAE's detailed study:
- ✓ Influence of the analytical methods, manufacturers (equipment and consumables)... factors that we study to help you improve the quality of your analyses,
 - ✓ For waters intended for medical use and water microbiology, estimation of your own uncertainties in microbiology,
 - ✓ Check of your uncertainty estimates in chemistry (zeta-score),
 - ✓ A report validated by experts of the field and personalised for most tests.

ATTRACTIVE DISCOUNTS, PAYMENT CONDITIONS MADE EASIER

- Choose among the various programmes and benefit from discounts up to 15%,
- A possible payment in 2 or 3 folds depending on the amount your participation.
- Payment possible by cheque (in €), bank transfer, credit card on <https://www.helloasso.com/associations/a-g-l-a-e/paiements/aglae>

Amount of your invoice (excluding transport cost)	Discount
3000 ≤ Amount < 6000 € excl. VAT	5%
6000 ≤ Amount < 9000 € excl. VAT	10%
Amount ≥ 9000 € excl. VAT	15%

Additional services



ADDITIONAL TEST SAMPLES TO TEST ANOTHER METHOD, EVALUATE A TECHNICIAN

- ✓ Test samples available for almost all the tests at half price.
- ✓ Besides your usual distribution, you receive one (or several) additional parcel(s).
- ✓ The results of these samples are not statistically processed by AGLAE but for most tests you get a sheet **in your results file** where to **calculate your z-score**. Note that this sheet can also be used in case of unit error, incorrect results' report, etc.

⇒ Check the **list of samples and their price on your Member Area** (Downloads / Catalogues) and contact us to receive a quote. These additional samples need to be ordered after you registration for the test and up to 2 weeks before the shipment.



QUALITY CONTROL MATERIALS FOR YOUR MONITORING AND IMPROVEMENT OF YOUR ANALYTICAL PERFORMANCE

- ✓ Materials coming from the **solid matrices tests: sediments, sludge, polluted sites and soils**.
- ✓ Purchased at any time during the year and delivered with a certificate presenting the precision values obtained during the test (assigned value and uncertainties).

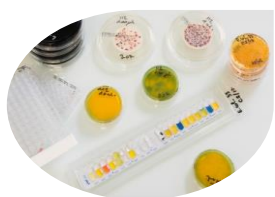
⇒ Check the **list of materials, prices and available quantities on your Member Area** (Downloads / Catalogues) and contact us to receive a quote.



TRAINING SESSIONS IN MICROBIOLOGY: ONE TOPIC POSSIBLY PROVIDED IN ENGLISH

Two-day on-line session to become operational for:

- ✓ Characterising a microbiological method according to ISO 13843 in order to validate it
- ⇒ *Should you be interested in such a session, please get back to us.*



CUSTOMIZED SERVICE: 'PERFORMANCE CHARACTERISTICS OF MICROBIOLOGICAL METHODS'

Do you need to characterise specific methods?

AGLAE can provide you support to establish methods performance characteristics, in conformity with ISO 13843*. Benefit from AGLAE's technical and statistical experience to validate your microbiological method.

* *Water quality — Requirements for establishing performance characteristics of quantitative microbiological methods*

⇒ *Should you have such needs, contact us to study your request together and issue a quote.*



SUMMARY OF YOUR RESULTS FOR WATER MICROBIOLOGY AND WATER FOR MEDICAL USE TESTS

Gather at any time your results and performance: for a selected period, your results are grouped in an Excel file; this is a tool to support you in your Internal Quality Control, your audits...

Programmes' description

One programme includes from 1 to 4 proficiency tests (= rounds).

Prices specified in the catalogue are for the complete programme, which corresponds to several rounds most of the time.

When purchasing a complete programme, the price per test is lower.

Content

For each programme's description, you will find the technical content of the test : volumes, parameters, matrices, dispatch month...

The concentration levels and stabilisation modalities of the samples are available on request.

The samples' dispatch months are given for information only.

Transport costs depend on the destination and tests selected within the programmes; contact us to get a quote.

Our aim is to prepare materials as close as possible to the samples analysed in routine: the contamination levels can therefore be very low or very high.

➔ **Our concentration levels are available on request.**

Caption



This logo shows that the programme is accredited by LABORATORIES section in compliance with ISO/IEC 17043.

PROGRAMME 9: CHEMICAL ANALYSES AND METALS IN SEDIMENTS



€ 354 excl. VAT - total amount for 2 tests (excluding transport costs)

48 participants in 2024 – EXPERIENCE > 25 YEARS



Quality Control Materials coming from proficiency tests available
€ 20 excl. VAT per bottle (excluding transport costs)
 These materials are available once the test report is issued.

2 SHIPMENTS AVAILABLE / YEAR

Month	1	2	3	4	5	6	7	8	9	10	11	12
Test	25M9.1						25M9.2					
Matrix	Sediment						Sediment					

Parameters to analyse for each shipment

total organic carbon (TOC), Ag, Al, As, B, Ba, Be, Ca, Cd, Co, Cr, Cu, Fe, Hg, K, Li, Mn, Mg, Mo, Na, Ni, Pb, pH, Sb, Se, Sn, Ti, Tl, Total Kjeldahl Nitrogen (TKN), Total-P, U, V, Zn, total-C, total-N, dry matter, loss on ignition at 550°C

PARTICULARITIES



The number of participants for the proficiency tests in solid matrices is limited. Registrations are possible within the limits of available samples. Register quickly.

Please note that laboratories that carry out so-called 'total dissolution' may not be evaluated due to a lack of a sufficient number of results in the event of a proven difference between methods. In this case, comments on the participants' performance will be provided in the report.



Other recommended proficiency test:

↳ **Programme 47** 'Grain size distribution in solid matrices'

PROGRAMME 10: ORGANIC MICROPOLLUTANTS IN SEDIMENTS



€ 553 excl. VAT - total amount for 2 tests (excluding transport costs)

34 participants in 2024 – EXPERIENCE > 25 YEARS



Quality Control Materials coming from proficiency tests available
€ 20 excl. VAT per bottle (excluding transport costs)
 These materials are available once the test report is issued.

2 SHIPMENTS AVAILABLE / YEAR

Month	1	2	3	4	5	6	7	8	9	10	11	12
Test			25M10.1				25M10.2					
Matrix			Sediment				Sediment					

Parameters to analyse for each shipment

PCBs: PCB 28, PCB 52, PCB 101, PCB 118, PCB 138, PCB 153, PCB 180

Organochlorines: aldrin, dieldrin, heptachlor, heptachlorepoxyde (total), lindane

Organophosphorus: diazinon

PAHs: acenaphtene, acenaphtylene, anthracene, benzo[a]anthracene, benzo[a]pyrene, benzo[b]fluoranthene, benzo[g,h,i]perylene, benzo[k]fluoranthene, chrysene, dibenzo[a,h]anthracene, fluoranthene, fluorene, indeno[1,2,3 - cd]pyrene, 2-methylfluoranthene, 2-methylnaphtalene, naphtalene, phenanthrene, pyrene,

Total hydrocarbons index - C10-C40 range

Organotin compounds: monobutyltin cation, dibutyltin cation, tributyltin cation, tetrabutyltin, triphenyltin cation

PARTICULARITIES



The number of participants for the proficiency tests in solid matrices is limited. Registrations are possible within the limits of available samples. Register quickly.

Total hydrocarbons index - C10-C40 range: sum of the concentrations of compounds extractable with a hydrocarbon solvent, boiling point between 36 °C and 69 °C, not adsorbed on Florisil and which may be chromatographed by GC-FID, with retention times between those of n-decane (C10H22) and n-tetracontane (C40H82).



Other recommended proficiency test:

↳ **Programme 46** 'Volatile Organic Compounds in solid matrices'

PROGRAMME 40:

CHEMICAL ANALYSES AND METALS IN RECOVERABLE SEWAGE SLUDGES



€ 512 excl. VAT - total amount for 2 tests (excluding transport costs)

49 participants in 2024 - EXPERIENCE > 25 YEARS



Quality Control Materials coming from proficiency tests available for pretreated materials only.

€ 20 excl. VAT per bottle (excluding transport costs).

These materials are available once the test report is issued.

2 SHIPMENTS AVAILABLE / YEAR

Month	1	2	3	4	5	6	7	8	9	10	11	12
Test				25M40.1						25M40.2		
Matrix				Pretreated sludge						Raw sludge		

Parameters to analyse

Pretreated sludge

total organic carbon (TOC), Ag, Al, As, B, Ba, Ca, Cd, Co, Cr, Cu, Fe, Hg, K, Mg, Mn, Mo, Na, Ni, Pb, Sb, Se, Sn, Sum (Cr + Cu + Ni + Zn), Total Kjeldahl Nitrogen (TKN), total-C, total-N, Total-P, Total-S, Ti, V, Zn, dry matter, loss on ignition at 550°C, pH

Raw sludge

total organic carbon (TOC), Al, As, B, Ba, Ca, Cd, Co, Cr, Cu, Fe, Hg, K, Mg, Mn, Mo, Na, Ni, Pb, Sb, Se, Sn, Sum (Cr + Cu + Ni + Zn), Total Kjeldahl Nitrogen (TKN), total-C, total-N, Total-P, Total-S, Zn, dry matter, loss on ignition at 550°C, pH

PARTICULARITIES

LIMITED QUANTITY

The number of participants for the proficiency tests in solid matrices is limited. Registrations are possible within the limits of available samples. Register quickly.

A.G.L.A.E. provides proficiency tests on the one hand on **raw materials** (to include the part of measurement uncertainty due to the pretreatment phase like in your routine analyses) and on the other hand on **pretreated materials** (to guarantee the presence of all the parameters to analyse and carry out enhanced monitoring on the analytical part of the analysis, predominant source of uncertainty).

- ✓ **Pretreated material:** material dried, crushed and sieved.
- ✓ **Raw material:** material dried, lightly crushed but not sieved. If we are not able to guarantee the presence of all the parameters listed, an evaluation of your results will still be carried out (check of false positives).

PROGRAMME 41:

ORGANIC MICROPOLLUTANTS IN RECOVERABLE SEWAGE SLUDGES



€ 577 excl. VAT - total amount for 2 tests (excluding transport costs)

27 participants in 2024 - EXPERIENCE > 25 YEARS



Quality Control Materials coming from proficiency tests available for pretreated materials only.

€ 20 excl. VAT per bottle (excluding transport costs).

These materials are available once the test report is issued.

2 SHIPMENTS AVAILABLE / YEAR

Month	1	2	3	4	5	6	7	8	9	10	11	12
Test				25M41.1						25M41.2		
Matrix				Pretreated sludge						Raw sludge		

Parameters to analyse for each shipment

Dry matter

PAHs: acenaphthene, acenaphthylene, anthracene, benzo[a]anthracene, benzo[a]pyrene, benzo[b]fluoranthene, benzo[g,h,i]perylene, benzo[k]fluoranthene, chrysene, dibenzo[a,h]anthracene, fluoranthene, fluorene, indeno[1,2,3 - cd]pyrene, naphthalene, phenanthrene, pyrene

PCBs: PCB 28, PCB 52, PCB 101, PCB 118, PCB 138, PCB 153, PCB 180, Sum of PCBs 28, 52, 101, 118, 138, 153, 180

PARTICULARITIES

LIMITED QUANTITY

The number of participants for the proficiency tests in solid matrices is limited. Registrations are possible within the limits of available samples. Register quickly.

A.G.L.A.E. provides proficiency tests on the one hand on raw materials (to include the part of measurement uncertainty due to the pretreatment phase like in your routine analyses) and on the other hand on pretreated materials (to guarantee the presence of all the parameters to analyse and carry out enhanced monitoring on the analytical part of the analysis, predominant source of uncertainty).

- ✓ **Pretreated material:** material dried, crushed and sieved.
- ✓ **Raw material:** material dried, lightly crushed but not sieved. If we are not able to guarantee the presence of all the parameters listed, an evaluation of your results will still be carried out (check of false positives).

PROGRAMME 43: CHEMICAL ANALYSES AND METALS IN CONTAMINATED SITES AND SOILS



€ 306 excl. VAT - total amount for 2 tests (excluding transport costs)

27 participants in 2024 - EXPERIENCE > 10 YEARS



Quality Control Materials coming from proficiency tests available for pretreated materials only.

€ 20 excl. VAT per bottle (excluding transport costs).

These materials are available once the test report is issued.

2 SHIPMENTS AVAILABLE / YEAR

Month	1	2	3	4	5	6	7	8	9	10	11	12
Test					25M43.1						25M43.2	
Matrix					Pretreated soil						Raw soil	

Parameters to analyse

Pretreated soil

total organic carbon (TOC), dry matter, Al, As, Ba, Ca, Cd, Co, Cr, Cu, Fe, Hg, K, Mg, Mn, Mo, Na, Ni, Pb, Total-P, Sb, Se, Sn, Zn

Raw soil

total organic carbon (TOC), dry matter, Al, As, Ca, Cd, Co, Cr, Cu, Fe, Hg, K, Mg, Mn, Na, Ni, Pb, Total-P, Se, Zn

PARTICULARITIES

LIMITED QUANTITY

The number of participants for the proficiency tests in solid matrices is limited. Registrations are possible within the limits of available samples. Register quickly.

Please note that laboratories that carry out so-called 'total dissolution' may not be evaluated due to a lack of a sufficient number of results in the event of a proven difference between methods. In this case, comments on the participants' performance will be provided in the report.

A.G.L.A.E. provides proficiency tests on the one hand on **raw materials** (to include the part of measurement uncertainty due to the pretreatment phase like in your routine analyses) and on the other hand on **pretreated materials** (to guarantee the presence of all the parameters to analyse and carry out enhanced monitoring on the analytical part of the analysis, predominant source of uncertainty).

- ✓ **Pretreated material:** material dried, crushed and sieved.
- ✓ **Raw material:** material dried, lightly crushed but not sieved. If we are not able to guarantee the presence of all the parameters listed, an evaluation of your results will still be carried out (check of false positives).



Other recommended proficiency test:

↳ Programme 47 'Grain size distribution in solid matrices'

PROGRAMME 44: ORGANIC MICROPOLLUTANTS IN CONTAMINATED SITES AND SOILS



€ 459 excl. VAT - total amount for 2 tests (excluding transport costs)

29 participants in 2024 - EXPERIENCE > 10 YEARS



Quality Control Materials coming from proficiency tests available for pretreated materials only.

€ 20 excl. VAT per bottle (excluding transport costs).

These materials are available once the test report is issued.

2 SHIPMENTS AVAILABLE / YEAR

Month	1	2	3	4	5	6	7	8	9	10	11	12
Test					25M44.1						25M44.2	
Matrix					Pretreated soil						Raw soil	

Parameters to analyse for each shipment

PAHs: acenaphtene, acenaphtylene, anthracene, benzo[a]anthracene, benzo[a]pyrene, benzo[b]fluoranthene, benzo[g,h,i]perylene, benzo[k]fluoranthene, chrysene, dibenzo[a,h]anthracene, fluoranthene, fluorene, indeno[1,2,3 - cd]pyrene, naphtalene, phenanthrene, pyrene

Total hydrocarbons index - C10-C40 range

PCBs: PCB 28, PCB 52, PCB 101, PCB 118, PCB 138, PCB 153, PCB 180

PARTICULARITIES



The number of participants for the proficiency tests in solid matrices is limited. Registrations are possible within the limits of available samples. Register quickly.

Total hydrocarbons index - C10-C40 range: sum of the concentrations of compounds extractable with a hydrocarbon solvent, boiling point between 36 °C and 69 °C, not adsorbed on Florisil and which may be chromatographed by GC-FID, with retention times between those of n-decane (C10H22) and n-tetracontane (C40H82).



Other recommended proficiency test:

↳ Programme 46 'Volatile Organic Compounds in solid matrices'

PARTICULARITIES (CONTINUED)

A.G.L.A.E. provides proficiency tests on the one hand on **raw materials** (to include the part of measurement uncertainty due to the pretreatment phase like in your routine analyses) and on the other hand on **pretreated materials** (to guarantee the presence of all the parameters to analyse and carry out enhanced monitoring on the analytical part of the analysis, predominant source of uncertainty).

- ✓ **Pretreated material:** material dried, crushed and sieved.
- ✓ **Raw material:** material dried, lightly crushed but not sieved. If we are not able to guarantee the presence of all the parameters listed, an evaluation of your results will still be carried out (check of false positives).

PROGRAMME 46: VOLATILE ORGANIC COMPOUNDS IN SOLID MATRICES



€ 271 excl. VAT - total amount for 1 test (excluding transport costs)

24 participants in 2024 - EXPERIENCE: 2 YEARS

1 SHIPMENT AVAILABLE / YEAR - REFRIGERATED PARCEL

Month	1	2	3	4	5	6	7	8	9	10	11	12
Test			25M46.1									
Matrix			Pretreated sediment									

Parameters to analyse

Dry matter
Benzene, toluene, ethylbenzene, xylene ortho,
xylene para + xylene meta, total xylenes

PARTICULARITIES

LIMITED QUANTITY

The number of participants for the proficiency tests in solid matrices is limited. Registrations are possible within the limits of available samples. Register quickly.



Other recommended proficiency tests:

- ↪ Programme 10 'Organic micropollutants in sediments'
- ↪ Programme 44 'Organic micropollutants in polluted sites and soils'

PROGRAMME 47: GRAIN SIZE DISTRIBUTION IN SOLID MATRICES



€ 214 excl. VAT - total amount for 2 tests (excluding transport costs)

25 participants in 2024 - EXPERIENCE > 20 YEARS



Quality Control Materials coming from proficiency tests available
€ 20 excl. VAT per bottle (excluding transport costs)
 These materials are available once the test report is issued.

2 SHIPMENTS AVAILABLE / YEAR

Month	1	2	3	4	5	6	7	8	9	10	11	12
Test	25M47.1						25M47.2					
Matrix	Sediment						Soil					

Parameters to analyse for each shipment

Grain size distribution^[1], dry matter

^[1] parameter not covered by accreditation (see general conditions of registration)

PARTICULARITIES

LIMITED QUANTITY

The number of participants for the proficiency tests in solid matrices is limited. Registrations are possible within the limits of available samples. Register quickly.

PROGRAMME 51: CHEMICAL ANALYSES AND METALS IN WASTE (LEACHING)

Wastes can be polluted soils, ashes, clinkers, residues from industrial activity, sludges from wastewater treatment plants.



€ 634 excl. VAT - total amount for 2 tests (excluding transport costs)

48 participants in 2024 - EXPERIENCE > 20 YEARS

2 SHIPMENTS AVAILABLE / YEAR

Month	1	2	3	4	5	6	7	8	9	10	11	12
Test						25M51.1			25M51.2			
Matrix						Waste			Waste			

Parameters to analyse

25M51.1

conductivity, dry matter,
dry residue at 105°C of the eluate, pH,
soluble fraction,
total organic carbon (TOC), unburned rate at 500°C
As, Cd, Cr, Cu, Ni, Pb, Zn, Cl⁻, F⁻, SO₄²⁻

25M51.2

conductivity, dry matter,
dry residue at 105°C of the eluate, pH,
soluble fraction,
total organic carbon (TOC), unburned rate at 500°C
As, Ba, Cd, Cr, Cu, Mo, Ni, Pb, Sb, Se, Zn, Cl⁻, F⁻, SO₄²⁻

PARTICULARITIES

Technical constraints linked to the supply of contaminated waste have forced us to modify the test design and the parameters provided (Cr⁺⁶ and Hg have been removed). If you have access to contaminated waste, please contact us at contact@association-aglae.fr.

LIMITED QUANTITY

The number of participants for the proficiency tests in solid matrices is limited. Registrations are possible within the limits of available samples.
Register quickly.

Leaching of the provided waste to be carried out with a ratio L/S=10 (L/kg) and contact duration of 24h.

PROGRAMME 51A: CYANIDES AND PHENOL INDEX IN WASTE (LEACHING)

Wastes can be polluted soils, polluted sands, ashes, clinkers, residues from industrial activity, sludges from wastewater treatment plants.



This programme meets in particular the requirements of the German regulation dealing with waste intended for landfill or recycling ('LAGA/DepV': 'Länder-Arbeitsgemeinschaft Abfall / Deponieverordnung').



€ 623 excl. VAT - total amount for 1 test (excluding transport costs)

28 participants in 2024 - EXPERIENCE > 5 YEARS

1 SHIPMENT / YEAR

Month	1	2	3	4	5	6	7	8	9	10	11	12
Test Matrix									25M51A.1 Waste			

Parameters to analyse

Easily liberatable cyanide, total cyanide, dry matter

Phenol index, dry matter

PARTICULARITIES



The number of participants for the proficiency tests in solid matrices is limited. Registrations are possible within the limits of available samples. Register quickly.

The unit to report the results is expressed per liter of eluate.

Leaching of the waste to be carried out with a ratio L/S=10 (L/kg) and contact duration of 24h.

PROGRAMME 51C: PAHS IN BITUMINOUS WASTE

268 € excl. VAT – total amount for 1 test (excluding transport costs)

31 participants in 2024 – EXPERIENCE: 3 YEARS

1 SHIPMENT / YEAR												
Month	1	2	3	4	5	6	7	8	9	10	11	12
Test								25M51C.1				
Matrix								Bituminous waste				

Parameters to analyse

Dry matter

PAHs: acenaphtene, acenaphtylene, anthracene, benzo[a]anthracene, benzo[a]pyrene, benzo[b]fluoranthene, benzo[g,h,i]perylene, benzo[k]fluoranthene, chrysene, dibenzo[a,h]anthracene, fluoranthene, fluorene, indeno[1,2,3 - cd]pyrene, naphtalene, phenanthrene, pyrene

Total hydrocarbons index C10-C21

Total hydrocarbons index C10-C40

PARTICULARITIES

LIMITED QUANTITY

The number of participants for the proficiency tests in solid matrices is limited. Registrations are possible within the limits of available samples. Register quickly.

Bituminous waste sieved at 500 µm.

This programme is provided one year out of two due to technical constraints linked to the supply of contaminated bituminous. It will be provided again in 2027 unless we manage to get this matrix.

If you have access to contaminated bituminous waste, please contact us at contact@association-aglae.fr.

**PROGRAMME 120:
SOLID FUEL PRODUCTS**

147 € excl. VAT – total amount for 1 test (excluding transport costs)

16 participants in 2022 – EXPERIENCE: 3 YEARS

1 SHIPMENT / YEAR

Month	1	2	3	4	5	6	7	8	9	10	11	12
Test							25M120.1					
Matrix							Solid fuel					

Parameters to analyse

GCV at constant volume, NCV at constant volume, Moisture content

PARTICULARITIES

LIMITED QUANTITY

The number of participants for the proficiency tests in solid matrices is limited. Registrations are possible within the limits of available samples. Register quickly.