

# AGLAE 2025

## PROFICIENCY TESTING SCHEME CATALOGUE

### SAMPLING AND IN SITU MEASUREMENTS



#### AGLAE Association

Parc des Pyramides  
427 rue des Bourreliers  
59320 Hallennes lez Haubourdin  
France

☎ +33 (0)3 20 16 91 40

[www.association-aglae.fr](http://www.association-aglae.fr)

[contact@association-aglae.fr](mailto:contact@association-aglae.fr)

## New in 2025 - Sampling and in situ measurements



### Extended accreditation

The '*in situ* measurements and sampling' proficiency tests provided by AGLAE are from now on accredited.

## List of PTS - Sampling and in situ measurements

<b>100A</b> <i>In situ</i> measurements and sampling in different types of waters - Nord
<b>100C</b> <i>In situ</i> measurements and sampling in different types of waters - Rhône
<b>100D</b> <i>In situ</i> measurements and sampling in different types of waters - Creuse
<b>101A</b> Sampling using automatic samplers in treatment plant - Nord
<b>101C</b> Sampling using automatic samplers in treatment plant - Rhône
<b>101D</b> Sampling using automatic samplers in treatment plant - Creuse
<b>102D</b> Flowmetry - Creuse

## Programmes' description

**One programme includes from 1 to 4 proficiency tests (= rounds).**

Prices specified in the catalogue are for the complete programme, which corresponds to several rounds most of the time.

When purchasing a complete programme, the price per test is lower.

## Caption



This logo shows that the programme is accredited by LABORATORIES section in compliance with ISO/IEC 17043.

## Participate in AGLAE's External Quality Control



A WAY OF WORKING THAT PROVIDES YOU WITH THE HIGHEST STANDARD OF RESULTS WITH CONFIDENTIALITY AND IMPARTIALITY

Each step of the way, AGLAE is there supporting you.

### REGISTRATIONS FOR PROFICIENCY TESTING ARE DONE KNOWING THE WHOLE PROCESS, WITH A DETAILED AND RIGOUROUS SCHEDULE

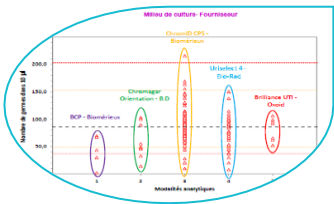


- ✓ The number of evaluations per year for each parameter is specified in the catalogue, concentration levels and stabilisation are available on request.
- ✓ AGLAE uses "express" shipments for your samples and makes sure of their distribution to your laboratory.
- ✓ A sufficient delay to analyse and the report the results.
- ✓ Via your member area, **enter your results and find instructions, assigned codes, reports, summaries of your results, certificate of participation...**

### THE OPTIMISATION OF RISK MANAGEMENT FOR YOUR LABORATORY



- You have a better visibility of potential anomalies through:
- ✓ An appropriate test design (duplicate samples, repeated measurements),
  - ✓ A large number of participants: around 200 laboratories in the field of 'base' microbiology and 'base' physico-chemical analyses.



- AGLAE's detailed study:
- ✓ Influence of the analytical methods, manufacturers (equipment and consumables)... factors that we study to help you improve the quality of your analyses,
  - ✓ For waters intended for medical use and water microbiology, estimation of your own uncertainties in microbiology,
  - ✓ Check of your uncertainty estimates in chemistry (zeta-score),
  - ✓ A report validated by experts of the field and personalised for most tests.

### ATTRACTIVE DISCOUNTS, PAYMENT CONDITIONS MADE EASIER

- Choose among the various programmes and benefit from discounts up to 15%,
- A possible payment in 2 or 3 folds depending on the amount your participation.
- Payment possible by cheque (in €), bank transfer, credit card on <https://www.helloasso.com/associations/a-g-l-a-e/paiements/aglae>

Amount of your invoice (excluding transport cost)	Discount
3000 ≤ Amount < 6000 € excl. VAT	<b>5%</b>
6000 ≤ Amount < 9000 € excl. VAT	<b>10%</b>
Amount ≥ 9000 € excl. VAT	<b>15%</b>

## Additional services



### ADDITIONAL TEST SAMPLES TO TEST ANOTHER METHOD, EVALUATE A TECHNICIAN

- ✓ Test samples available for almost all the tests at half price.
- ✓ Besides your usual distribution, you receive one (or several) additional parcel(s).
- ✓ The results of these samples are not statistically processed by AGLAE but for most tests you get a sheet **in your results file** where to **calculate your z-score**. Note that this sheet can also be used in case of unit error, incorrect results' report, etc.

⇒ Check the **list of samples and their price on your Member Area** (Downloads / Catalogues) and contact us to receive a quote. These additional samples need to be ordered after you registration for the test and up to 2 weeks before the shipment.



### QUALITY CONTROL MATERIALS FOR YOUR MONITORING AND IMPROVEMENT OF YOUR ANALYTICAL PERFORMANCE

- ✓ Materials coming from the **solid matrices tests: sediments, sludge, polluted sites and soils**.
- ✓ Purchased at any time during the year and delivered with a certificate presenting the precision values obtained during the test (assigned value and uncertainties).

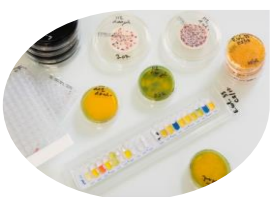
⇒ Check the **list of materials, prices and available quantities on your Member Area** (Downloads / Catalogues) and contact us to receive a quote.



### TRAINING SESSIONS IN MICROBIOLOGY: ONE TOPIC POSSIBLY PROVIDED IN ENGLISH

Two-day on-line session to become operational for:

- ✓ Characterising a microbiological method according to ISO 13843 in order to validate it
- ⇒ *Should you be interested in such a session, please get back to us.*



### CUSTOMIZED SERVICE: 'PERFORMANCE CHARACTERISTICS OF MICROBIOLOGICAL METHODS'

Do you need to characterise specific methods?

AGLAE can provide you support to establish methods performance characteristics, in conformity with ISO 13843\*. Benefit from AGLAE's technical and statistical experience to validate your microbiological method.

\* *Water quality — Requirements for establishing performance characteristics of quantitative microbiological methods*

⇒ *Should you have such needs, contact us to study your request together and issue a quote.*



### SUMMARY OF YOUR RESULTS FOR WATER MICROBIOLOGY AND WATER FOR MEDICAL USE TESTS

Gather at any time your results and performance: for a selected period, your results are grouped in an Excel file; this is a tool to support you in your Internal Quality Control, your audits...

## PROGRAMMES 100:

### IN SITU MEASUREMENTS AND SAMPLING IN DIFFERENT TYPES OF WATER



€ 849 excl. VAT – price for the report of one series of results

From 8 participants per interlaboratory comparison - EXPERIENCE: 8 YEARS

➤ **3 possible locations in France:**

- ✓ 25M100A.1 - Nord – May 2025
- ✓ 25M100C.1 - Rhône - June 2025
- ✓ 25M100D.1 - Creuse - October 2025



➤ **Possibility to combine the programmes:**

- ✓ 100A - 101A
- ✓ 100C - 101C
- ✓ 100D - 101D - 102D

➤ **In situ measurements:**

✓ **In several types of water:**

Bathing water, river water and swimming pool water

- ✓ **Parameters for bathing waters and river waters\*:** pH, conductivity at 25°C, dissolved oxygen, temperature, turbidity<sup>[1]</sup>, Secchi disc transparency<sup>[1]</sup>, REDOX potential<sup>[1]</sup>. Other parameters <sup>[1]</sup> may be provided depending on the locations.
- ✓ **Parameters for swimming pool waters:** pH, temperature, free chlorine, total chlorine and, only for test 25M100D.1, isocyanuric acid<sup>[1]</sup>.

➤ **Sampling of surface water and/or bathing water:**

- ✓ **Analyses by a third party: microbiological parameters\*** (intestinal enterococci, *E. coli*, ...) **and chemical\*** (suspended matters, nitrates, organic carbon, total phosphorus, total calcium, micropollutants potentially present...)

\* This list will be adapted according to the characteristics of the waters of the selected locations.

<sup>[1]</sup> Parameter not covered by accreditation (see general conditions of registration)

#### PARTICULARITIES

- ✓ Come with the usual sampling equipment
- ✓ Test conducted for a minimum of 8 participants per location, limited number of places
- ✓ Exact dates and addresses communicated at a later stage
- ✓ 25M100D.1 is carried out in partnership with OIEau for the choice of sites and access to structures.
- ✓ An overall evaluation of the sampling for physico-chemistry and microbiology will be carried out for each participant. The choice of physico-chemical sampling parameters integrate the analysis of the particulate phase and the dissolved phase.
- ✓ **Test documents of these Proficiency Testing Schemes are not translated into English.**
- ✓ Accommodation and meals to be taken care of by the participants
- ✓ A vehicle is necessary to commute from one spot to the next one

## PROGRAMMES 101: SAMPLING USING AUTOMATIC SAMPLERS IN TREATMENT PLANT

€ 849 excl. VAT - price for the report of one series of results



**From 8 participants** per interlaboratory comparison -  
EXPERIENCE 8 YEARS

- **3 possible locations in France:**
  - ✓ 25M101A.1 - Nord – May 2025
  - ✓ 25M101C.1 - Rhône – June 2025
  - ✓ 25M101D.1 - Creuse – October 2025
- **Possibility to combine the programmes:**
  - ✓ 101A - 100A
  - ✓ 101C - 100C
  - ✓ 101D - 102D - 100D

- **Measurements on reconstituted sample, on-site:**  
**Parameters\*:** pH, conductivity, dissolved oxygen, turbidity. Other parameters may be provided.
  - **In situ measurements:**  
**Parameter:** temperature
  - **Evaluation of the measurement of the total volume flowed over 24 hours**
  - **Sampling:**  
**Analyses by a third party: chemical parameters\*** (suspended matters, ST-COD, ammonium, Total Organic Carbon, micropollutants potentially present...).
- \* This list will be adapted according to the characteristics of the waste waters.*

### PARTICULARITIES

- ✓ Come with the usual sampling equipment
- ✓ Test conducted for a minimum of 8 participants. Limited number of places
- ✓ Exact dates and addresses communicated at a later stage
- ✓ 25M101D.1 is carried out in partnership with OIEau for the choice of sites and access to structures.
- ✓ **Test documents of these Proficiency Testing Schemes are not translated into English.**
- ✓ Accommodation and meals to be taken care of by the participants
- ✓ A vehicle is necessary to reach the locations

## PROGRAMME 102D: FLOWMETRY - CREUSE



€ 327 excl. VAT - price for the report of one series of results

From 8 participants per interlaboratory comparison - EXPERIENCE: 5 YEARS

➤ 25M102D.1 - La Souterraine (Creuse - France) - October 2025

- Several levels of flow on an open channel
- Total volume flowed over a defined period of time

### PARTICULARITIES

- ✓ Possibility to combine the programmes: 100D - 101D - 102D
- ✓ Come with the usual sampling equipment
- ✓ Test conducted for a minimum of 8 participants. Limited number of participants
- ✓ Exact dates and addresses communicated at a later stage
- ✓ This programme is carried out in partnership with OIEau
- ✓ **The test documents of these Proficiency Testing Schemes are not translated into English.**
- ✓ Accommodation and meals to be taken care of by the participants
- ✓ A vehicle is necessary to reach the location